

Total area: approx. 73.9 sq. metres (795.5 sq. feet)

This floor plan has been created by a third party and should be used as a general outline for guidance only. Any areas, measurements or distances quoted are approximate and any intending purchaser or lessee should satisfy themselves by inspection, searches, enquiries and/or full survey as to the correctness of each statement. We accept no responsibility or liability for any loss whatsoever that may arise as a result of this plan and the information contained within.

© @modephotouk | www.modephoto.co.uk
Plan produced using PlanUp.

St Winifreds



Directions

Contact
Lodge Barn Manor Road Lambourne End
Essex
RM4 1NA

E: info@stirlingestate.com

T: 07718 232857

stirlingestate.com



**2 Bed
Flat
located in**



18 St. Winifreds Close

Chigwell
IG7 5DU

£350,000
Leasehold



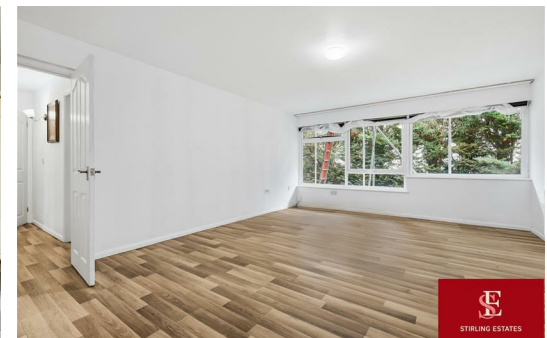
Some images have been virtually staged to help illustrate the potential of the property.

We asked residents of St. Winifreds Close what they love most about living here and these were the stand out answers:

- A safe, peaceful area with easy and comfortable night time commuting.
- Location is fantastic close to Grange Hill station and close to countryside and parks
- Green Space & Nature in the communal garden
- Friendly Neighbours & Community Feel

Welcome to Saint Winifreds Close, this chain free, two bedroom ground floor apartment is ready for a new owner to put their own stamp on it. The development is set well back from main roads, offering a peaceful and tranquil living environment and is easily accessed from Manor Road

The accommodation comprises a spacious master bedroom with access to a balcony overlooking well maintained communal gardens and mature trees, a second spacious separate bedroom, family bathroom, and an



Energy Efficiency Rating		Current	Potential
Very energy efficient - lower running costs			
(92 plus) A			
(81-91) B			
(69-80) C			
(55-68) D			
(39-54) E			
(21-38) F			
(1-20) G			
Not energy efficient - higher running costs			
		69	

England & Wales EU Directive 2002/91/EC

