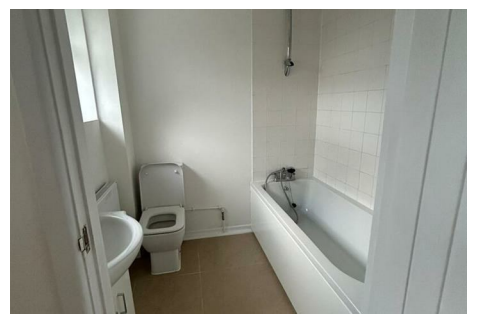
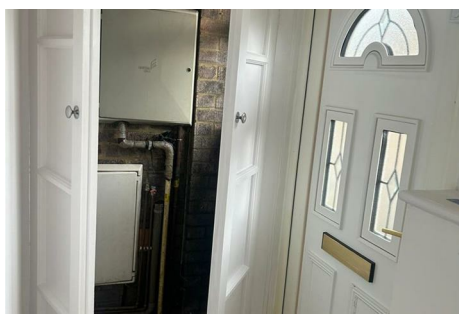




CHAFFERS
ESTATE AGENTS



50 Barnes Close
Sturminster Newton, DT10 1BN

£1,150 Per Month
Council Tax Band: B

50 Barnes Close

Sturminster Newton, DT10 1BN



Description

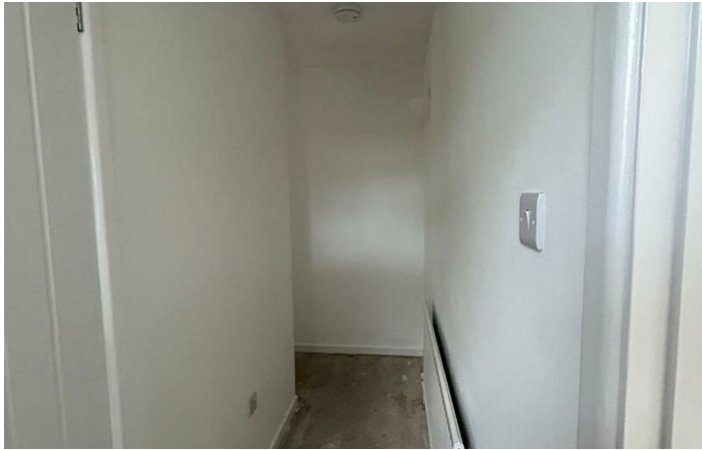
This well-presented two-bedroom semi-detached bungalow is situated in the residential area of Barnes Close, Sturminster Newton. The property offers comfortable and practical living throughout.

The bungalow features a modern fitted kitchen, a bathroom, and a small cloakroom conveniently located near the entrance. Both bedrooms are well-proportioned, making the property ideal for a couple or small family.

Outside, the property benefits from a small, easy-maintenance garden, perfect for low-upkeep outdoor space. A garage is also included, providing additional storage or parking.



Directions





Floor Plan: Not to scale ~ For identification purposes only.

These particulars, whilst believed to be accurate are set out as a general outline only for guidance and do not constitute any part of an offer or contract. Intending purchasers should not rely on them as statements of representation of fact, but must satisfy themselves by inspection or otherwise as to their accuracy. No person in this firms employment has the authority to make or give any representation or warranty in respect of the property.

48 High Street, Shaftesbury, Dorset, SP7 8AA
Tel: 01747 852301 Email: shaftesbury@chaffersstateagents.co.uk www.chaffersstateagents.co.uk

