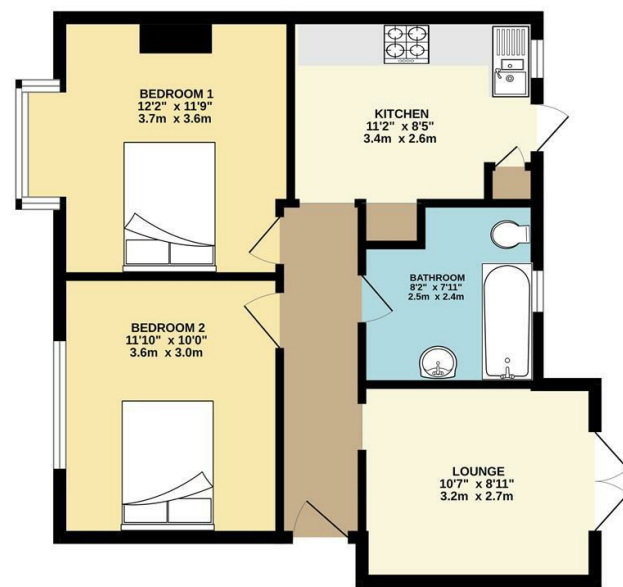




GROUND FLOOR
553 sq.ft. (51.4 sq.m.) approx.



TOTAL FLOOR AREA: 553 sq.ft. (51.4 sq.m.) approx.
While every attempt has been made to ensure the accuracy of the foregoing information, measurements of areas, volumes, etc. and any other data are approximate and are not intended to be used as a basis for any application or other purpose. This plan is for illustrative purposes only and should be used as such by any prospective purchaser. The agent, its agents and its employees do not warrant or guarantee the accuracy of the information and its reliability or efficiency can be given.
©2026



The Agent has not tested any apparatus, equipment, fixtures and fittings or services and so cannot verify that they are in working order or fit for the purpose. A buyer is advised to obtain verification from their solicitor or surveyor.
References to the tenure of a property are based on information supplied by the seller. The agent has not had the sight of the title documents. A buyer is advised to obtain verification from their solicitors.



Tufton Road, Chingford, E4 8LE

Asking Price £325,000 Leasehold

Bedrooms: 2 | Reception Rooms: 1 | Bathrooms: 1



Request a Viewing: **020 8524 0000** Email: southchingford@wearechurchills.co.uk



Located on Tufton Road in Chingford, this delightful ground floor apartment offers a perfect blend of comfort and convenience. Boasting two spacious double bedrooms, this property is ideal for small families, couples, or individuals seeking a peaceful retreat.

As you enter, you are welcomed into a bright and airy reception room, perfect for relaxation or entertaining guests. The well-appointed kitchen provides ample space for culinary adventures, while the adjoining dining area allows for enjoyable meals with family and friends.

One of the standout features of this apartment is its own private garden, a rare find in urban living. This outdoor space is perfect for enjoying sunny afternoons, hosting barbecues, or simply unwinding in a tranquil setting.

The location is superb, situated close to Chingford Mount, where you will find a variety of shops, cafes, and restaurants to explore. Families will appreciate the proximity to Chase Lane School and the nearby park, providing excellent educational and recreational opportunities for children.

This ground floor apartment on Tufton Road is not just a home; it is a lifestyle choice, offering both comfort and accessibility in a vibrant community. Whether you are looking to buy or rent, this property is a wonderful opportunity not to be missed.

