



Chepstow Road, £300,000

- Sought after location
- Conveniently located
- Three bedroom semi detached
- Driveway
- Garden
- Updated & Improved
- EPC Rating: C



 3  1  2



About the property

A Superb Opportunity to Acquire a Spacious Family Home in a Highly Sought-After Location

This well-presented and generously proportioned family home offers versatile accommodation and is ideally situated within a popular residential area close to the city centre.

The property briefly comprises an entrance porch leading into a welcoming hallway, a comfortable living room, and a spacious lounge/dining room providing an ideal space for family living and entertaining. The ground floor further benefits from a well-appointed kitchen and a separate utility room.

To the first floor are three well-proportioned bedrooms and a family bathroom.

Additional features include gas central heating and uPVC double glazing throughout. Externally, the property offers a spacious driveway to the front leading to garage, providing off-road parking, while to the rear there is a fully enclosed garden, ideal for families and outdoor enjoyment.



Accommodation

Entrance Porch

Hallway

Living Room

12' 6" x 12' 2" (3.81m x 3.71m)

Lounge/Dining Room

12' 6" x 12' 2" (3.81m x 3.71m)

Kitchen

8' 10" x 8' 10" (2.69m x 2.69m)

First Floor

Bedroom One

12' 6" x 12' 6" (3.81m x 3.81m)

Bedroom Two

12' 6" x 12' 6" (3.81m x 3.81m)

Bedroom Three

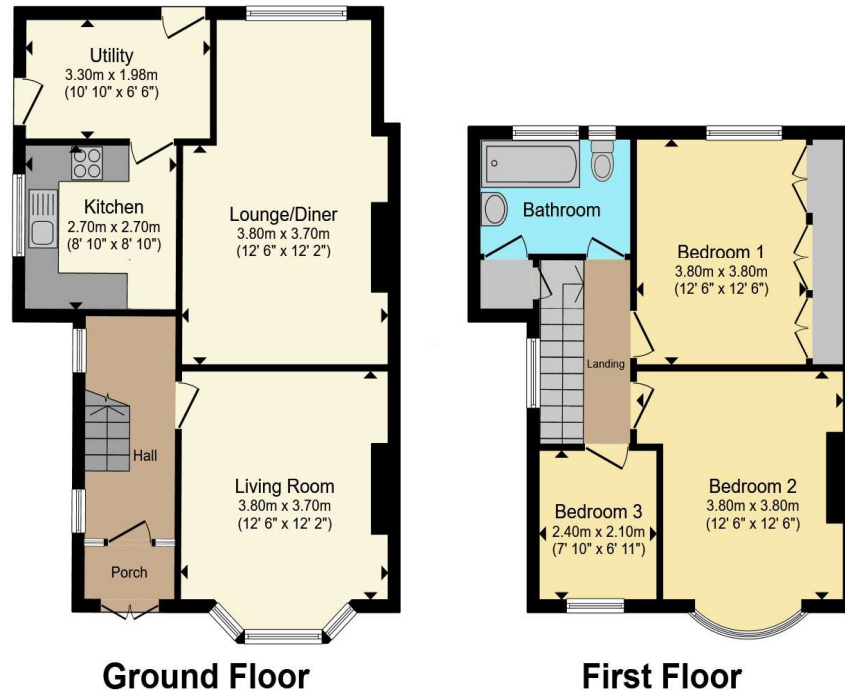
7' 10" x 6' 11" (2.39m x 2.11m)

Outside

01633 221892

newport@peteralan.co.uk

Floorplan



Total floor area 102.7 m² (1,106 sq.ft.) approx

This floor plan is for illustrative purposes only. It is not drawn to scale. Any measurements, floor areas (including any total floor area), openings and orientation are approximate. No details are guaranteed, they cannot be relied upon for any purpose and they do not form part of any agreement. No liability is taken for any error, omission or misstatement. A party must rely upon its own inspection(s). Powered by www.propertybox.io



Important Information

Note while we endeavour to make our sales details accurate and reliable, if there is any point which is of particular interest to you, please contact the office and we will be pleased to confirm the position for you. We have not personally tested any apparatus, equipment, fixtures, fittings or services and cannot verify they are in working order or fit for their purposes. Nothing in these particulars is intended to indicate that carpets or curtains, furnishings or fittings, electrical goods (whether wired or not). Gas fires or light fittings or any other fixtures not expressly included form part of the property offered for sale. This computer generated Floorplan, if applicable, is intended as a general guide to the layout and design of the property. It is not to scale and should not be relied upon for dimensions. Tenure: We cannot confirm the tenure of the property as we have not had access to the legal documents. The buyer is advised to obtain verification from their solicitor or surveyor.

Peter Alan Limited is registered in England and Wales under company number 2073153, Registered Office is Cumbria House, 16-20 Hockliffe Street, Leighton Buzzard, Bedfordshire, LU7 1GN. VAT Registration Number is 500 2481 05. For activities relating to regulated mortgages and non-investment insurance contracts, Peter Alan Limited is an appointed representative of Connells Limited which is authorised and regulated by the Financial Conduct Authority. Connells Limited's Financial Services Register number is 302221. Most buy-to-let

