



A two bedroom maisonette with private garden close to the amenities of Pinner  
West End Court, Pinner, HA5 1BP





**Asking Price: £2,000 pcm**

## **A two bedroom maisonette with private garden close to the amenities of Pinner**

West End Court, Pinner, HA5 1BP

---

- ENTRANCE HALL • LIVING ROOM WITH LARGE BAY WINDOW • MODERN FITTED KITCHEN • TWO DOUBLE BEDROOMS BOTH WITH BAY WINDOWS • FAMILY BATHROOM • SMALL PAVED REAR GARDEN • ON STREET PERMIT PARKING • UNFURNISHED

---

### **Description**

This two double bedroom ground floor flat offers stylish living areas and is set in the heart of Pinner. The accommodation comprises of an entrance hallway. Off the hallway is a bright and inviting reception room and a modern fitted kitchen, with eye and base level units providing ample storage and a door opening to the garden. Completing the property are two welcoming double bedrooms and a fresh three-piece bathroom. The low maintenance, paved garden enjoys fenced borders.

**\*\* An advance reservation payment of one weeks rent is required to secure the property \*\***

### **Location**

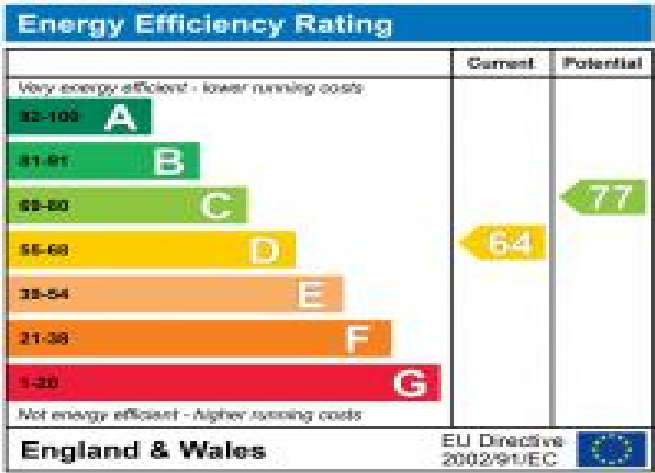
West End Court is a short walk from Pinner high street with its charming array of shops, eateries and coffee houses. For commuters, there are several bus routes as well as Pinner's Metropolitan Line station, providing access into Central London. Nearby are popular schools including West Lodge Primary School and Pinner High School.



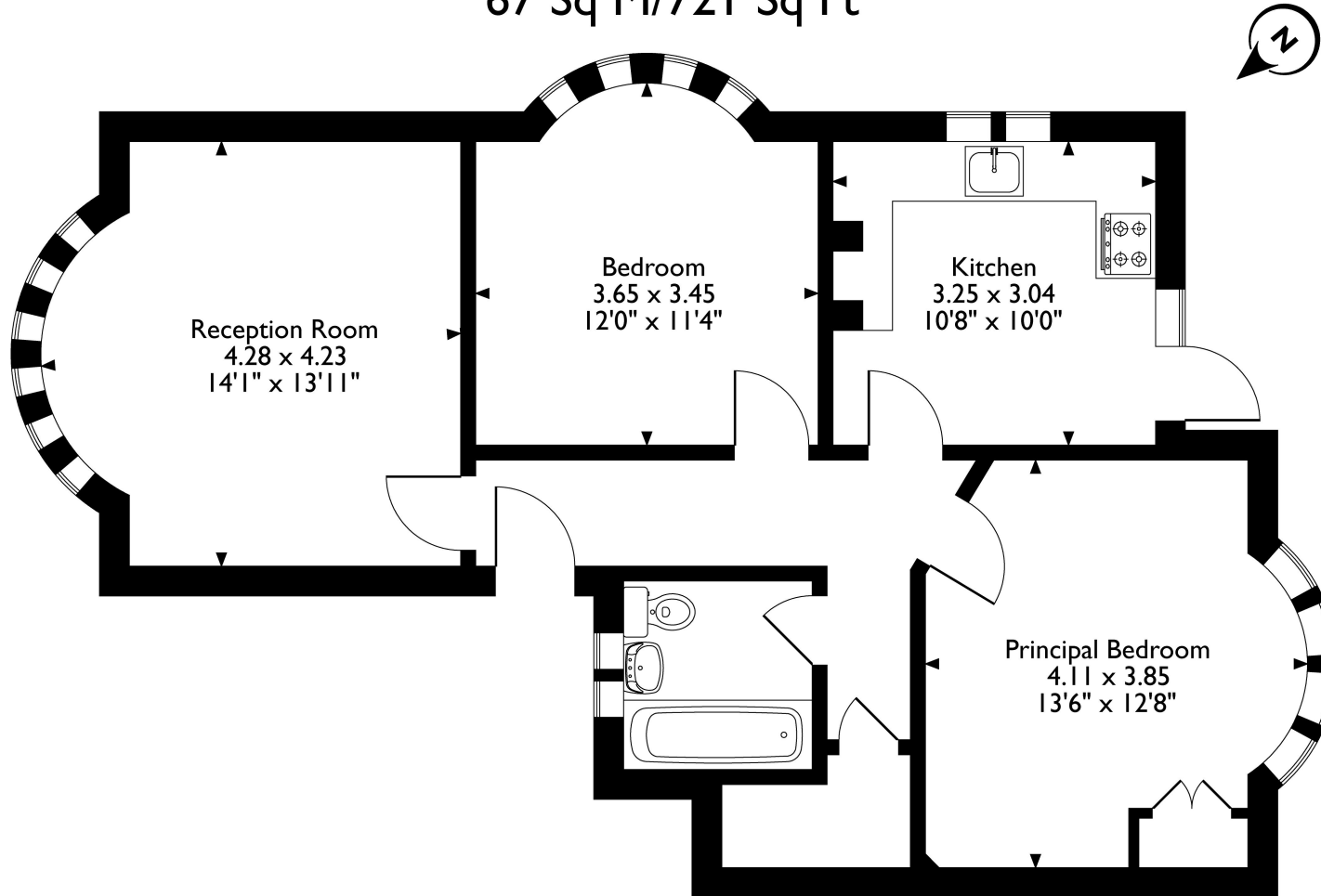


**Additional Information**

- Local Authority: Harrow
- Council Tax Band: D
- Deposit Amount: £2,307.00
- Reservation Payment: One weeks rent
- Energy Efficiency Rating: Band D
- Available Date: 27/02/2026



West End Court, West End Avenue, Pinner, HA5 1BP  
Approximate Gross Internal Area  
67 Sq M/721 Sq Ft



**Ground Floor**

Please note that the location of doors, windows and other items are approximate and this floorplan is to be used for illustrative purposes only. Unauthorized reproduction is prohibited.

