

The Close

Pinner • • HA5 1PH
Asking Price: £350,000



coopers
est 1986

The Close

Pinner • • HA5 1PH

A beautifully presented one-bedroom first-floor maisonette with a private garden and shared driveway, conveniently positioned within a desirable cul-de-sac in the heart of Eastcote.

The property has undergone renovation in recent years and is offered to the market with high-end modern finishes throughout.

Ideally located just minutes' walk from Eastcote town centre, which offers a wide range of shops, restaurants, coffee houses, supermarkets, and excellent transport links via the Metropolitan and Piccadilly Line tube stations.

This exceptional residence is ideal for first-time buyers, downsizers, and investors alike.

First Floor Maisonette

One Large Double Bedroom

Excellent Condition Throughout

Newly Fitted Kitchen

Long Lease Remaining

Private Garden

Quiet Residential Road

Allocated Parking Space

Walking Distance to Eastcote

Approx Area: 555 sq ft

These particulars are intended as a guide and must not be relied upon as statements of fact. Your attention is drawn to the Important Notice on the last page.

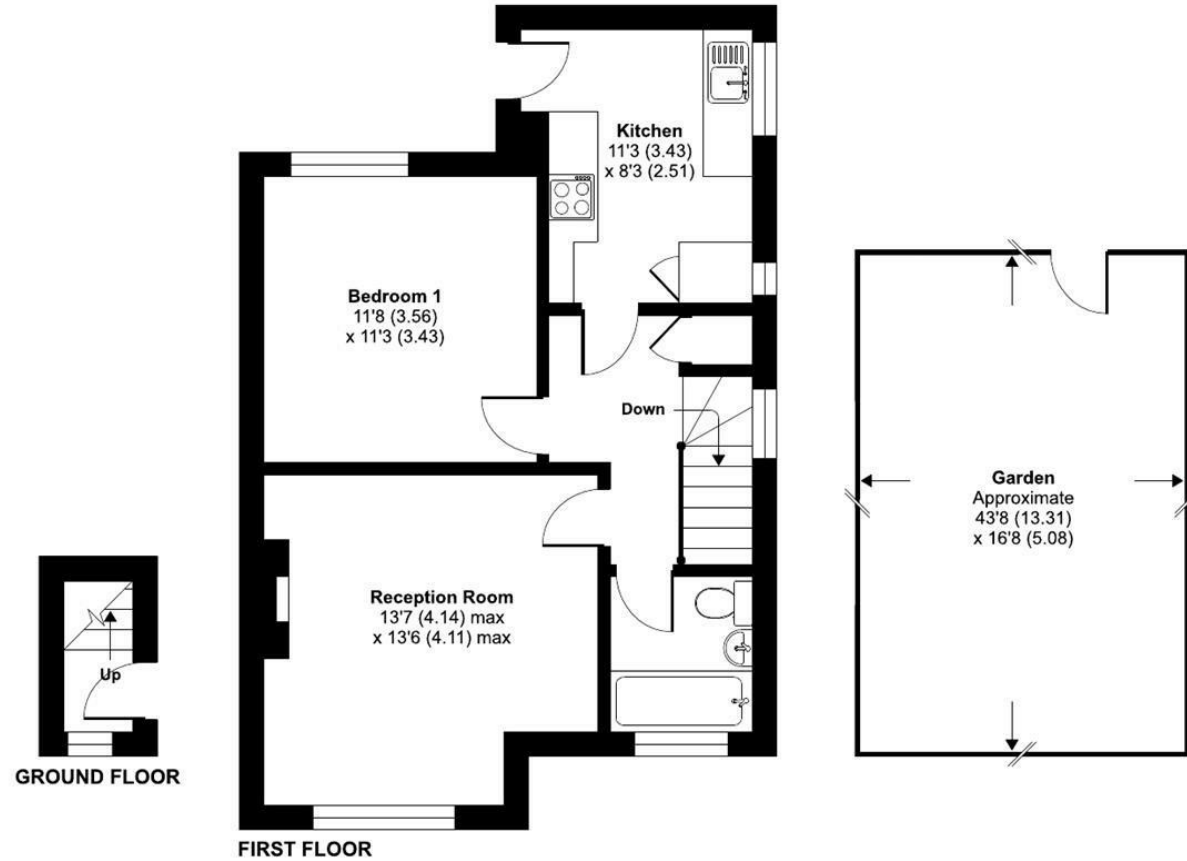




The Close, Eastcote, Pinner, HA5

Approximate Area = 555 sq ft / 51.6 sq m

For identification only - Not to scale



Floor plan produced in accordance with RICS Property Measurement 2nd Edition, Incorporating International Property Measurement Standards (IPMS2 Residential). © n/checom 2026. Produced for Coopers. REF: 1451778

coopers
est 1986

coopers
est 1986

18 Bridge Street, Pinner,
Middlesex, HA5 3JF
pinner@coopersresidential.co.uk

CoopersResidential.co.uk

Energy Efficiency Rating		Current	Target
Very energy efficient - lower running costs	A		
Energy efficient - lower running costs	B		
Decent energy efficiency - lower running costs	C		
Some energy efficiency - lower running costs	D		
Not very energy efficient - higher running costs	E	59	66
Very poor energy efficiency - higher running costs	F		
Not energy efficient - higher running costs	G		

England & Wales
EPC Directive 2002/91/EC

Important Notice: These particulars, whilst believed to be accurate are set out as a general outline only for guidance and do not constitute any part of an offer or contract. Intending purchasers should not rely on them as statements or representation of fact, but must satisfy themselves by inspection or otherwise has the authority to make or give any representation or warranty in respect of the property.