

**RUSH
WITT &
WILSON**



**36 The Landmark, 2 Egerton Road, Bexhill-On-Sea, East Sussex TN39 3HH
£409,000 Share of Freehold**

Stunning second floor apartment situated opposite the iconic De La Warr Pavillion and picturesque Bexhill seafront whilst being in very close proximity to Bexhill train station offering direct links to London Victoria, Gatwick airport, Ashford International and Bexhill town centre with its wide range of amenities. Offering bright and spacious accommodation throughout, the property comprises stunning living room with beautiful sea views, three double bedrooms with the main benefiting from an en-suite, modern kitchen and modern family bathroom. Other internal benefits include modern electric heating system throughout, double glazed windows and doors and two separate sun balconies both enjoying stunning views. Viewing comes highly recommended by Rush Witt & Wilson, sole agents.



Communal Entrance Hallway

Stairs and lift leading to the second floor.

Private Entrance Hallway

Large entrance fire door, entry-phone system, two radiators, boiler cupboard and two additional storage cupboards.

Living Room

18'6 x 18'10 (5.64m x 5.74m)
Beautiful feature curved window to the front elevation overlooking the De La Warr Pavillion with stunning views across the green and the sea, two radiators, double glazed French doors giving access onto the balcony.

Kitchen

12'1 x 9'10 (3.68m x 3.00m)
Modern fitted kitchen with range of matching wall and base level units, quartz straight edge worktop surfaces, one and a half bowl sink with drainer and mixer tap, four ring electric hob and extractor canopy above, integrated electric oven, integrated fridge and freezer, integrated dishwasher, tiled flooring.

Bedroom One

22'3 x 13'5 (6.78m x 4.09m)
Double glazed windows to the side elevation with stunning views of the De La Warr Pavillion and the sea, radiator.

En-Suite

Modern suite comprising wc with low level flush, wash hand basin with mixer tap, walk-in shower cubicle with chrome wall mounted shower controls, shower attachment, showerhead and chrome heated towel rail.

Bedroom Two

13'1 x 10'6 (3.99m x 3.20m)
Double glazed French doors giving access onto the balcony which is south facing and has stunning views of the sea, radiator.

Bedroom Three

15'10 x 10'9 (4.83m x 3.28m)
Double glazed windows to the front elevation with stunning views of the sea, radiator.

Family Bathroom

Suite comprising wc with low level flush, wash hand basin with mixer tap, tiled bath with chrome mixer tap with wall

mounted shower controls, attachment and shower head, chrome heated towel wail, part tiled walls, tiled flooring.

Lease & Maintenance

111 years remaining on the lease.

We have been advised that the annual ground rent is £250 and the annual service charge is £4,943.

Agents Note

Council Tax Band - E

Fixtures and fittings: A list of the fitted carpets, curtains, light fittings and other items fixed to the property which are included in the sale (or may be available by separate negotiation) will be provided by the Seller's Solicitors.

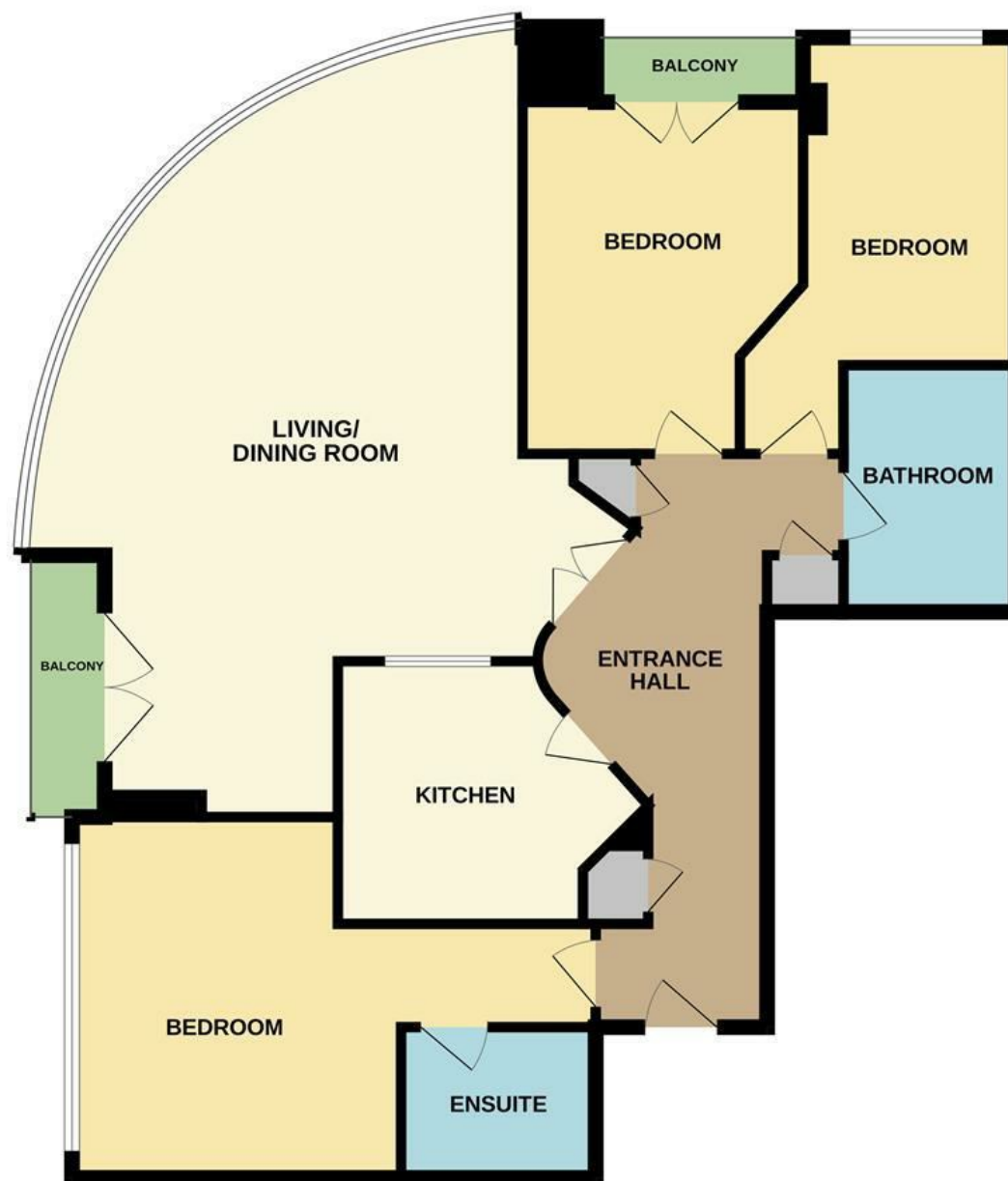
Important Notice:

1. Particulars: These particulars are not an offer or contract, nor part of one. You should not rely on statements by Rush, Witt & Wilson in the particulars or by word of mouth or in writing ("information") as being factually accurate about the property, its condition or its value. Neither Rush, Witt & Wilson nor any joint agent has any authority to make any representations about the property, and accordingly any information given is entirely without responsibility on the part of the agents, seller(s) or lessor(s).
2. Photos, Videos etc: The photographs, property videos and virtual viewings etc. show only certain parts of the property as they appeared at the time they were taken. Areas, measurements and distances given are approximate only.
3. Regulations etc: Any reference to alterations to, or use of, any part of the property does not mean that any necessary planning, building regulations or other consent has been obtained. A buyer or lessee must find out by inspection or in other ways that these matters have been properly dealt with and that all information is correct.
4. VAT: The VAT position relating to the property may change without notice.
5. To find out how we process Personal Data, please refer to

our Group Privacy Statement and other notices at <https://rushwittwilson.co.uk/privacy-policy>

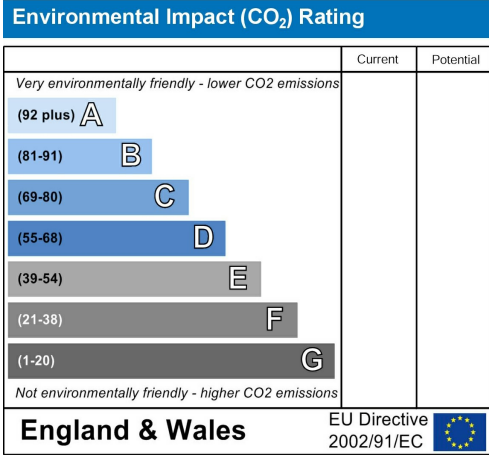
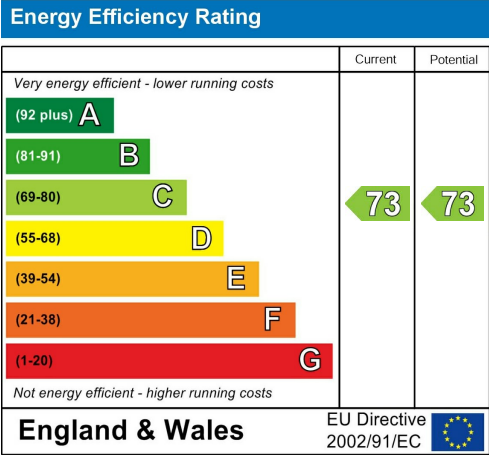
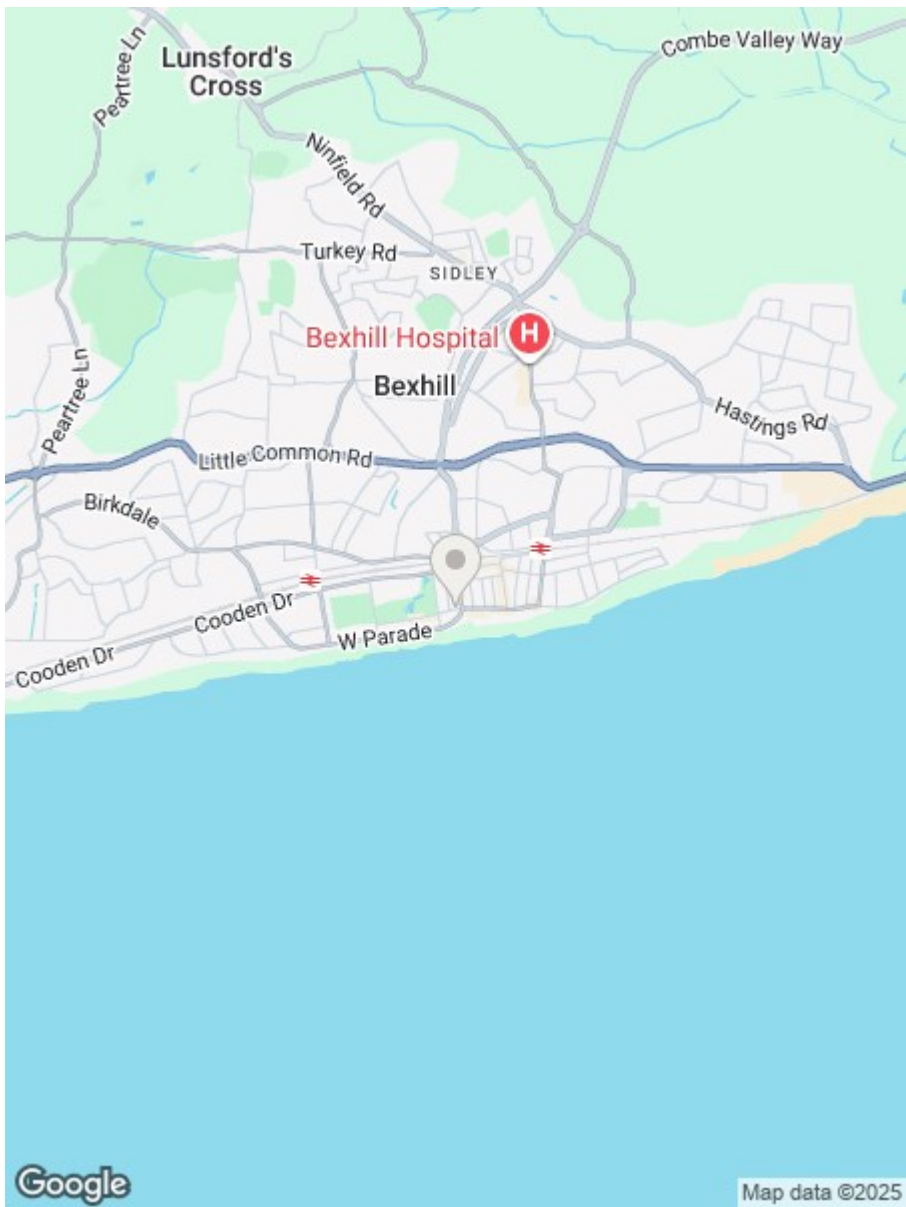


2ND FLOOR
1199 sq.ft. (111.4 sq.m.) approx.



TOTAL FLOOR AREA : 1199 sq.ft. (111.4 sq.m.) approx.

Whilst every attempt has been made to ensure the accuracy of the floorplan contained here, measurements of doors, windows, rooms and any other items are approximate and no responsibility is taken for any error, omission or mis-statement. This plan is for illustrative purposes only and should be used as such by any prospective purchaser. The services, systems and appliances shown have not been tested and no guarantee as to their operability or efficiency can be given.
Made with Metrofix ©2025



**RUSH
WITT &
WILSON**

**Residential Estate Agents
Lettings & Property Management**



**3 Devonshire Road
Bexhill-on-Sea
East Sussex
TN40 1AH
Tel: 01424 225588
bexhill@rushwittwilson.co.uk
www.rushwittwilson.co.uk**