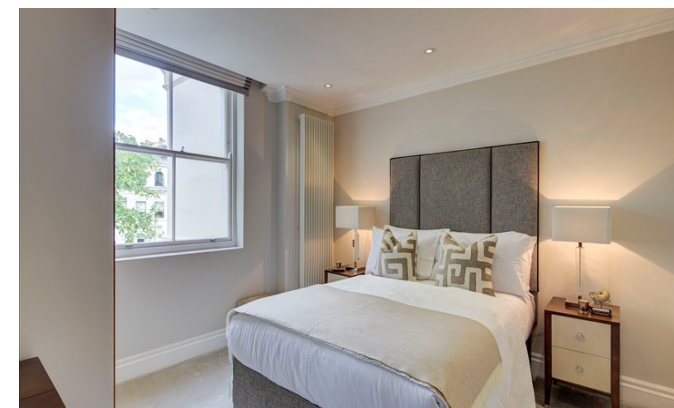




**INTERLET**

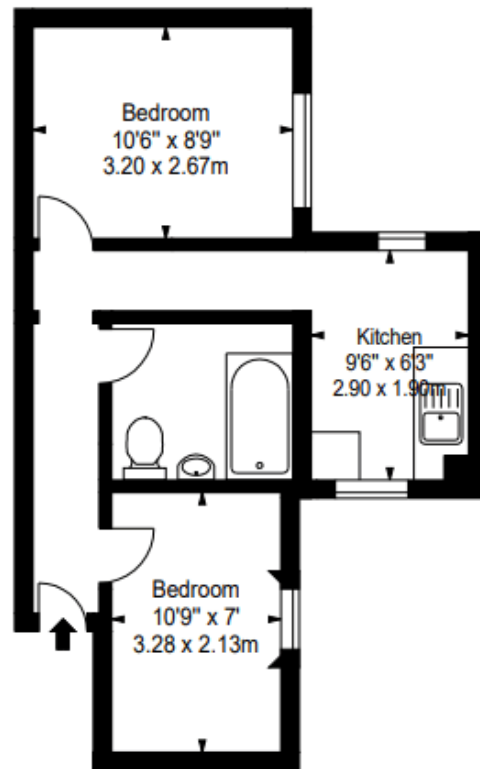
KENSINGTON GARDENS SQUARE, BAYSWATER, LONDON, W2  
£815 PW



An interior designed one double bedroom apartment in this beautiful Grade II listed building close to Kensington Gardens, Bayswater W2. This superbly refurbished flat comprises a splendid bedroom with built-in custom wardrobes, an exquisite polished marble bathroom, a luxurious reception room with bespoke furniture, and a fully fitted bespoke Miele kitchen. The apartment has access to the stunning communal gardens which is one of London's few remaining traditional Garden squares. Garden House is located in a quiet residential part of Bayswater and close to the amenities of Westbourne Grove, Notting Hill, and the beautiful Hyde Park. It is also perfectly located for easy access to transport links with Bayswater and Queensway tube station just 5 minutes walk away.[...]

[lettings@interlet.com](mailto:lettings@interlet.com)  
+44(0)20 7795 6525  
[www.interlet.com](http://www.interlet.com)

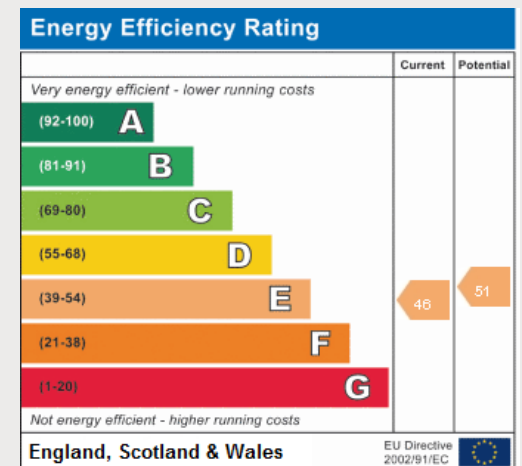
Approx. Gross Internal Area \*  
366 Ft<sup>2</sup> - 34.00 M<sup>2</sup>



Third Floor

### Important Notice

Interlet and their clients give notice that: 1) They are not authorised to make or give any representations or warranties in relation to the property, either here or elsewhere. The particulars do not form part of any offer or contract and must not be relied upon as statements or representations of fact. 2) Any areas, measurements, and distances are approximate. The text, images, and plans are for guidance only and are not necessarily comprehensive. It should not be assumed that the property has all necessary planning, building regulation, or other contents. Interlet has not tested any services, equipment, or facilities. Prospective tenants must satisfy themselves by inspection or otherwise. Please note that the local area may be affected by aircraft noise, you should make your own inquiries regarding any noise in the area before you make an offer.



**i**NTERLET  
SALES & LETTINGS

Welcome home.