



Southend Crescent, SE9

£1,850 Per calendar month

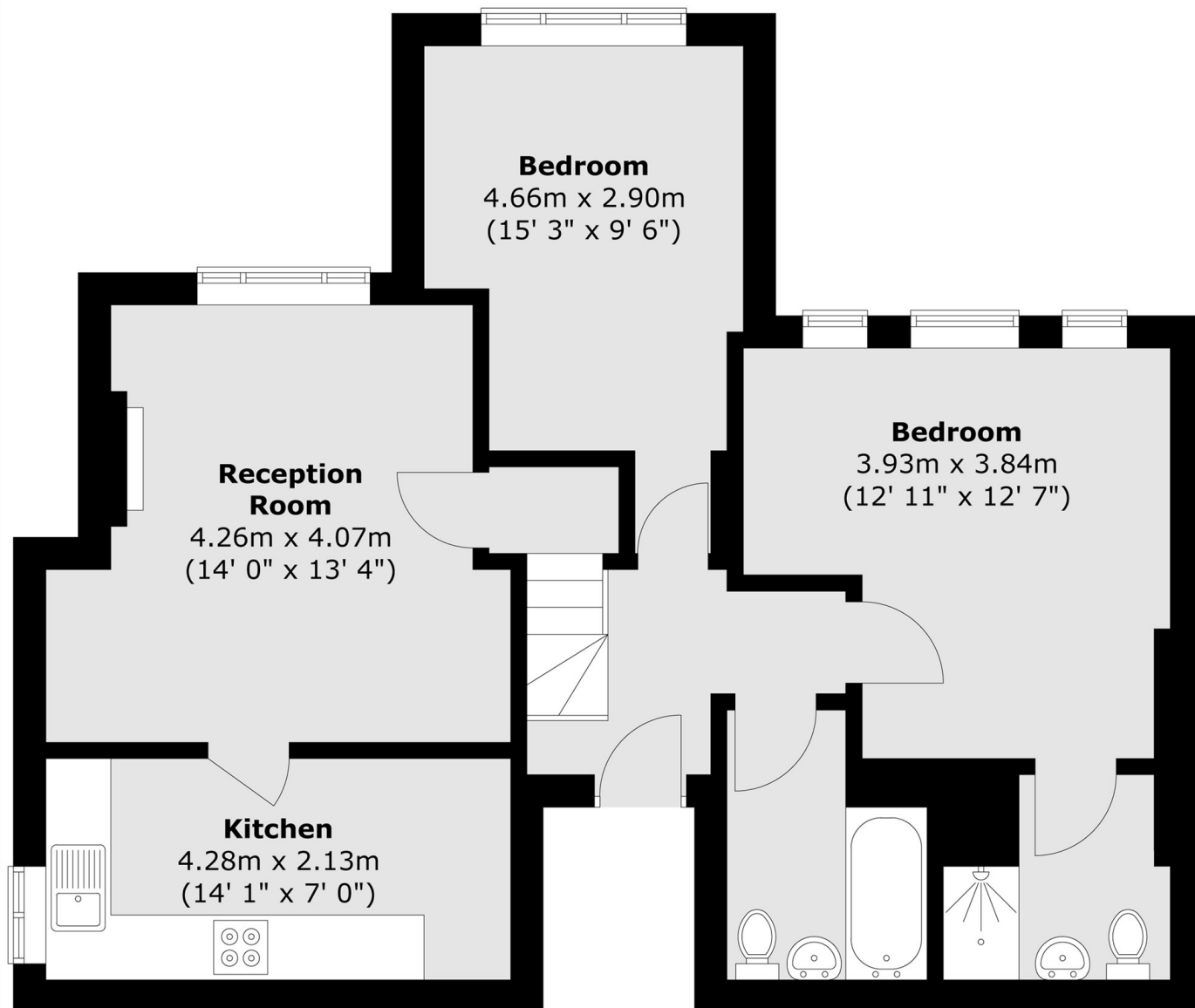
A spacious two double bedroom property featuring a separate kitchen and a generously sized living room. Neutral décor throughout.

Features

- Two Bedrooms
- Large living room
- Separate kitchen
- Period property
- Unfurnished
- New Eltham train station

Southend Crescent, London, SE9

First Floor



Total area (approx.) : 65.4 sq. m (704 sq. ft)