



Felixstowe Beach Park, | | Felixstowe | IP11 2HA

Guide Price £120,000

NICHOLAS
ESTATES

Key features

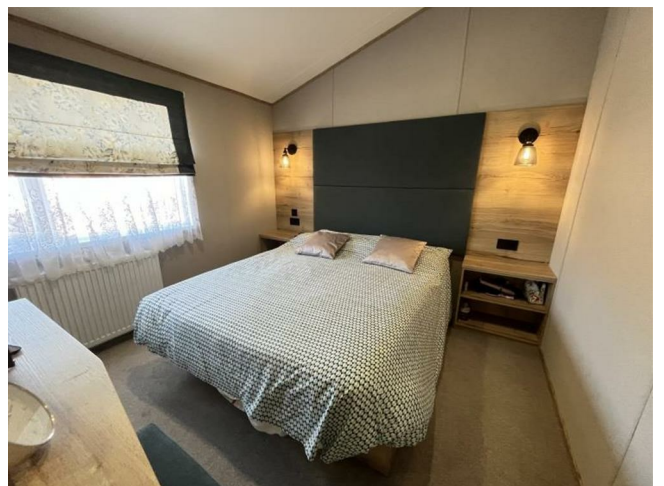
- 11.5 Months Site Use
- 2022 Luxury Lodge
- Access To Swimming Pool and Restaurant
- Three Bedrooms
- Decked Seating area

Description

A luxury Platinum Plus 2022 Brisbane Lodge situated on the Felixstowe Beach Holiday Park. The Lodge has access to the onsite swimming pool, family restaurant and bar and an adventure playground.




Directions



A luxury Platinum Plus 2022 Brisbane Lodge situated on the Felixstowe Beach Holiday Park. The lodge offers a generous open plan, living/dining/kitchen area, inner hall, bathroom, master bedroom with dressing area and en-suite shower room, bedroom two and



Energy Efficiency Rating		
	Current	Potential
<i>Very energy efficient - lower running costs</i>		
(92 plus) A		
(81-91) B		
(69-80) C		
(55-68) D		
(39-54) E		
(21-38) F		
(1-20) G		
<i>Not energy efficient - higher running costs</i>		
England & Wales	EU Directive 2002/91/EC	

Council Tax Band EPC Rating

NICHOLAS

— ESTATES —

173 Hamilton Road
Felixstowe
Suffolk
IP11 7DR
01394 282828
felixstowe@yourhome.co.uk
yourhome.co.uk