

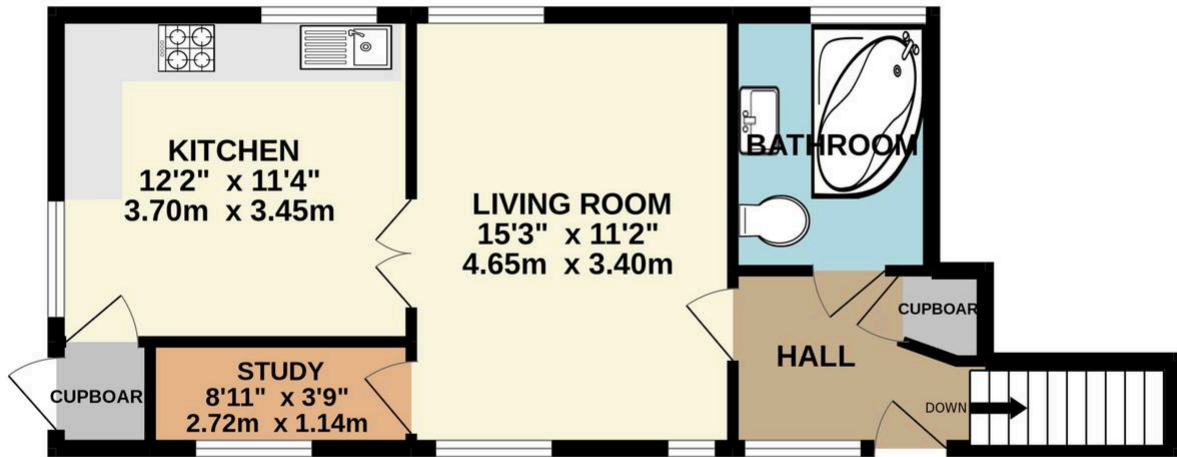


## Castle Hill, Reading

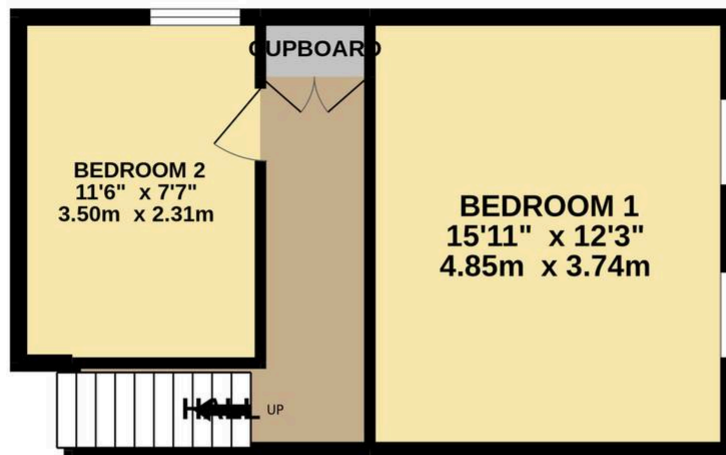
£1,350 pcm Leasehold

Split Level Apartment • Two Bedrooms • Lounge • Separate Kitchen • Bathroom • Communal Garden •  
Allocated Parking Space • Unfurnished with Appliances • Available from 8th July

GROUND FLOOR



BASEMENT LEVEL



Whilst every attempt has been made to ensure the accuracy of the floorplan contained here, measurements of doors, windows, rooms and any other items are approximate and no responsibility is taken for any error, omission or mis-statement. This plan is for illustrative purposes only and should be used as such by any prospective purchaser. The services, systems and appliances shown have not been tested and no guarantee as to their operability or efficiency can be given.  
Made with Metropix ©2022

You can include any text here. The text can be modified upon generating your brochure.



### Entrance Hall

### Lounge

15' 3" x 11' 2" (4.65m x 3.40m)

### Study

8' 11" x 3' 7" (2.72m x 1.09m)

### Kitchen

12' 2" x 11' 4" (3.71m x 3.45m)



### Bathroom

### Lower Hallway

### Bedroom One

15' 11" x 12' 3" (4.85m x 3.73m)

### Bedroom Two

11' 6" x 7' 7" (3.50m x 2.31m)

