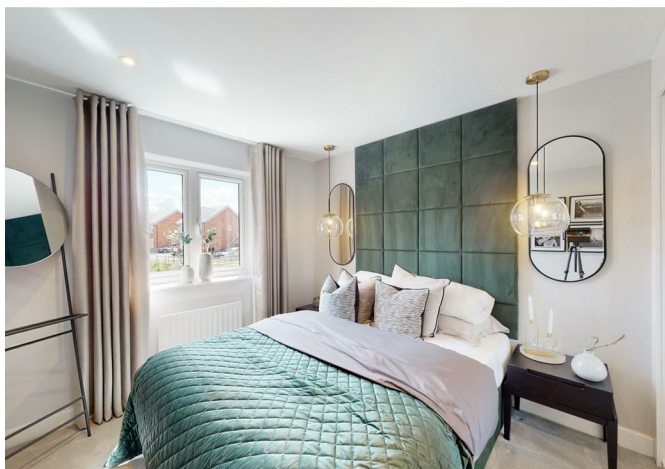




35, Oteley Road, Oteley Gardens, Shrewsbury, SY2 6GD

£1,650 Per Month



35, Oteley Road, Oteley Gardens, Shrewsbury, SY2 6GD

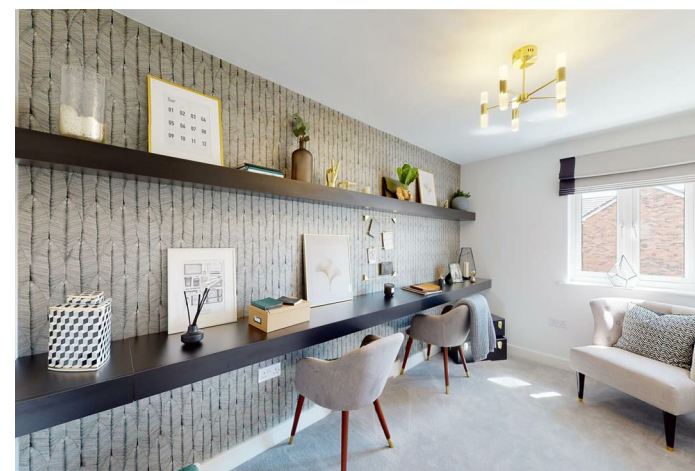
£1,650 Per Month

VIRTUAL TOUR AVAILABLE: Beautiful FULLY FURNISHED new build three bedroom semi-detached house located within the popular Oteley Gardens development off Oteley Road, a short distance to the East of Shrewsbury town centre. This property comes with parking for three cars and a garage.

Available: 15/08/26

Description

Comprising: Entrance hall, WC, open plan kitchen/dining room with integrated washing machine, gas hob, fridge/freezer and dishwasher, large living room with doors to rear garden and under-stairs storage, three well-sized bedrooms, en-suite shower room to master, further family bathroom. Landscaped rear garden, detached garage, three parking spaces. Double glazing. Gas central heating. EPC B.



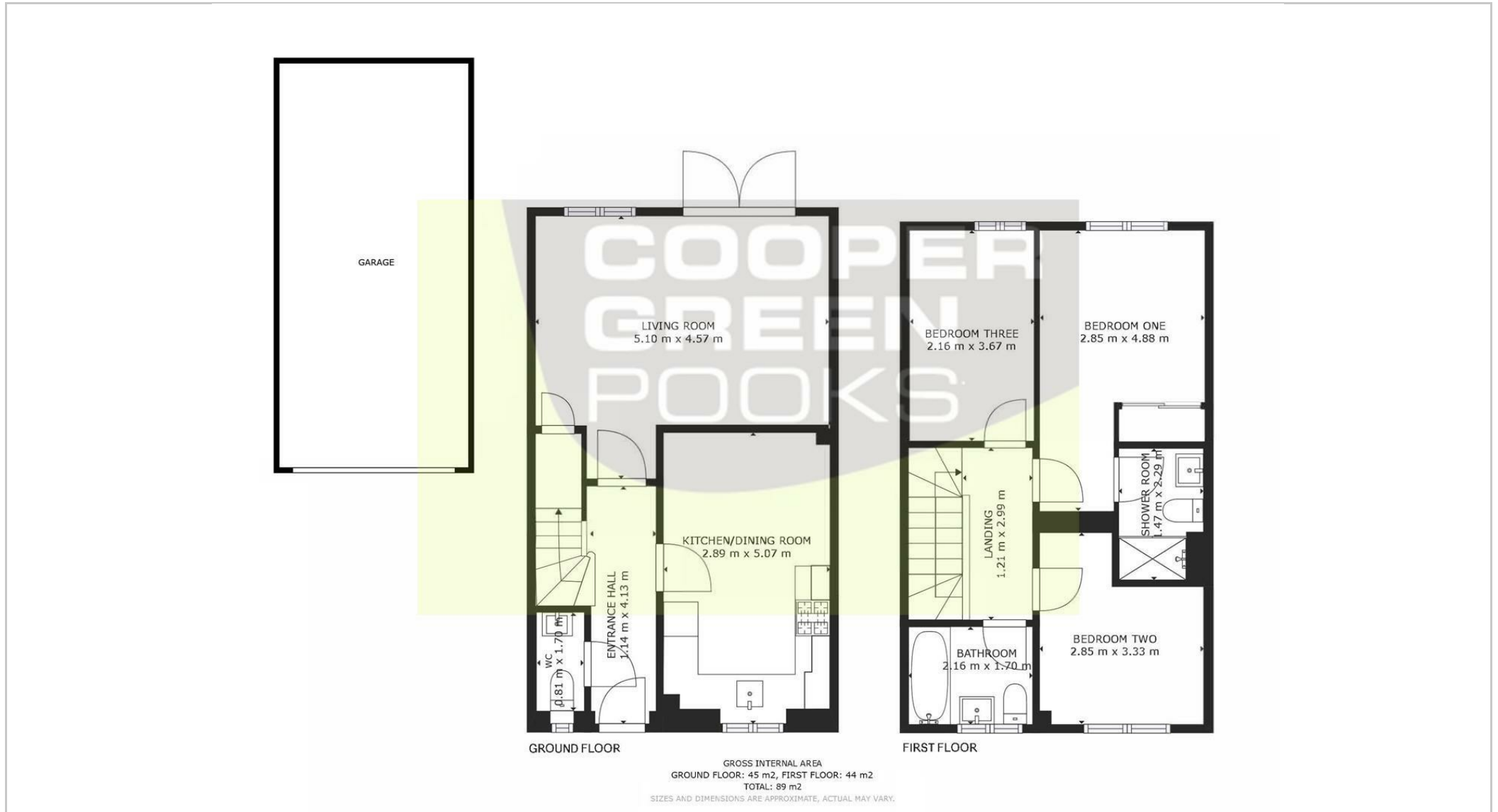
Furnished

Council Tax Band: C

Available: 15th August 2026

EPC: B

Floor Plans



These particulars, whilst believed to be accurate are set out as a general outline only for guidance and do not constitute any part of an offer or contract. Intending purchasers should not rely on them as statements of representation of fact, but must satisfy themselves by inspection or otherwise as to their accuracy. No person in this firm's employment has the authority to make or give any representation or warranty in respect of the property.