



Guide Price
£240,000

Leasehold

2x  1x  1x 

**Trenholme Court,
Beechwood Road,
Caterham, Surrey, CR3**

OVER 60?

Secure this property
for up to **59% less!**

cubitt & west
Helping you move forwards



Main features

- Large first floor flat within walking distance to Caterham Station
- Off road parking and garage en-bloc
- Electric under floor heating and views over Caterham Valley
- Backs onto woodlands to enjoy walks & outside space
- Long lease

Accommodation

FIRST FLOOR

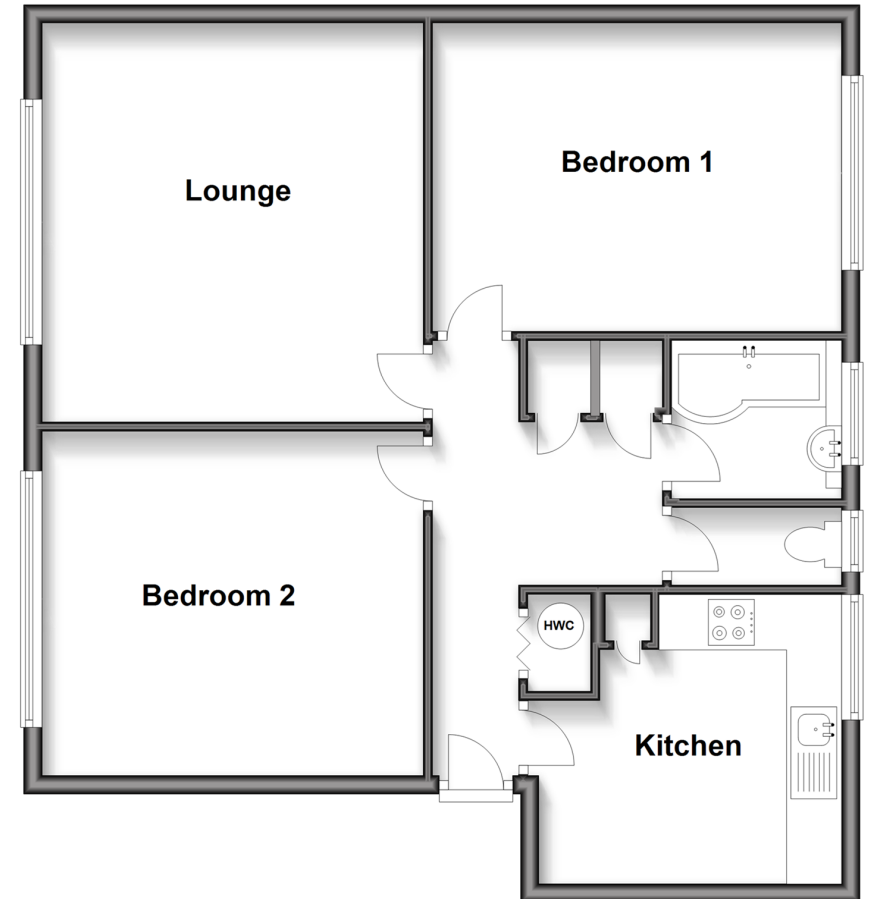
Entrance Hall
 Lounge: 15'7 x 12'0 (4.75m x 3.66m)
 Kitchen: 10'9 x 10'2 (3.28m x 3.10m)
 Bedroom 1: 13'9 x 12'0 (4.19m x 3.66m)
 Bedroom 2 : 14'7 x 8'2 (4.45m x 2.49m)
 Bathroom
 Separate toilet

OUTSIDE

Garage en-bloc
 Off street parking
 Communal grounds

First Floor

Approx. 75.0 sq. metres (807.7 sq. feet)



Call Caterham - 01883 331000 ■ cubittandwest.co.uk

- Legal advice should be taken to verify fixtures/fittings, planning, alterations and/or lease details
- Appliances & services are untested, dimensions are approximate and floor plans are not to scale
- Through a Homewise Home For Life Plan people aged 60+ can secure this property for up to 50% less, by purchasing a Lifetime Lease.



24404066/20250922/ZK/LP