



*Shirland Road, Maida Vale, W9 2BT  
Offers In Excess Of £370,000 Share of Freehold*





1 x  1 x  1 x 

A recently refurbished one bedroom flat, situated on the third floor of a Victorian terrace on Shirland Road., with its entrance on the second floor. The property features a generously sized 17ft reception with open plan kitchen, and large double bedroom, as well as a contemporary shower room. Conveniently located close to both transport links of Warwick Avenue and Elgin Avenue tubes, Paddington recreation grounds and the picturesque canals and restaurants of Little Venice. Share of Freehold



# Shirland Road, London, W9

Approximate Gross Internal Floor Area = 45.7 sq m / 492 sq ft

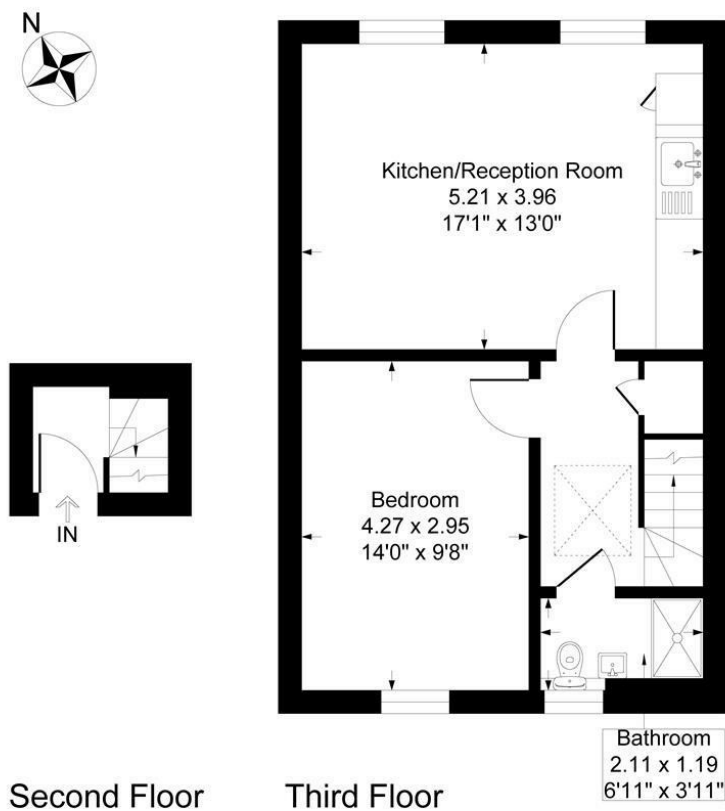


Illustration for identification purposes only, measurements are approximate, not to scale.

**Important Notice** Debussy Property Service Ltd trading as Braithwait for themselves and for the vendor of this property whose agents they are, give notice that (i) these particulars do not constitute any part of an offer or contract, (ii) all statements contained within these particulars are made without responsibility on the part of Braithwait or the vendor, (iii) whilst none in good faith, none of the statements contained within these particulars are to be relied upon as a statement of representation or fact, (iv) any intending purchaser must satisfy him/herself by inspection or otherwise as to the correctness of each of the statements contained within these particulars, (v) the vendor does not make or give either Braithwait or any person within their employment any authority to make or give any representation or warranty whatsoever in relation to this property. Wide angled lenses may be used in photographs.

Call us on 0207 289 8889 or email [sales@braithwait.co.uk](mailto:sales@braithwait.co.uk)

