

8 Casson Square London

This luxury suite is available to rent in the exclusive Eight Casson Square building, part of Southbank Place. Beautifully furnished this contemporary property comes with fully integrated appliances such as a fridge / freezer, dishwasher, washer / dryer, touch screen controls and underfloor heating and comfort cooling.

Eight Casson Square is situated moments from Waterloo Station and the River Thames providing easy access to Westminster, the City and the West End.

Resident facilities include a 24 hour concierge with a residents gym, swimming pool, and relaxation area.

£750 Per Week

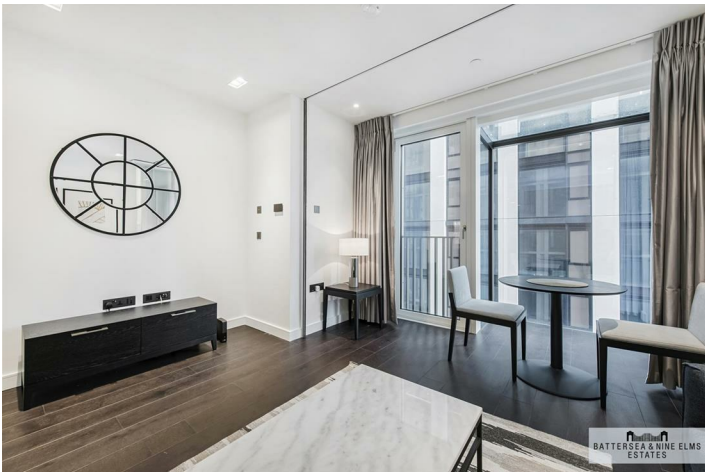
8 Casson Square London



- Studio apartment
- Excellent location
- Gymnasium
- 24 hour concierge
- Residents lounge
- Winter garden
- Indoor swimming pool & sauna



[Directions](#)





Casson Square, SE1
 Approximate Gross Internal Area
 45 sq m / 489 sq ft

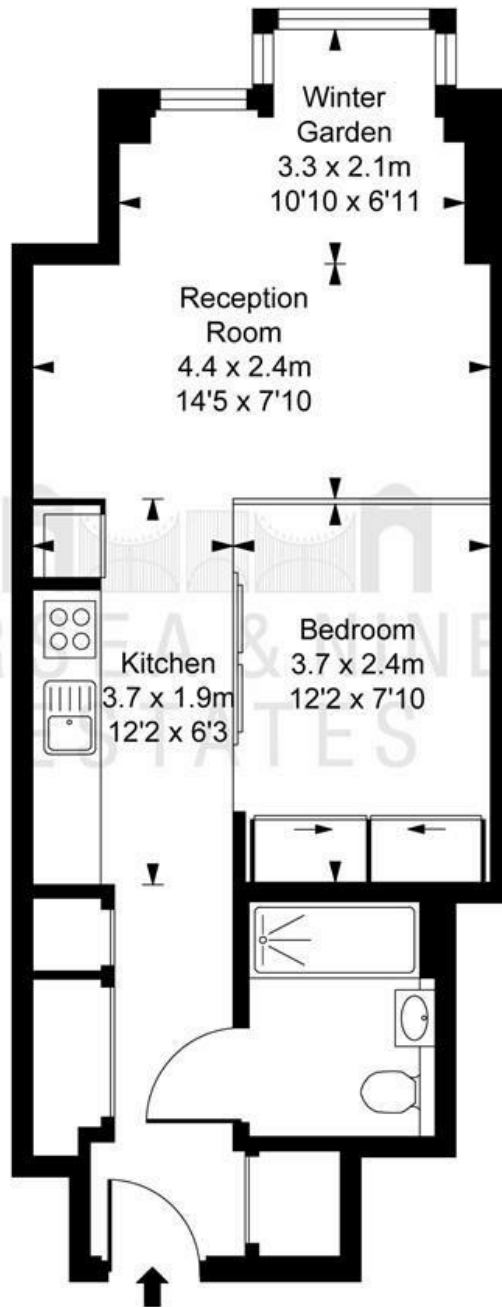


ILLUSTRATION FOR IDENTIFICATION PURPOSES ONLY
 ALL MEASUREMENTS AND AREA FIGURES SUPPLIED BY OTHERS. ACCURACY IS NOT GUARANTEED.
 THIS PLAN MUST NOT BE REPRODUCED BY ANY OTHER PERSON WITHOUT PERMISSION

These particulars, whilst believed to be accurate are set out as a general outline only for guidance and do not constitute any part of an offer or contract. Intending purchasers should not rely on them as statements of representation of fact, but must satisfy themselves by inspection or otherwise as to their accuracy. No person in this firm's employment has the authority to make or give any representation or warranty in respect of the property.

