



5 Park House Church Road, Snitterfield

Guide Price **£450,000**

5 Park House Church Road

Snitterfield, Stratford-Upon-Avon

Charming three bedroom coach house in Snitterfield. Features original details, lounge diner, kitchen, private courtyard, garage, two parking spaces, and flexible third bedroom with WC.

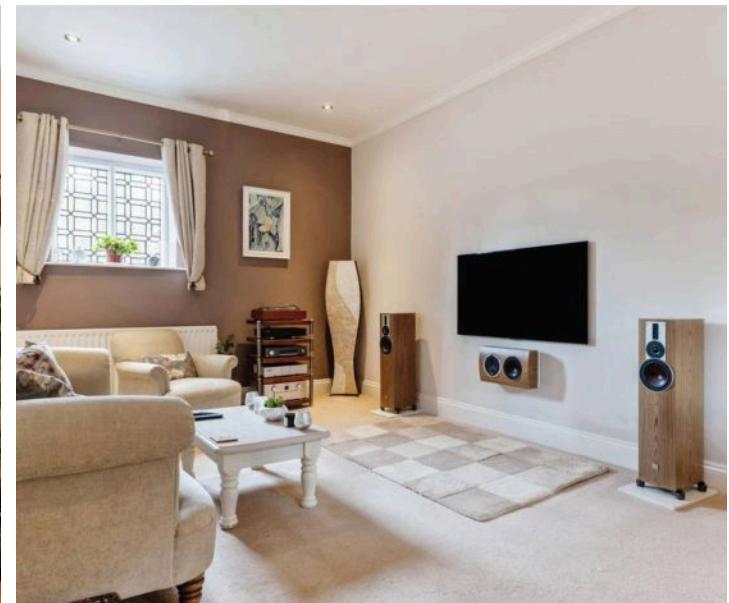
Council Tax band: D

Tenure: Freehold

EPC Energy Efficiency Rating: D

EPC Environmental Impact Rating: D

- Coach House
- Kitchen Diner
- Steeped in History
- Beautiful Village Location
- Garage
- Private Courtyard Garden
- Charm & Character Throughout
- Resident's Parking To Rear With 2 Allocated Spaces





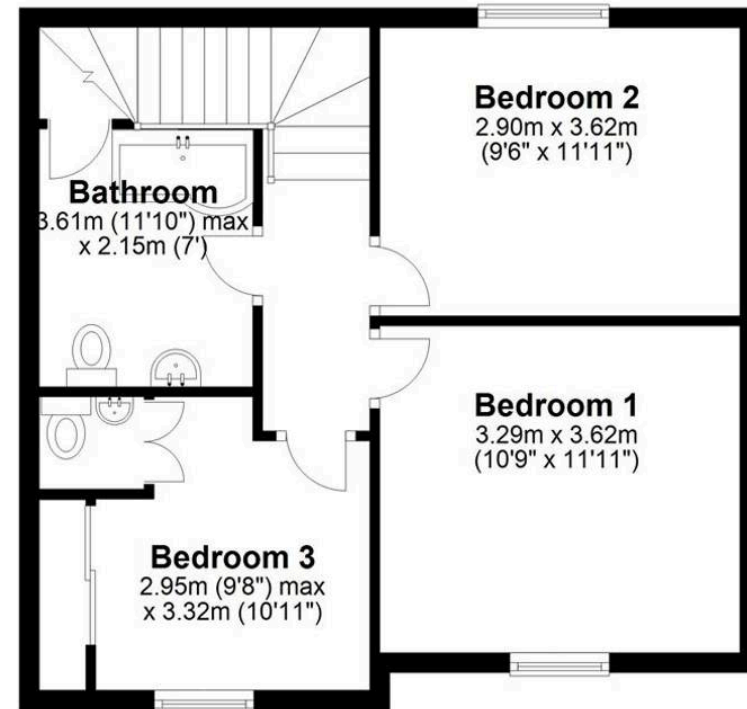
Ground Floor

Approx. 44.7 sq. metres (481.3 sq. feet)



First Floor

Approx. 45.5 sq. metres (489.5 sq. feet)



Total area: approx. 90.2 sq. metres (970.8 sq. feet)

All efforts have been made to ensure that the measurements on this floorplan are accurate however these are for guidance purposes only.
Plan produced using PlanUp.

Sheldon Bosley Knight Stratford-Upon-Avon

Sheldon Bosley Knight, 35-36 Rother Street - CV37 6LP

01789387887 · stratfordsales@sheldonbosleyknight.co.uk · www.sheldonbosleyknight.co.uk/

DISCLAIMER

All fixtures and fittings mentioned in these particulars are included in the sale, all others in the property are specifically excluded.

Photographs are reproduced for general information and it must not be inferred that any item is included for sale with the property.

These particulars are thought to be materially correct. Their accuracy is not guaranteed and they do not form part of any contract.