



PUTTERILLS

est. 1992

Bunyan Road, Hitchin, SG5 1NW
Guide Price: £575,000

PROPERTY SUMMARY

A stylish three-bedroom home in a sought-after Hitchin location, ideal for families and commuters, featuring a spacious living room, study area, and a modern kitchen/breakfast room with bi-fold doors opening to a private south-west facing garden. Upstairs offers three well-proportioned bedrooms, including a principal with en suite, plus a family bathroom. Within walking distance of the town centre and just 0.7 miles from the station, with excellent schools nearby, this is a superbly located home.

3



2



1





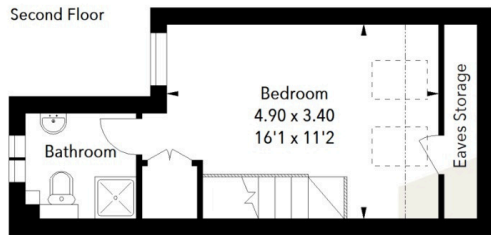
ESSEL
CKS
OOD
A



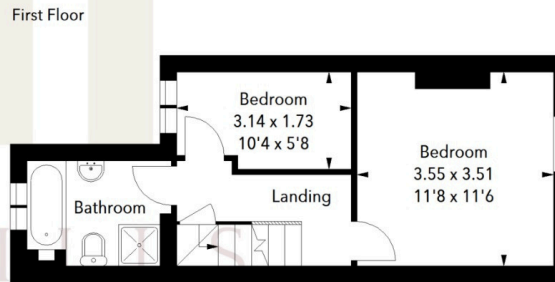
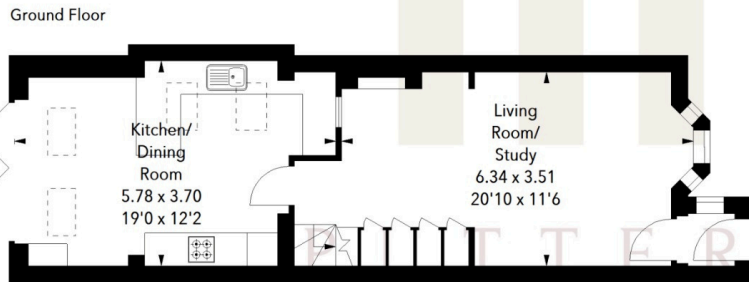








Bunyan Road, SG5
 Approximate Area = 96.43 sq m / 1038 sq ft
 (Including Eaves Storage)
 Eaves Storage Area = 2.14 sq m / 23 sq ft



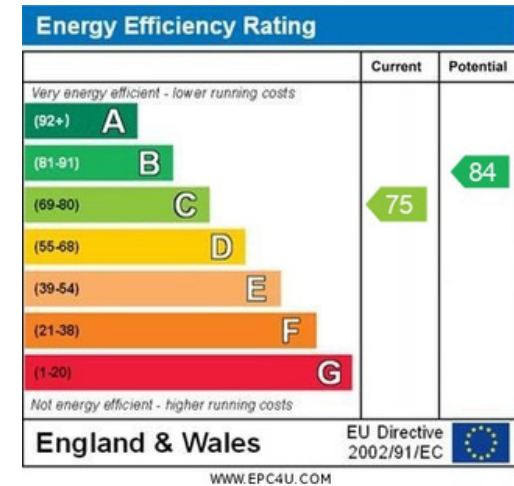
est. 1992
 Illustration For Identification Purposes Only.
 All measurements and areas are approximate, not to scale.
 © Orange Tree Photography

LOCAL AUTHORITY
 North Herts

TENURE
 Freehold

COUNCIL TAX BAND
 D

VIEWINGS
 By prior appointment only



OFFICE ADDRESS
 Putterills Hitchin
 60 Hermitage Road
 Hitchin
 SG5 1DB

CONTACT DETAILS
 01462 632222
 hitchin@putterills.co.uk
 www.putterills.co.uk