



Sutherland Street, SW1V

£500 Per week

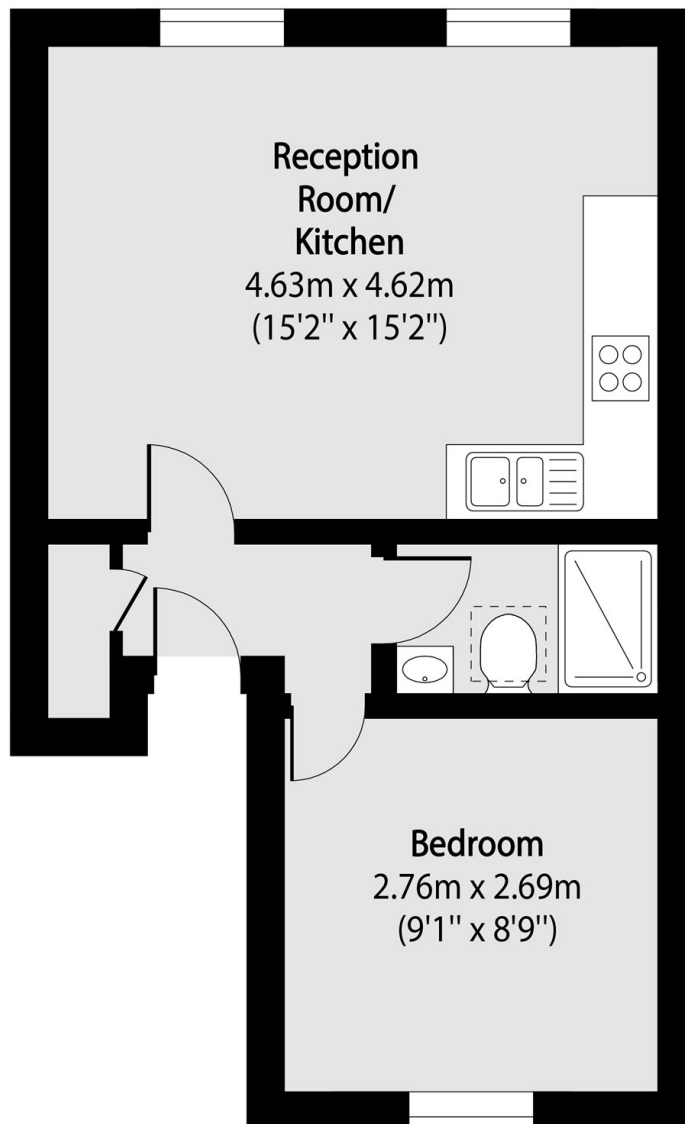
A spacious one bedroom apartment arranged over the top floor of a Victorian stucco fronted conversion with wood floors, open plan kitchen and modern finish.

Sutherland Street is well situated for access in and out of central London. There are local shops only minutes away on Warwick Way and Lupus Street, as well as being very close to the shopping in Sloane Square and Victoria. The closest tube is Pimlico and Victoria is less than a 10 minute walk

Features

- One Double Bedroom
- Top Floor Apartment
- Open-Plan Kitchen
- Wood Floors In Reception
- Period Conversion
- Great Location

Sutherland Street, London, SW1V



Total area (approx): 34.76 sq m (374 sq. ft)