



Queens Road, SW19

£550,000

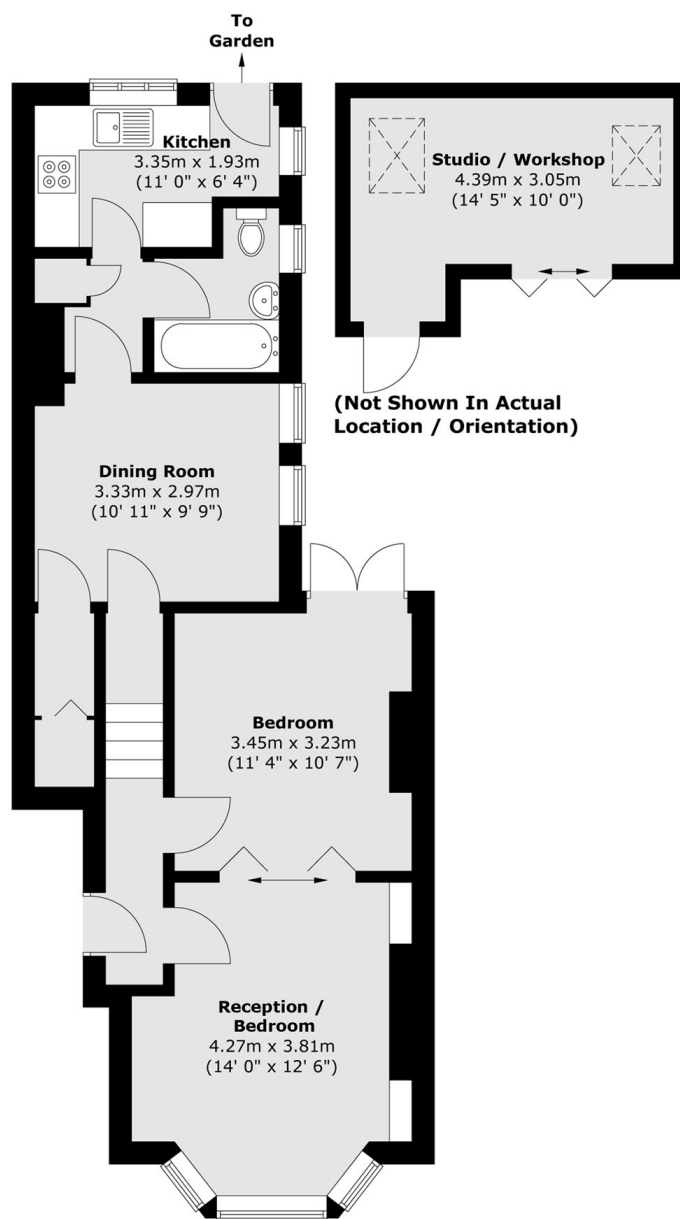
A one/two bedroom ground floor Edwardian conversion, complete with an large studio/ workshop, with a mature front and rear private garden, off street parking, share of the freehold and ability to significantly extend.

Ideally located with excellent transport connections to central London and beyond, with Wimbledon Town (District Line & South Western Railway) and Colliers Wood (Northern Line) around 15 minutes' walk and Haydons Road Thameslink line just a few minutes away. All major supermarkets are close by, with the Wandle River less than 5 minutes' walk and South Park Gardens around fifteen.

Features

- One/ Two Bedroom
- Extensive Period Features
- Ground Floor
- Share Of Freehold
- Off Street Parking
- Large Studio/ Workshop

Queens Road, London, SW19



Total area (approx.) : 56.6 sq. m (609 sq. ft)
Total Studio / Workshop area (approx.) : 11 sq. m (118 sq. ft)