

Hume Way

Ruislip • Middlesex • HA4 8AT
Offers In Excess Of: £350,000



coopers
est 1986

Hume Way

Ruislip • Middlesex • HA4 8AT

This well-presented second floor three bedroom, two bathroom apartment comes to the market with no onward chain, offering an ideal opportunity for first-time buyers, investors, or those looking to upsize. The property boasts a bright and spacious living room, a fitted kitchen, and three well proportioned bedrooms, including a generous principal bedroom with an ensuite. Residents benefit from gated parking and well-maintained communal areas, providing both security and convenience. Perfectly positioned in Ruislip, the apartment is within easy reach of both Eastcote and Ruislip Manor High Streets, offering a superb selection of shops, cafes, and transport links, as well as Highgrove Gym and the highly regarded Bishop Ramsey School.

No onward chain

Three double bedrooms

Two modern bathrooms

Spacious living room

Fitted kitchen area

Gated residents parking

Well-kept communal areas

Convenient Ruislip location

Close to tube links

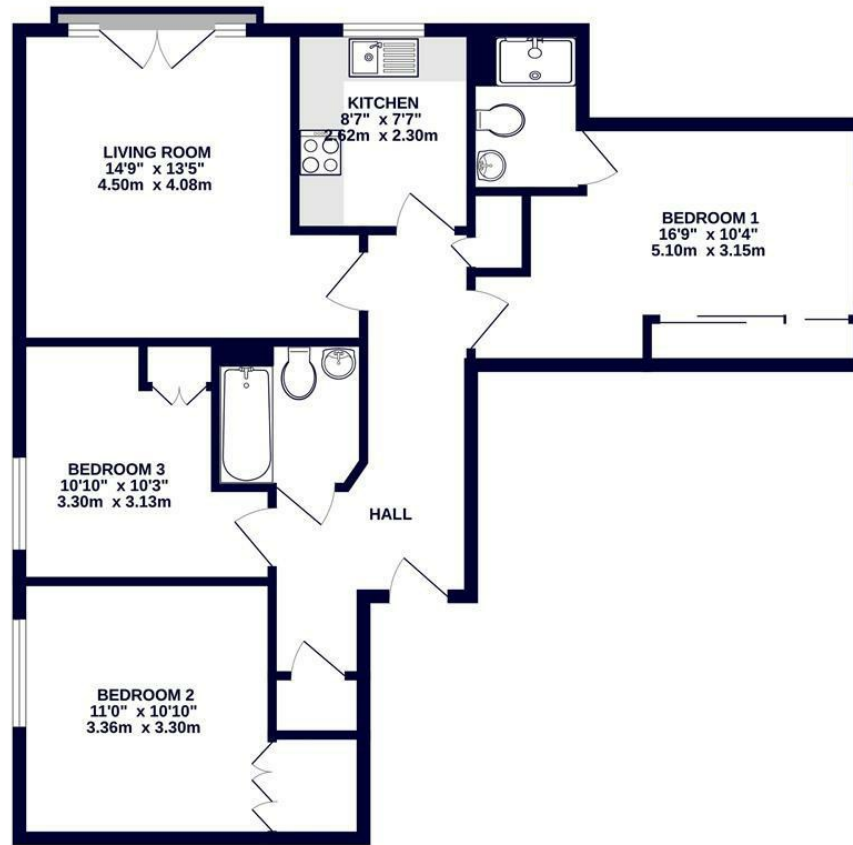
Catchment for outstanding schools

These particulars are intended as a guide and must not be relied upon as statements of fact. Your attention is drawn to the Important Notice on the last page.





2ND FLOOR
811 sq.ft. (75.4 sq.m.) approx.



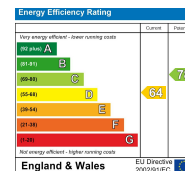
TOTAL FLOOR AREA : 811 sq.ft. (75.4 sq.m.) approx.

Whilst every attempt has been made to ensure the accuracy of the floorplan contained here, measurements of doors, windows, rooms and any other items are approximate and no responsibility is taken for any error, omission or mis-statement. This plan is for illustrative purposes only and should be used as such by any prospective purchaser. The services, systems and appliances shown have not been tested and no guarantee as to their operability or efficiency can be given.
Made with Metropix 12025



126-128 High Street, Ruislip,
Middlesex, HA4 8LL
ruislipsales@coopersresidential.co.uk

CoopersResidential.co.uk



Important Notice: These particulars, whilst believed to be accurate are set out as a general outline only for guidance and do not constitute any part of an offer or contract. Intending purchasers should not rely on them as statements or representation of fact, but must satisfy themselves by inspection or otherwise has the authority to make or give any representation or warranty in respect of the property.