



Peartree Way, SE10

£531 Per week

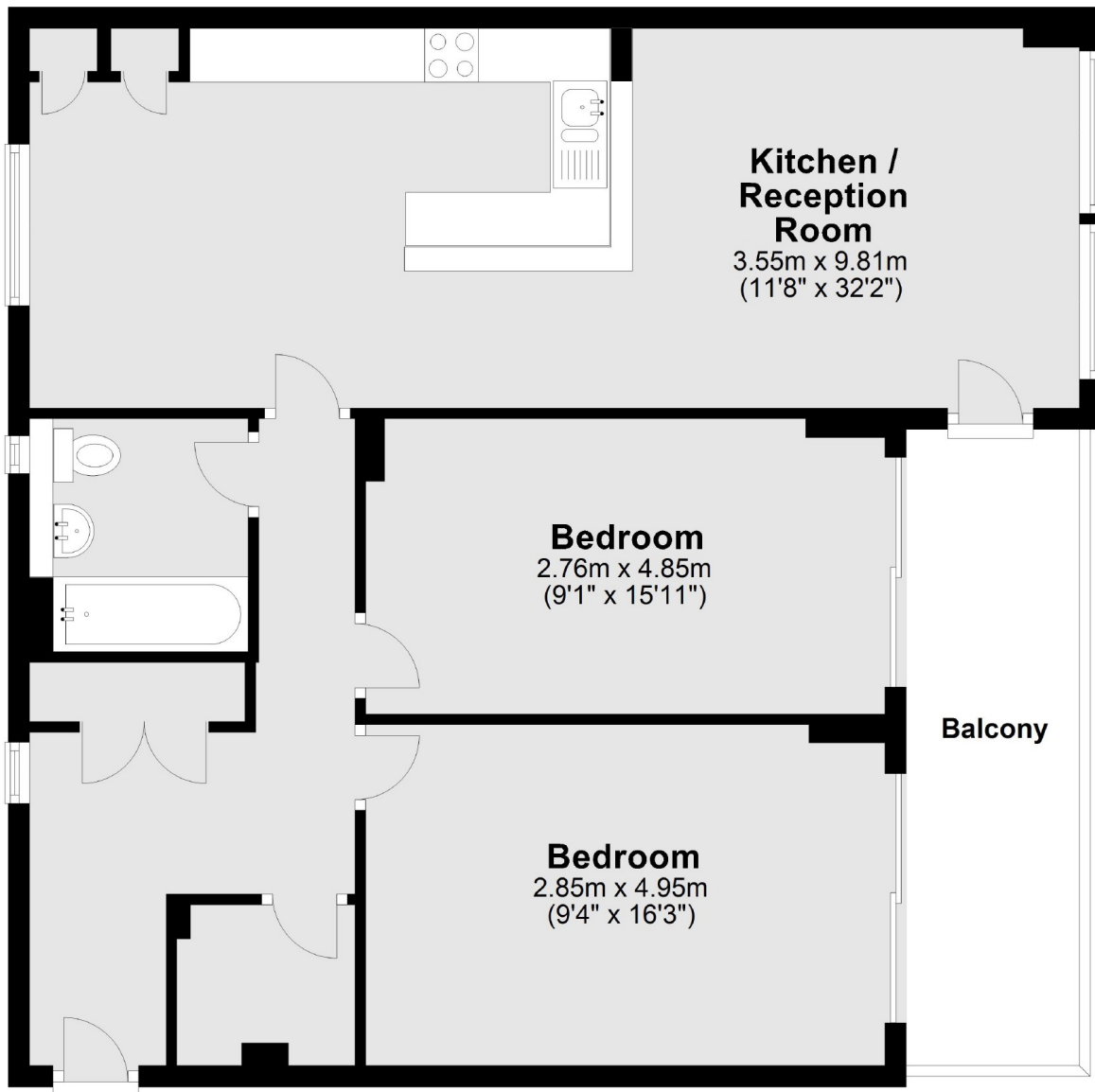
Well presented two bedroom apartment within a secure development features hardwood flooring throughout, two double bedrooms, large open plan living space and private balcony.

The apartment is located within walking distance of the O2 which hosts a wide selection of bars, restaurants and cinema, The Emirates cable car is also nearby. North Greenwich tube station provides links to Canary Wharf and London Bridge. Charlton and Westcombe Park overground. Greenwich Millennium Village features an abundance of landscaped green areas and riverside walkways.

Features

- Two Bedroom
- One Bathroom
- Open Plan Living
- Hardwood Flooring
- Private Balcony
- Off Site Concierge

Peartree Way,
London, SE10



Main area: Approx. 84.0 sq. metres (904.3 sq. feet)
Plus balconies, approx. 10.4 sq. metres (111.9 sq. feet)

Dexters

Greenwich
275 Greenwich High Road
Greenwich
London
Lettings
020 8815 2216

Energy Rating: B. We aim to make our particulars both accurate and reliable. However they are not guaranteed; nor do they form part of an offer or contract. If you require clarification on any points then please contact us, especially if you're traveling some distance to view. Please note that appliances and heating systems have not been tested and therefore no warranties can be given as to their good working order.

 **RICS** | Regulated
Estate Agent
and Letting Agent

dexters.co.uk