



*jordan fishwick*

37 Sandhurst Drive, SK9 2GP  
Guide Price £585,000





## Sandhurst Drive Wilmslow SK9 2GP

Guide Price £585,000



This impressive and contemporary detached family home is situated within the extremely popular 'Villas' development. The EXTENDED accommodation must be viewed in order to avoid disappointment. The downstairs accommodation comprises in brief: Entrance hallway, downstairs W.C., bay fronted living room with gas fire, double doors leading to the separate dining room which has further french doors to rear gardens and additional access to the kitchen. The extended kitchen diner has a large central island unit and space for a dining room table and chair set and Upvc double glazed patio doors to the rear garden. Useful utility room offering additional storage. To the first floor the accommodation comprises: Stairs/landing, master bedroom with contemporary fitted furniture and refitted en-suite shower room, three further attractive bedrooms and a refitted family bathroom suite. To the front there is a driveway which provides off road parking and leads to the single integral garage. The garage offers versatile storage and has space for a tumble dryer and washing machine. To the rear there is a well tended garden which is mainly laid to lawn with stone paved patio area offering an ideal entertaining space. Internal viewing essential.





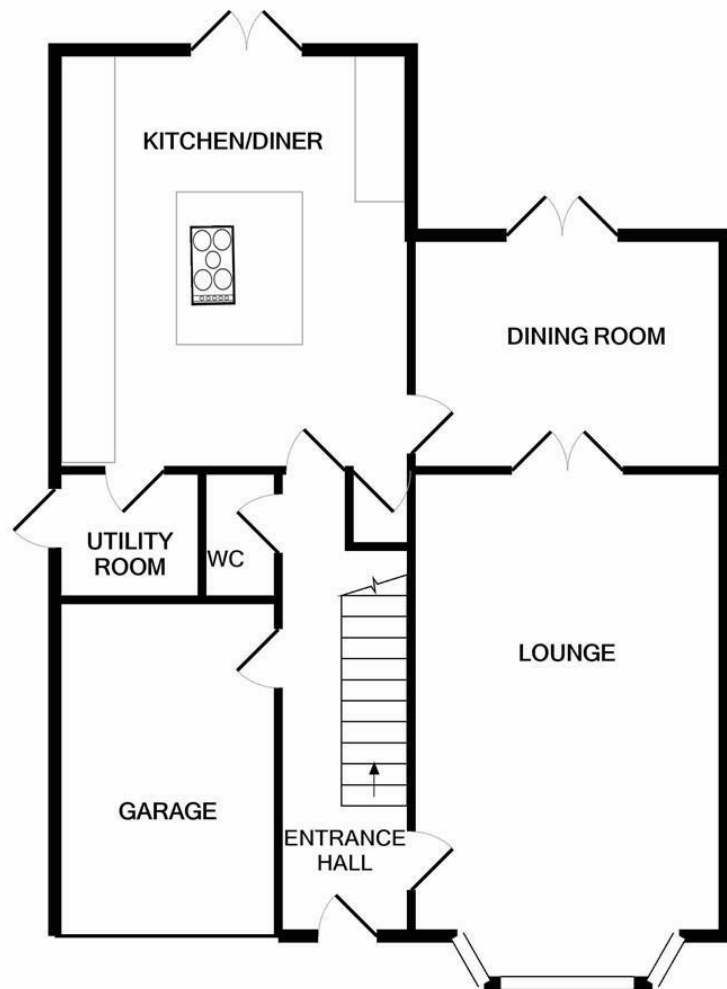


- Popular 'Villas' Development
- Four double bedrooms
- Detached
- Downstairs W.C
- Extended Kitchen
- Great Garden
- Garage and Off Road Parking
- Close to local amenities

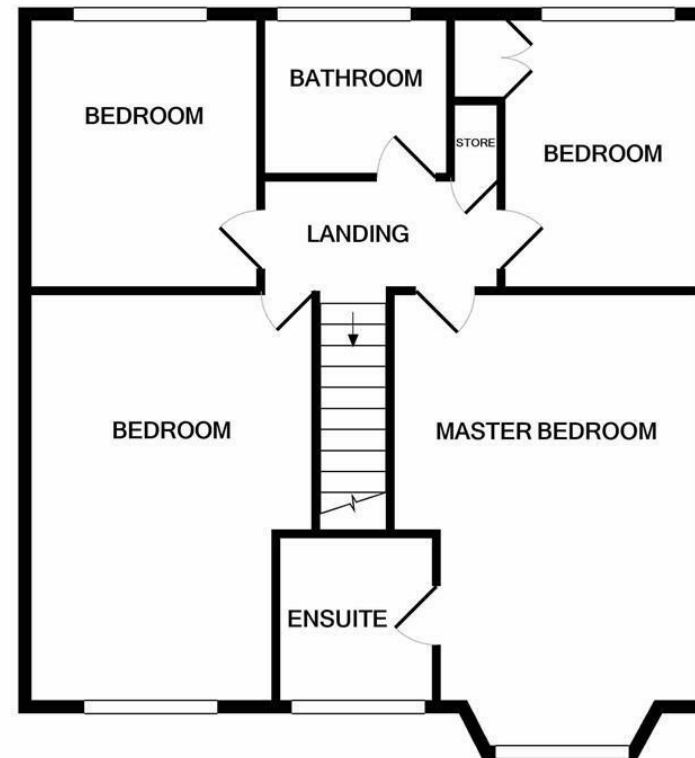


Energy Efficiency Rating		
	Current	Potential
Very energy efficient - lower running costs		
(92 plus) <b>A</b>		
(81-91) <b>B</b>		
(69-80) <b>C</b>		
(55-68) <b>D</b>		
(39-54) <b>E</b>		
(21-38) <b>F</b>		
(1-20) <b>G</b>		
Not energy efficient - higher running costs		
<b>England &amp; Wales</b>		EU Directive 2002/91/EC





GROUND FLOOR



1ST FLOOR

Measurements are approximate. Not to scale. Illustrative purposes only  
Made with Metropix ©2022



These particulars are believed to be accurate but they are not guaranteed and do not form a contract. Neither Jordan Fishwick nor the vendor or lessor accept any responsibility in respect of these particulars, which are not intended to be statements or representations of fact and any intending purchaser or lessee must satisfy himself by inspection or otherwise as to the correctness of each of the statements contained in these particulars. Any floorplans on this brochure are for illustrative purposes only and are not necessarily to scale.

Offices at: Chorlton, Didsbury, Disley, Hale, Glossop, Macclesfield, Manchester Deansgate, Manchester Whitworth Street, New Mills, Sale, Wilmslow and Withington

36-38 Alderley Road, Wilmslow SK91JX  
**01625 532000**

wilmslow@jordanfishwick.co.uk  
www.jordanfishwick.co.uk