



Knutsford
The Hill, Parkfield Road



Knutsford, WA16 8NP
Parkfield Road
£650,000



The Property

Offered to the market with no onward chain, this beautifully appointed and deceptively spacious two-bedroom apartment has been much improved and improved over the years to provide light and flexible living accommodation. Situated on one of Knutsford's premier roads, The Hill offers an inclusive lifestyle with no age restrictions making this development an ideal choice for a range of buyers.

The apartment is located at the rear of the building, boasting stunning panoramic views over the immaculately maintained communal gardens. Particular mention must be made of the large living dining room with dual aspect allowing floods of natural daylight and sliding doors opening to a Juliet balcony. The property further benefits from a newly fitted modern kitchen with quality integrated appliances, a large principal bedroom with fitted wardrobes and en-suite, and secure allocated underground parking.

The property is approached via a sweeping driveway leading to both underground and visitor parking. The communal entrance includes a modern lift, providing easy access to all floors. The grounds are a true delight, featuring communal lawns and various seating areas bordered by mature trees and feature planning. NB: We understand the annual service charge to be £4,673.65 per annum.

Directions

From Knutsford Town Centre turn down Adams Hill (A537) passing the rail station on your left. At the next lights continue straight onto Chelford Road. After passing The Legh Arms public house turn right into Legh Road. Take the left turn into Parkfield Road where the driveway entrance to The Hill will be found on your right.

- Immaculately presented 1st floor apartment
- Situated in a sought after Knutsford town centre location
- Spacious living accommodation
- Breakfast kitchen with integrated appliances
- Two generous bedrooms
- Two bathrooms (one en-suite)
- Stunning communal gardens
- Underground parking & visitor parking

Postcode – WA16 8NP

Tenure – Leasehold

Service Charge: £4,673.65 pa

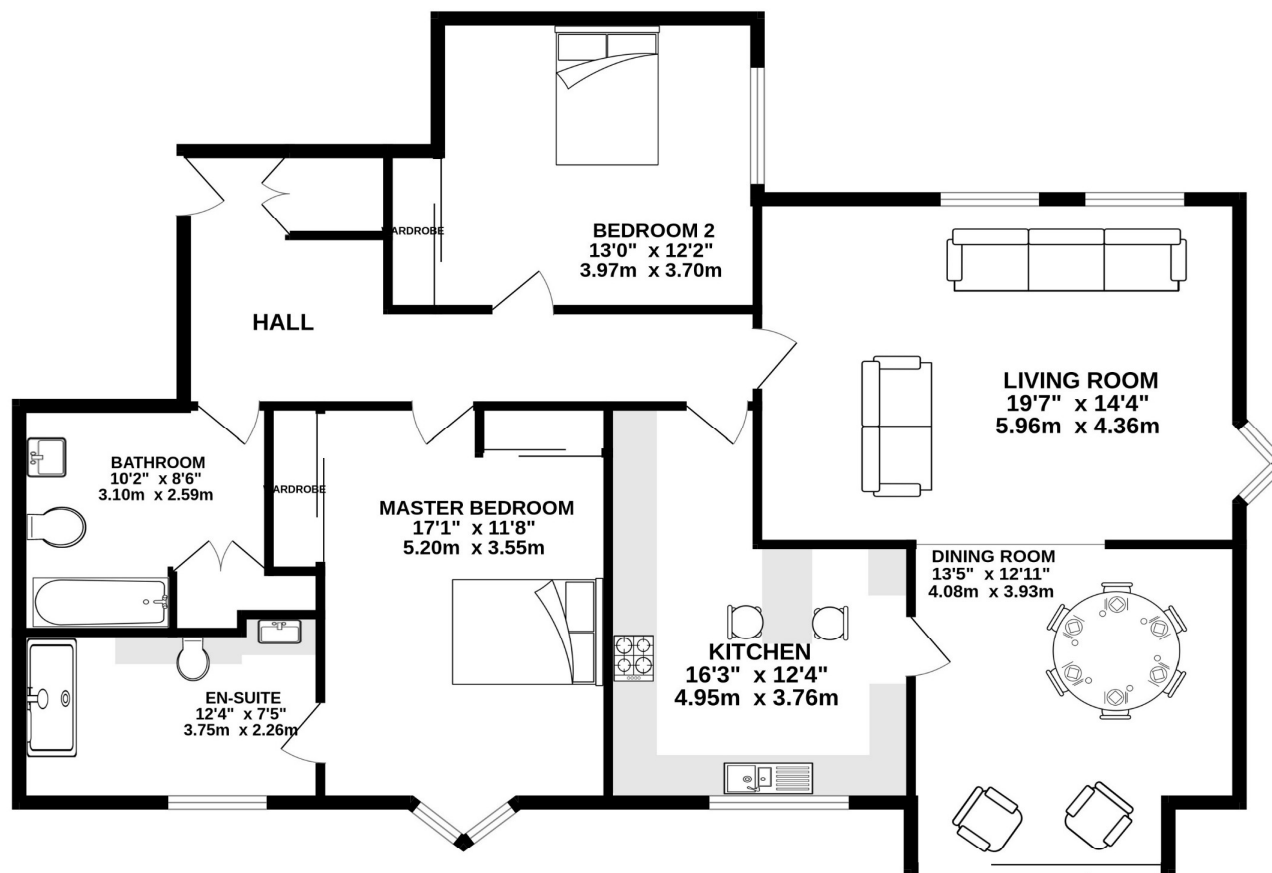
Local Authority – Cheshire East

Council Tax – Band E

EPC - C



FIRST FLOOR
1389 sq.ft. (129.0 sq.m.) approx.



TOTAL FLOOR AREA: 1389 sq.ft. (129.0 sq.m.) approx.

Whilst every attempt has been made to ensure the accuracy of the floorplan contained here, measurements of doors, windows, rooms and any other items are approximate and no responsibility is taken for any error, omission or mis-statement. This plan is for illustrative purposes only and should be used as such by any prospective purchaser. The services, systems and appliances shown have not been tested and no guarantee as to their operability or efficiency can be given.
Made with Metropix ©2026

103 King Street, Knutsford, Cheshire, WA16 6EQ

01565 654 000

E: info@irlamsestateagents.co.uk

www.irlamsestateagents.co.uk

I1021_ Printed by Ravensworth 01670 713330

Irlams (Estate Agents) Ltd for themselves and for the vendors or lessors of this property whose agents they give notice that:

- The particulars are set out as a general outline only for the guidance of intending purchasers or lessees, and do not constitute, nor constitute part of, an offer or contract;
- All descriptions, dimensions, references to condition and necessary permissions for use and occupation, and other details are given in good faith and are believed to be correct but any intending purchasers or lessees should not rely on them as statements or representations of fact, but must satisfy themselves by inspection or otherwise as to the correctness of each of them;
- No person in the employment of Irlams (Estate Agents) Ltd has any authority to make or give any representation or warranty whatsoever in relation to this property.
- We believe the information above to be accurate at the point it was obtained however you may wish to make a final check with your Solicitor or with us in respect of anything above you feel crucial before you proceed with the purchase of this property.


IRLAMs
of Knutsford