



Park Road, NW8

£1,269 Per week

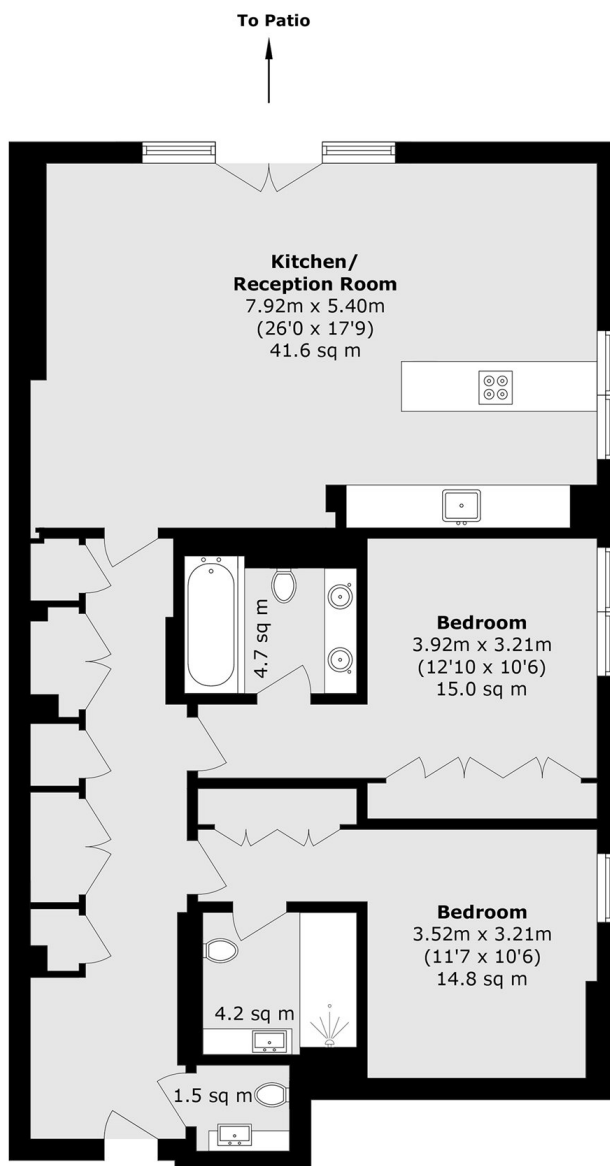
A modern two double bedroom, on the ground floor in a 24 hour portered block close to Regents Park. The property benefits from a bright reception with an open plan integrated kitchen, two double bedrooms both with en suite bathrooms, private patio and guest WC.

Atrium Apartments is located on Park Road in between St Johns Wood and Baker Street giving resident great transport links into the city. Regents Park and Primrose Hill are also a short walk away.

Features

- Two Double Bedrooms
- Open Plan Kitchen
- Great Location
- 24 Hour Concierge
- Private Patio
- Off Street Parking

Park Road, London, NW8



Total area (approx.): 105.9 sq. m (1139.9 sq. ft)