



Violet Road, Bow E3
London

£2,300 pcm



Violet Road, Bow E3

Modern and generously-proportioned two bedroom apartment with three private balconies close to DLR stations.

- Two Double Bedroom Apartment
- Spacious and Modern
- Three Private Balconies
- Third Floor with Lift
- Communal Roof Terrace
- Close to DLR Stations
- Furnished
- Available from 15th July 2026





Modern and generously-proportioned two bedroom apartment with three private balconies close to DLR stations.

Measuring nearly 900 Sq/Ft internally, this spacious third floor apartment features a bright living/dining area with a balcony, semi open-plan to a kitchen with fully integrated appliances. Both bedrooms are true doubles and enjoy their own private balconies. The property is completed by a contemporary bathroom and a large entrance hallway with useful storage spaces.

Offered furnished, it is well-presented throughout and the perfect next home for a couple or two professional sharers.

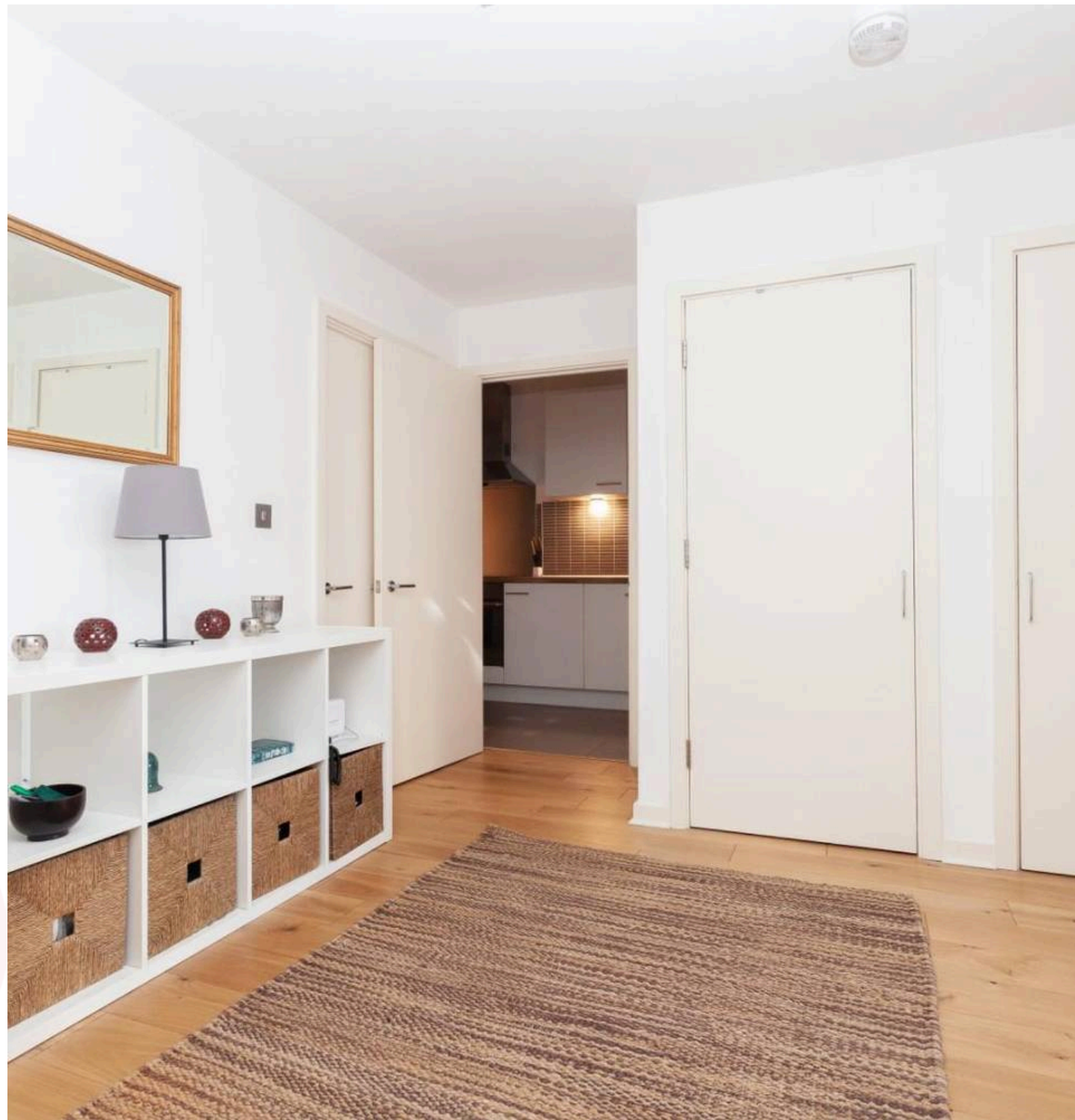
Maestro Apartments is a secure development with a lift and residents benefit from access to a communal roof terrace with panoramic views over London and towards Canary Wharf's iconic skyline.

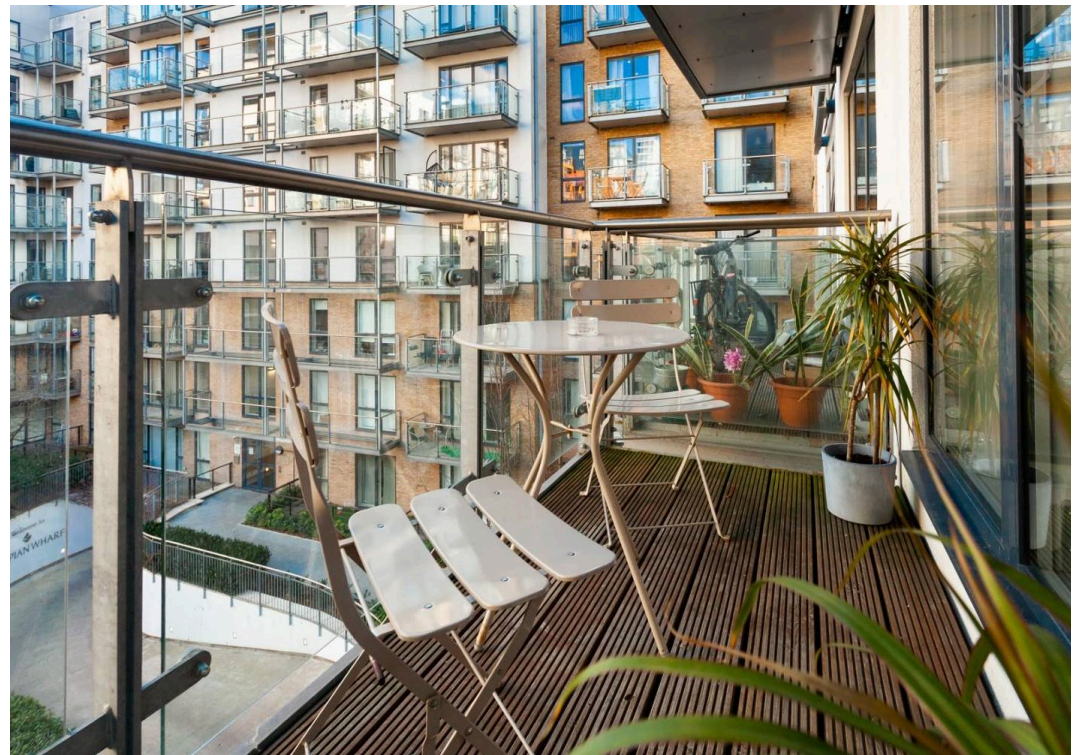
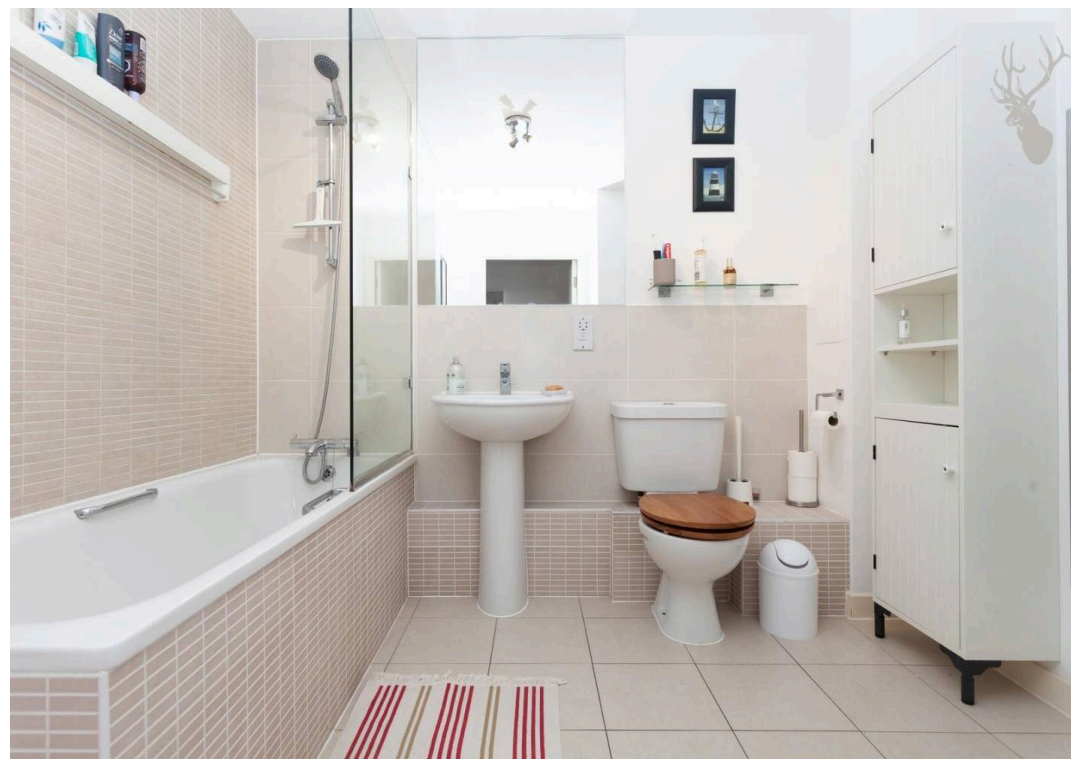
The location provides straightforward access to nearby Devons Road and Langdon Park DLR stations, as well as Bromley-by-Bow underground station. The property is also just moments from the Limehouse Cut and only a short walk from a supermarket, gym and a coffee shop.

Council Tax band: D

EPC Energy Efficiency Rating: B

EPC Environmental Impact Rating: B



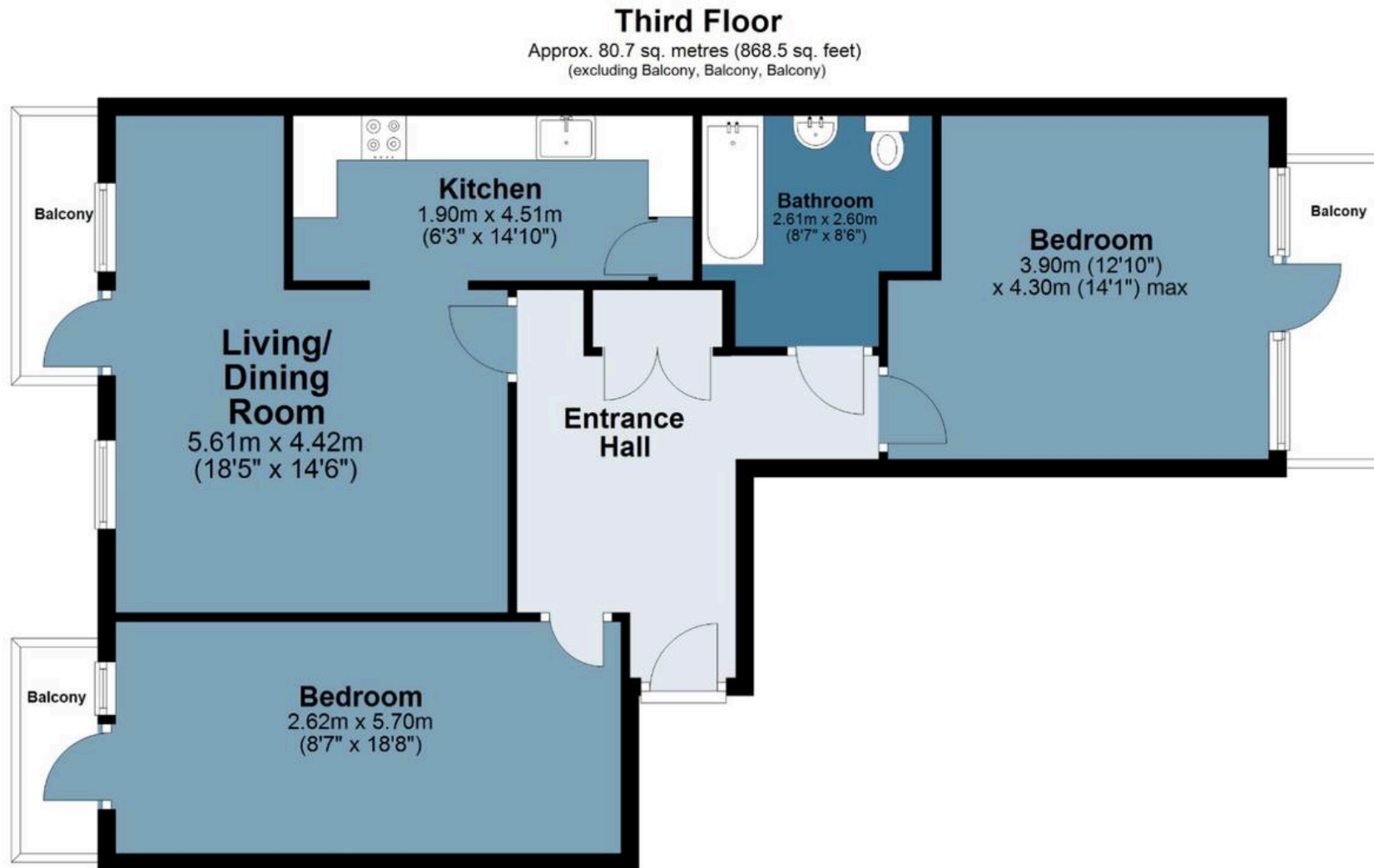




Maestro Apartments

Approx. Gross Internal Area 80.7 sq. metres (868.5 sq. feet)

BUTLER & STAG



Measurements are approximate and for illustration purposes only. While we do not doubt the accuracy and completeness, we advise you conduct a careful independent assessment of the property to determine monetary value

© @modephotouk www.modephoto.co.uk

FROM EAST LONDON ENERGY TO WEST ESSEX EASE

We Make Moving Home Easy.

At Butler and Stag, we do more than just connect London to West Essex – we make the move seamless. With offices spanning from vibrant East London to the tranquillity of West Essex, we understand the nuances of each area and the journey people take between them. Our marketing goes beyond standard listings, showcasing every property with precision, creativity, and reach that others simply can't match. Coupled with an unparalleled attention to detail, from first enquiry to final move-in, we ensure every client and customer feels informed, supported, and confident. Simply put, we do the little things that make a big difference, setting us apart in every step of the property experience.



LONDON STRATFORD SOUTH WOODFORD BUCKHURST HILL LOUGHTON EPPING BEYOND

Like what you see? Let's talk

Book your **FREE** valuation now



020 8102 1236

london@butlerandstag.com

508 Roman Road, Bow, London, E3 5LU

butlerandstag.uk

IMPORTANT NOTICE - These particulars have been prepared in good faith and they are not intended to constitute part of an offer or contract. We have not performed a structural survey on this property and the services, appliances and specific fittings have not been tested. All photographs, measurements, floor plans and distances referred to are given as a guide and should not be relied upon.

BUTLER & STAG

