



Parkland Walk, SW6

£1,730 Per week

Dexters



Parkland Walk, SW6

An outstanding three double bedroom, three bathroom Penthouse with a private balcony located within the secure King's Road Park development.

This stunning residence offers over 1,500 sq ft of beautifully designed internal space, complemented by more than 350 sq ft of private terrace area. The bright and spacious reception and dining room features floor-to-ceiling windows and glass sliding doors that open onto a south-facing terrace, flooding the space with natural light. The fully fitted, integrated kitchen is equipped with premium Miele appliances, seamlessly combining contemporary style with exceptional functionality.

Accommodation comprises three generous double bedrooms, all with built-in wardrobes. Two bedrooms include luxurious en suite marble bath/shower rooms, while all rooms offer direct access to a terrace. A stylish, contemporary family bathroom completes the layout.

Residents enjoy access to an array of exceptional on site amenities, including a swimming pool, steam room, fully equipped gym, massage services, virtual golf and games room, cinema, meeting rooms, private dining facilities, and an elegant residents' lounge set around an atrium courtyard garden.

Features

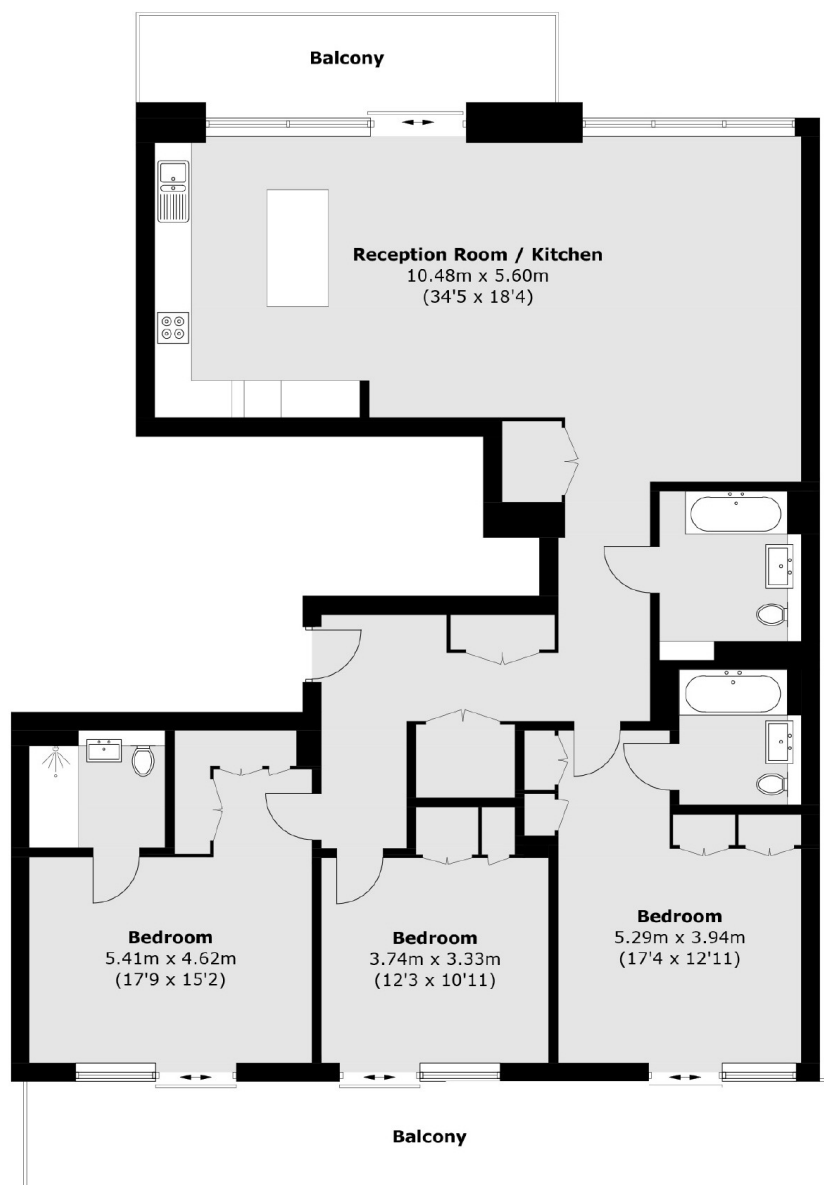
- Three Double Bedroom
- Three Bathrooms
- Unfurnished
- Swimming Pool
- Private Balcony
- 24-Hour Concierge







Parkland Walk, London, SW6



Tenth Floor

Total area (approx.): 144.1 sq. m (1,551.1 sq. ft)
Balcony: 33.7 sq. m (362.7 sq. ft)