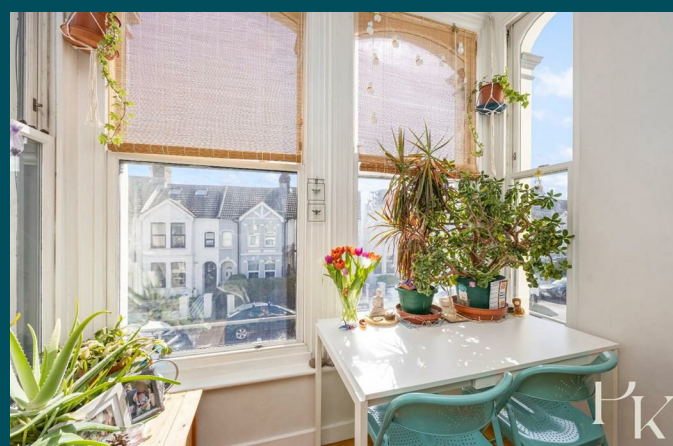
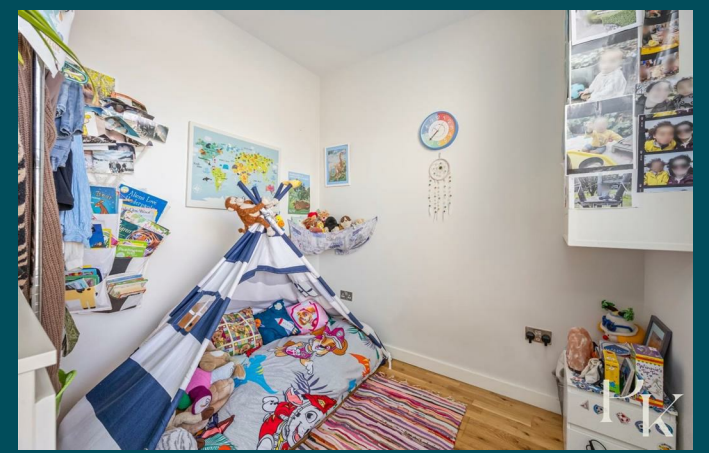




Flat 2, Victoria House
Norway Road
Portslade, BN41 1GG



Flat 2, Victoria House Vale Road

Portslade, BN41 1GG

Offers over £190,000

This beautifully presented one-bedroom, first-floor apartment offers stylish, contemporary living in a highly convenient Portslade location, just moments from Portslade Railway Station and a vibrant range of local amenities.

Positioned within a well-maintained block, the property opens into a bright and spacious open-plan kitchen and living area. A striking bay window draws in an abundance of natural light, enhancing the sense of space, while the layout provides a defined yet sociable living and dining area. The sleek, modern kitchen is fitted with integrated appliances and streamlined cabinetry, perfectly complementing the warm wooden flooring and neutral décor throughout.

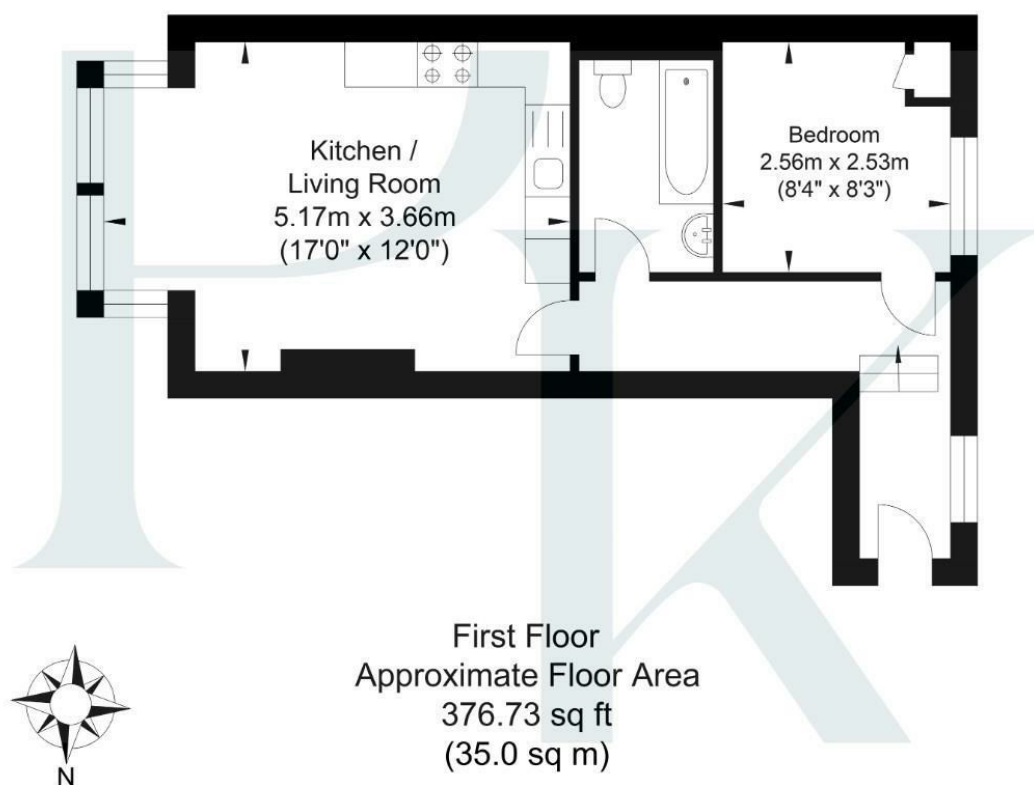
The bedroom is generously proportioned, with fitted storage and a large window that creates a calm and airy retreat. There is a contemporary bathroom finished to a high standard with stylish dark tiling, and quality fittings.

Ideally located, the apartment is just a short walk from Portslade Railway Station, offering excellent links to Brighton, London, and beyond. Boundary Road's popular selection of shops, cafés, and restaurants are close by, while Hove seafront is also within easy reach for coastal walks and leisure.

Perfect for first-time buyers or investors, this attractive home combines modern comfort, practical layout, and an exceptionally convenient location.



Vale Road



Approximate Gross Internal Area = 35.0 sq m / 376.73 sq ft
Illustration for identification purposes only, measurements are approximate, not to scale.

Energy Efficiency Rating	
Current	Potential
Very energy efficient - lower running costs	
(92 plus) A	
(81-91) B	
(69-80) C	
(55-68) D	
(39-54) E	
(21-38) F	
(1-20) G	
Not energy efficient - higher running costs	
England & Wales	EU Directive 2002/91/EC

Environmental Impact (CO ₂) Rating	
Current	Potential
Very environmentally friendly - lower CO ₂ emissions	
(92 plus) A	
(81-91) B	
(69-80) C	
(55-68) D	
(39-54) E	
(21-38) F	
(1-20) G	
Not environmentally friendly - higher CO ₂ emissions	
England & Wales	EU Directive 2002/91/EC

Pearson
Keehan