



Deverell Street, SE1

£440,000

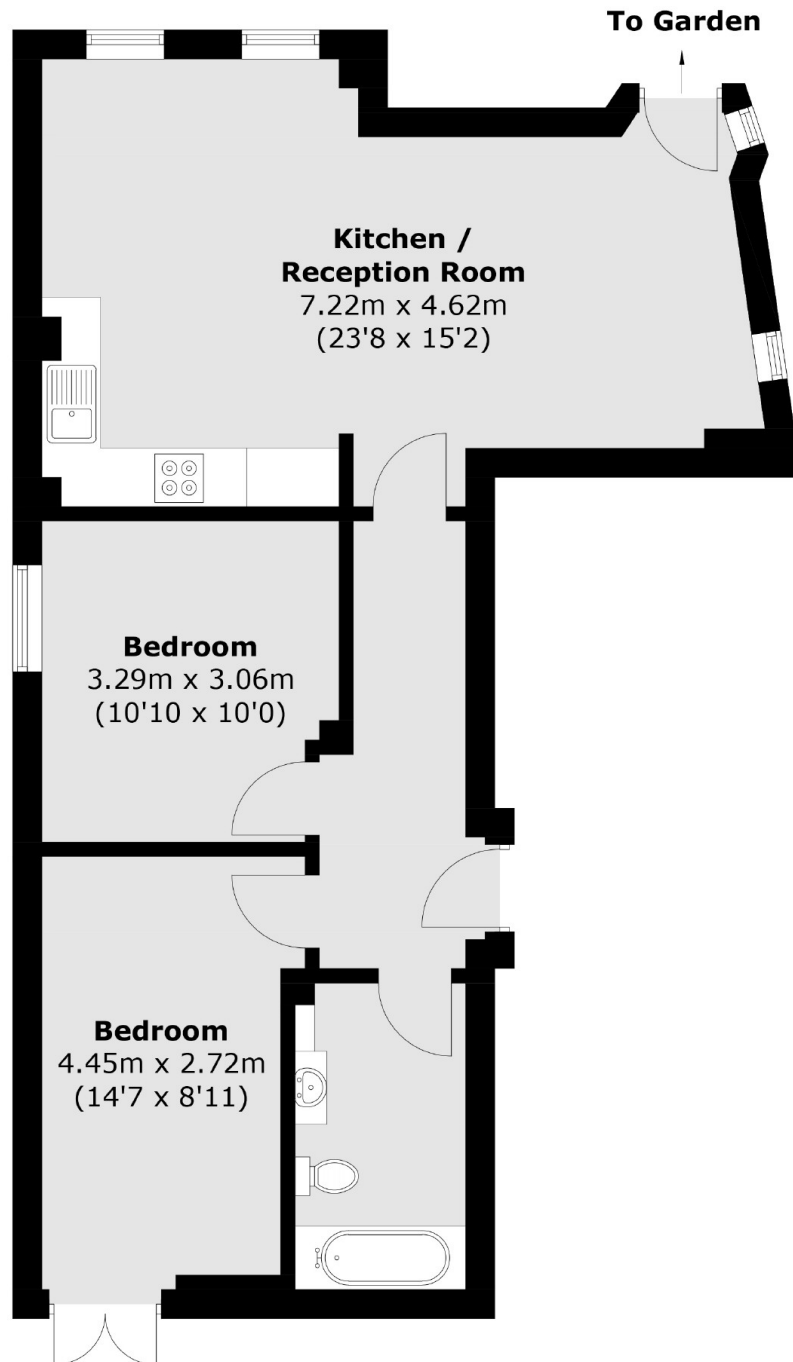
Offers in excess of £440,000. A highly attractive almost 700 sq ft ground floor flat with two generous double bedrooms, a large family bathroom, a very spacious open plan living room and kitchen, plus access to two private terraces and a large separate storage space in the basement. Chain free sale.

The Aspect is enviably located on Spurgeon Street, tucked back off Great Dover Street, moments from Tabard Gardens and Trinity Church Square. London Bridge and Borough Stations are both nearby, along with Borough Market and the South Bank.

Features

Offers in excess of £440,000
Large Separate Storage Space
Two Double Bedrooms
Two Terraces
Open Plan Living Space
Valid EWS1 Form
Chain Free Sale

Deverell Street,
London, SE1



Total area (approx.): 64.3 sq. m (692.1 sq. ft)

Dexters

London Bridge
54 Borough High Street
London
SE1 1XL

Sales
020 7650 5 100

Energy Rating: . We aim to make our particulars both accurate and reliable. However they are not guaranteed; nor do they form part of an offer or contract. If you require clarification on any points then please contact us, especially if you're traveling some distance to view. Please note that appliances and heating systems have not been tested and therefore no warranties can be given as to their good working order.

 **RICS** | Regulated
Estate Agent
and Letting Agent

dexters.co.uk