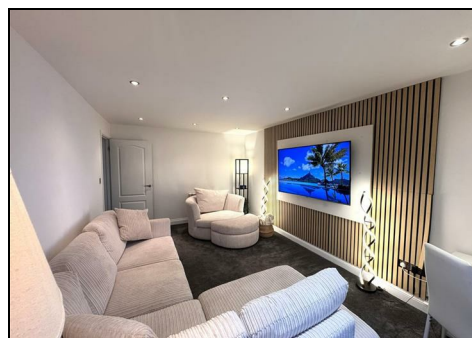


Lakeview Court Trenance Lane, Newquay, Cornwall TR7 2HY



Modern second floor 2 bedroom apartment with garage and views of Newquay Boating Lake.

£1,200 PCM



The property is unfurnished and is available from now for a long term let. The deposit is equivalent to a month's rent.

Due to a block restriction, pets are not accepted.

To arrange a viewing on this or any of our other properties please complete the Tenancy Application Form on the Start and Co home page at www.starts.co.uk.

Energy Efficiency Rating		Current	Potential
Very energy efficient - lower running costs			
(92 plus) A			
(81-91) B			
(69-80) C			
(55-68) D			
(39-54) E			
(21-38) F			
(1-20) G			
Not energy efficient - higher running costs			
England & Wales		EU Directive 2002/91/EC	

Environmental Impact (CO ₂) Rating		Current	Potential
Very environmentally friendly - lower CO ₂ emissions			
(92 plus) A			
(81-91) B			
(69-80) C			
(55-68) D			
(39-54) E			
(21-38) F			
(1-20) G			
Not environmentally friendly - higher CO ₂ emissions			
England & Wales		EU Directive 2002/91/EC	

