



Riverton Apartments  
132 Wandsworth Bridge Road, SW6

CHESTERTONS





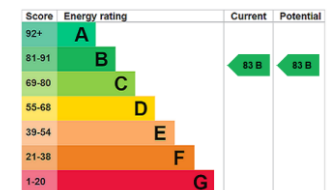
A beautifully appointed second floor flat, benefitting from west facing views across to South Park, Hurlingham Park and the nearby Peterborough Estate.

Extending to over 550 square feet, the property comprises of a good size entrance hall, large & modern kitchen, living & dining area, separate double bedrooms with bespoke fitted wardrobes and window seat, offering westerly views over the surrounding landscape. The home also benefits from a good size three-piece suite with shower over bath.

The property is in the sought after 'Bury Triangle' area of Sands End just behind the amenities of Wandsworth Bridge Road, adjacent to the well regarded 'Peterborough Estate'. Further amenities and transport links can be found almost equidistance at both Parsons Green and Imperial Wharf.

- Large second floor apartment
- Open plan living, kitchen & dining
- One bedroom, one bathroom
- Westerly aspect from Kitchen offering superb natural light

Offers in excess of  
£475,000



**Tenure:** Share of Freehold - 113 Years Remaining.  
**Service Charge:** £3200 PA Approx.  
**Ground Rent:** To be confirmed.  
**Local Authority:** Hammersmith & Fulham  
**Council Tax Band:** D

*Chestertons Fulham Road Sales*

654 Fulham Road  
 Fulham  
 London  
 SW6 5RU

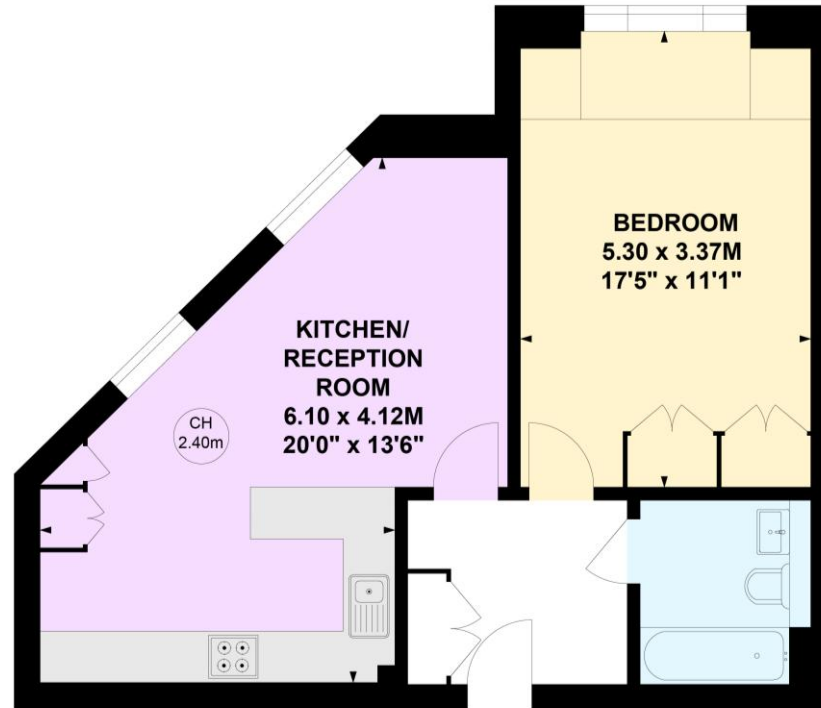
fulham@chestertons.co.uk  
 020 7384 9898

# Wandsworth Bridge Road, SW6

Approximate gross internal area

52.00 sq m / 560 sq ft

Key :  
CH - Ceiling Height



## Second Floor

This plan is not to scale and must be used as layout guidance only. All measurements and areas are approximate and should not be relied upon to provide accurate information. This plan must not be relied upon when making property valuations, design considerations or any other such relevant decisions. We accept no responsibility or liability (whether in contract, tort or otherwise) in relation to any loss whatsoever arising from or in connection with any use of this plan or the adequacy, accuracy or completeness of it or any information within it.

Chesterton UK Services Limited trading as Chestertons for themselves and for the vendor of this property whose agents they are, give notice that (i) these particulars do not constitute any part of an offer or contract, (ii) all statements contained within these particulars are made without responsibility on the part of Chestertons or the vendor, (iii) whilst made in good faith, none of the statements contained within these particulars are to be relied upon as a statement or representation of fact, (iv) any intending purchasers must satisfy themselves by inspection or otherwise as to the correctness of each of the statements contained within these particulars, (v) the vendor does not make or give either Chestertons or any person in their employment any authority to make or give representation or warranty whatsoever in relation to this property. Wide angle lenses may be used. ©Copyright Chestertons | Chesterton UK Services Limited | Registered Office 40 Connaught Street, Hyde Park, London W2 2AB Registered Company Number 05334580.



This paper is  
100% recyclable