

Cedar Way, TW16

£345,000

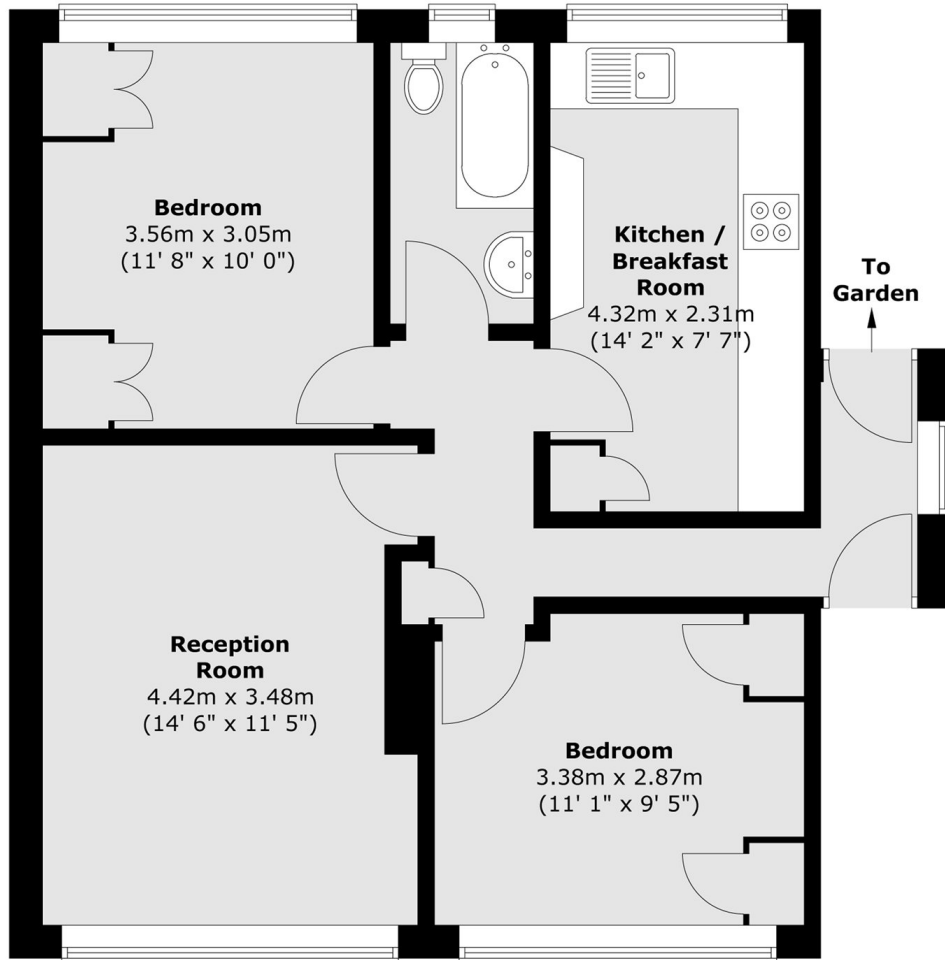
A stunning first floor two-bedroom maisonette, impeccably maintained and finished to an exceptional standard, featuring sleek modern interiors, stylish details, built in storage, side access, and a refined, move in ready appeal. Early viewing recommended.

This is located on a cul-de-sac and within less than a mile of Sunbury and Upper Halliford station. This is also in close proximity of a shopping centre and services.

Features

- Maisonette
- Modern Finish
- Minimal Service Charge
- Two Bedrooms
- Outdoor storage
- Private Garden

Cedar Way, Sunbury-On-Thames, TW16



Total area (approx.) : 59.2 sq. m (637 sq. ft)