



Sworders Close, Great Hornead, Nr. Buntingford

SG9 0NT

Price Guide £995,000



[stevenoates.com](http://stevenoates.com)



## Sworders Close Great Hormead, Nr. Buntingford, Hertfordshire, SG9 0NT

An exceptional detached period home set within an outstanding 0.65 acre plot in the heart of the popular village hamlet of Great Hormead. This recently renovated family home comprises of 2 principal reception rooms, a large family kitchen with study area and a downstairs wc on the ground floor. On the first floor, there are 4 bedrooms, 2 bathrooms. The plot which has been beautifully landscaped includes a sweeping gravel driveway leading to a detached double garage, the expansive gardens include a large detached studio/home office/gym, a duck pond, large chicken run and vegetable garden with raised beds. Viewing is highly recommended to fully appreciate this fine family home.

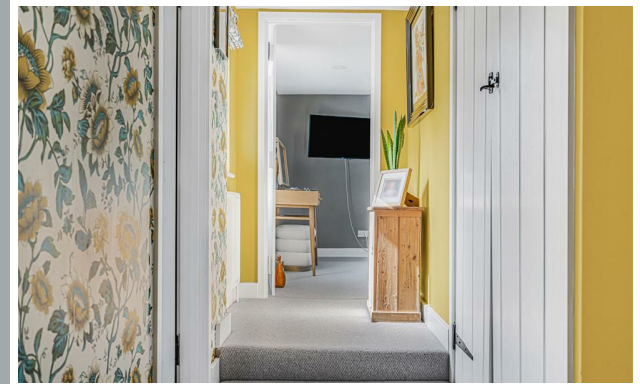
The village hamlet of Great Hormead, is nestled amongst beautiful Hertfordshire countryside, just 2.8 miles to the market town of Buntingford where you will find many local shops, restaurants, pubs, and schools. The A10 is just 3 miles away for easy commute to London and Cambridge, along with the nearby larger towns of Hertford & Ware.



70 Fore Street, Hertford, Hertfordshire, SG14 1BY



70 Fore Street, Hertford, Hertfordshire, SG14 1BY



70 Fore Street, Hertford, Hertfordshire, SG14 1BY





70 Fore Street, Hertford, Hertfordshire, SG14 1BY



70 Fore Street, Hertford, Hertfordshire, SG14 1BY



70 Fore Street, Hertford, Hertfordshire, SG14 1BY



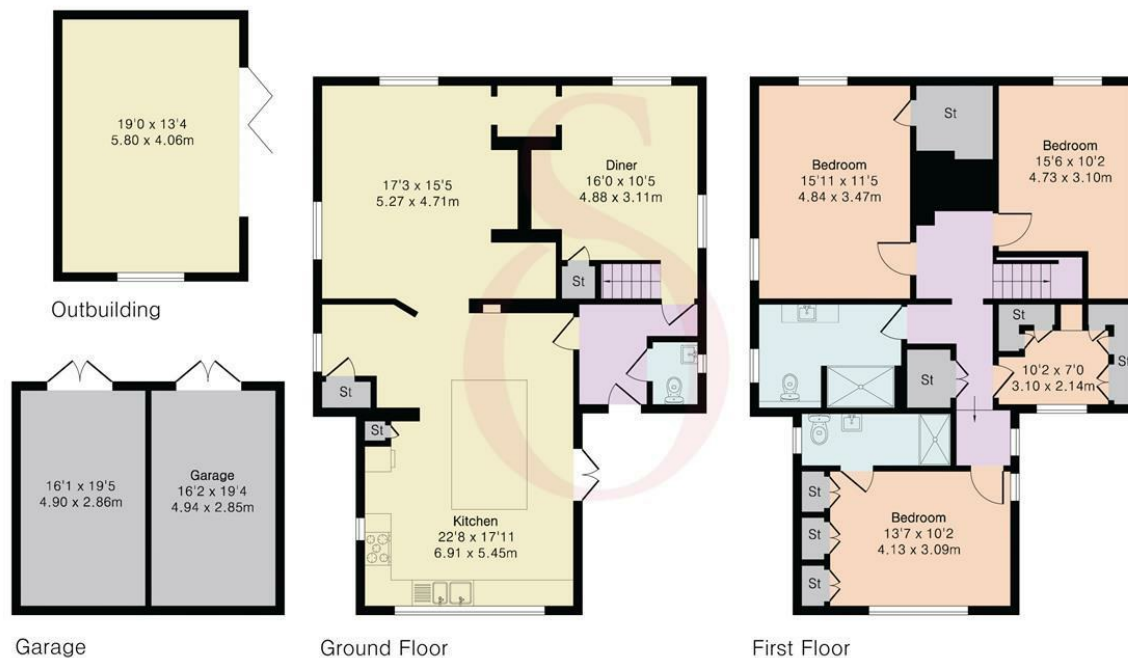
**Approximate Gross Internal Area 1828 sq ft - 170 sq m  
(Excluding Garage & Outbuilding)**

Ground Floor Area 914 sq ft – 85 sq m

First Floor Area 914 sq ft – 85 sq m

Garage Area 311 sq ft – 29 sq m

Outbuilding Area 253 sq ft – 24 sq m



Floor plan produced in accordance with RICS Property Measurement 2nd Edition. Although Pink Plan Ltd ensures the highest level of accuracy, measurements of doors, windows and rooms are approximate and no responsibility is taken for error, omission or misstatement. These plans are for representation purposes only and no guarantee is given on the total square footage of the property within this plan. The figure icon is for initial guidance only and should not be relied on as a basis of valuation.



These particulars, whilst believed to be accurate are set out as a general outline only for guidance and do not constitute any part of an offer or contract. Intending purchasers should not rely on them as statements of representation of fact, but must satisfy themselves by inspection or otherwise as to their accuracy. No person in this firm's employment has the authority to make or give any representation or warranty in respect of the property.



stevenoates.com