



Guide Price
£200,000

Leasehold

1x  1x  1x 

**Ghyll Court, Station
Road, Horsham, West
Sussex, RH13**

OVER 60?

Secure this property
for up to **59% less!**

cubitt & west
Helping you move forwards



Main features

- Central village location, within walking distance to Lintot Square
- Presented in immaculate condition
- Garage and parking
- Newly fitted modern bathroom and kitchen
- 112 years remaining on Lease
- Benefits from built in storage as well as a loft space

Accommodation

FIRST FLOOR

Hallway

Lounge/Diner: 14'7 x 13'6 (4.45m x 4.12m)

Kitchen: 7'10 x 5'1 (2.39m x 1.55m)

Bathroom: 5'6 x 5'1 (1.68m x 1.55m)

Bedroom: 11'10 x 9'7 (3.61m x 2.92m)

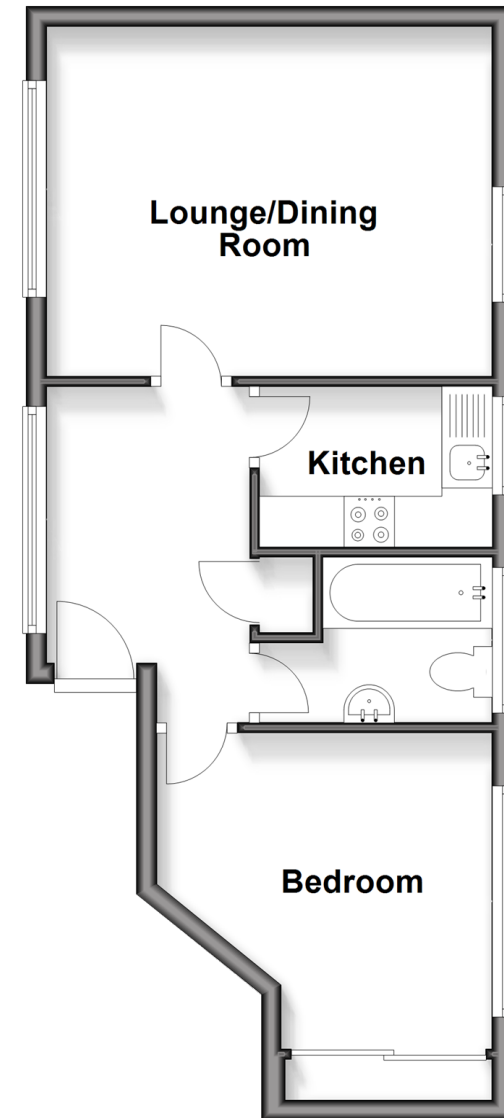
OUTSIDE

Garage en-bloc

Communal Gardens

First Floor

Approx. 40.0 sq. metres (430.7 sq. feet)



Call Southwater - 01403 731901 ■ cubittandwest.co.uk

- Legal advice should be taken to verify fixtures/fittings, planning, alterations and/or lease details
- Appliances & services are untested, dimensions are approximate and floor plans are not to scale
- Through a Homewise Home For Life Plan people aged 60+ can secure this property for up to 59% less, by purchasing a Lifetime Lease



21909650/20260310/DA/DA