

Kilmiston Avenue, TW17

£675,000

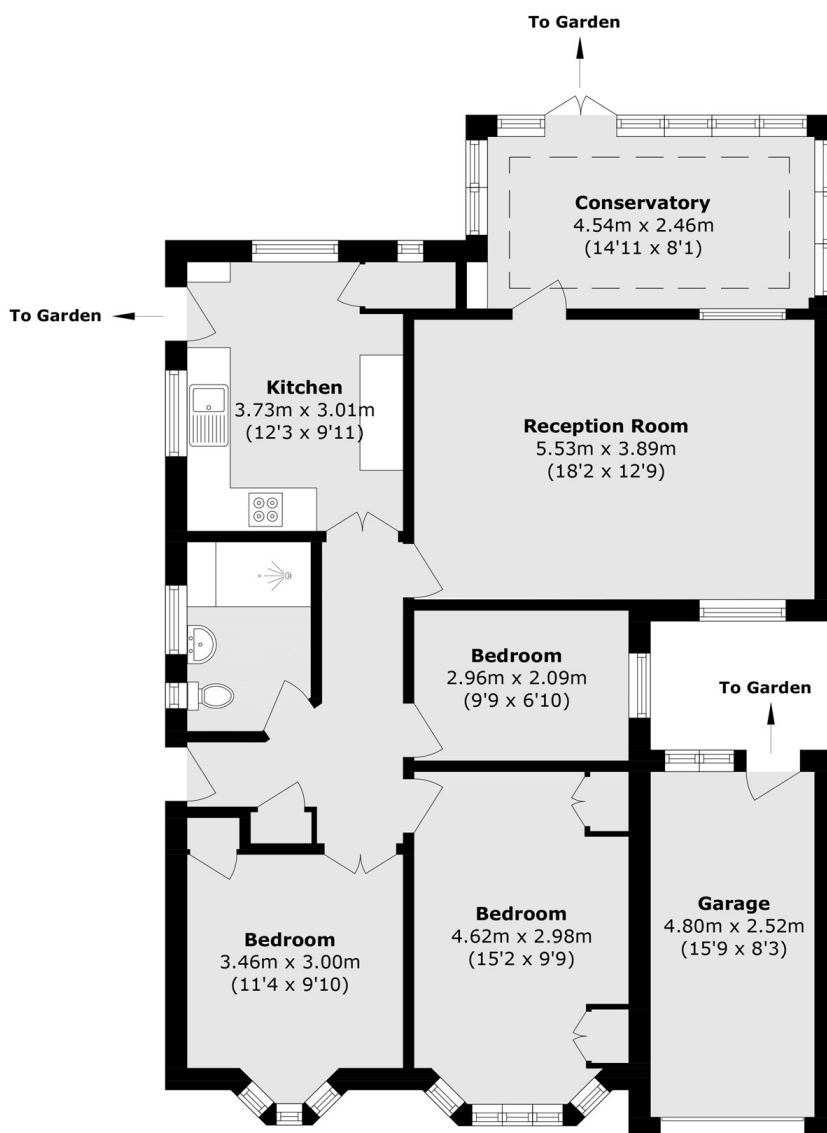
A three bedroom detached bungalow with off-street parking, a garage and a beautiful wrap around garden. This light and spacious bungalow is being sold chain free and is ideal for someone looking to downsize.

Kilmiston Avenue is a wonderful location, this quiet residential road is just around the corner from Shepperton Recreation Ground and the High Street and Station are both approximately a quarter of a mile away.

Features

- Bungalow
- Three Bedrooms
- Large Garden
- Garage
- Off-Street Parking
- No Forward Chain

Kilmiston Avenue, Shepperton, TW17



Total area (approx.): 90.0 sq. m (968.8 sq. ft)
Garage area (approx.): 10.9 sq. m (117.3 sq. ft)