

for sale

offers in excess of **£220,000**



Lower Denmark Road Ashford TN23 7SU

Situated on the popular Lower Denmark Road, this well-presented two bedroom terraced property offers spacious and versatile accommodation, making it an ideal first-time purchase or investment opportunity.



Lower Denmark Road Ashford TN23 7SU

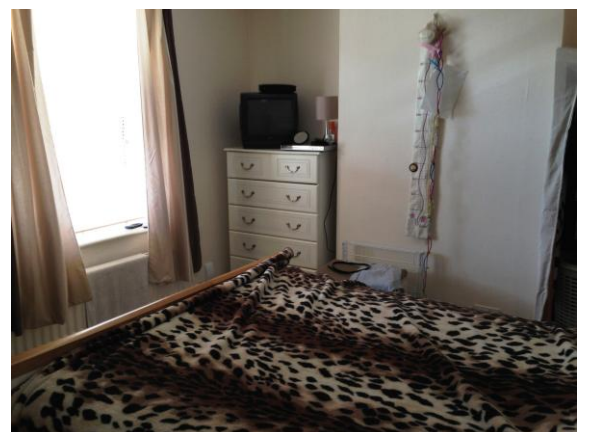
Lounge

21' 8" x 13' (6.60m x 3.96m)

Kitchen

12' 11" x 9' 4" (3.94m x 2.84m)

Bathroom



First Floor

Bedroom 1

13' 5" x 10' 5" (4.09m x 3.17m)

Bedroom 2

10' 1" x 10' 7" (3.07m x 3.23m)

Outside

Rear Garden

Garage

18' x 9' (5.49m x 2.74m)



To view this property please contact Connells on

T 01233 502020
E parkfarm@connells.co.uk

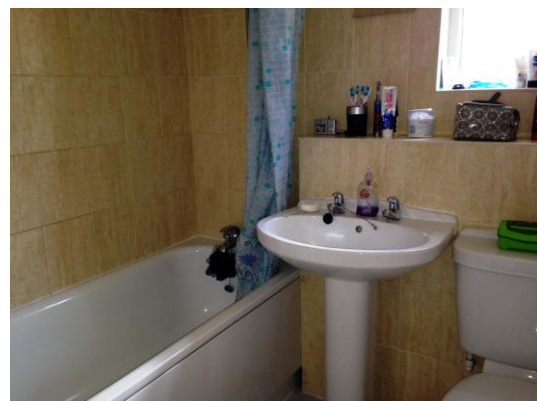
Unit 3 Moatfield Meadow Kingsnorth
ASHFORD TN23 3LU

Property Ref: PFM406910 - 0002

Tenure:Freehold EPC Rating: C

Council Tax Band: B

view this property online
connells.co.uk/Property/PFM406910



1. MONEY LAUNDERING REGULATIONS Intending purchasers will be asked to produce identification documentation at a later stage and we would ask for your co-operation in order that there will be no delay in agreeing the sale. 2. These particulars do not constitute part or all of an offer or contract. 3. The measurements indicated are supplied for guidance only and as such must be considered incorrect. Potential buyers are advised to recheck measurements before committing to any expense. 4. We have not tested any apparatus, equipment, fixtures, fittings or services and it is in the buyers interest to check the working condition of any appliances.

Connells Residential is registered in England and Wales under company number 1489613, Registered Office is Cumbria House, 16-20 Hockliffe Street, Leighton Buzzard, Bedfordshire, LU7 1GN. VAT Registration Number is 500 2481 05.

see all our properties at www.connells.co.uk | www.rightmove.co.uk | www.zoopla.co.uk