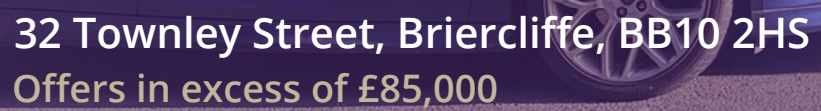


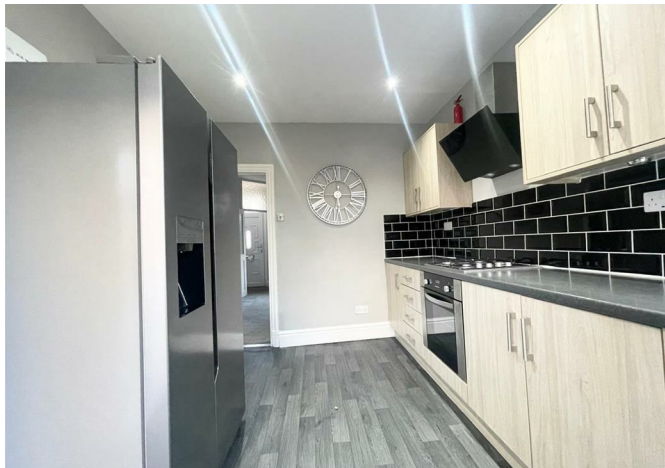


**E&M**  
PROPERTY SOLUTIONS



32 Townley Street, Briercliffe, BB10 2HS  
Offers in excess of £85,000





## 32 Townley Street, Briercliffe, BB10 2HS

**Offers in excess of £85,000**

Nestled in the charming village of Briercliffe, this delightful mid-terrace house on Townley Street presents an excellent opportunity for first-time buyers or investors alike. Spanning a comfortable 786 square feet, the property boasts two well-proportioned bedrooms, making it ideal for small families.

Situated in a quiet village, this property benefits from a peaceful environment while still being within easy reach of local amenities and schools. The community feel of Briercliffe adds to the charm, making it an attractive place to call home.

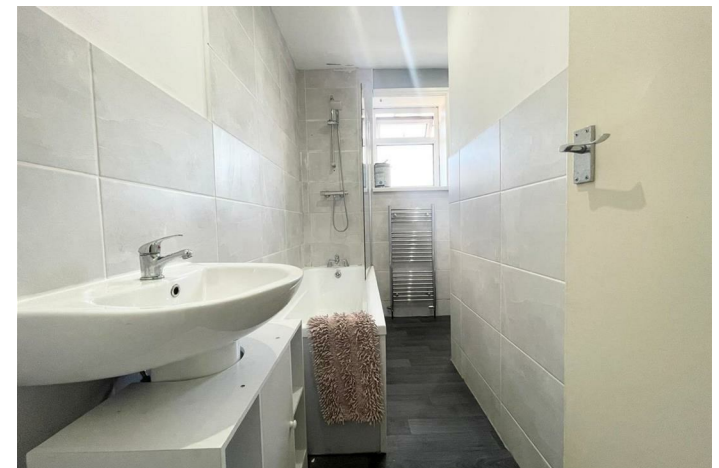
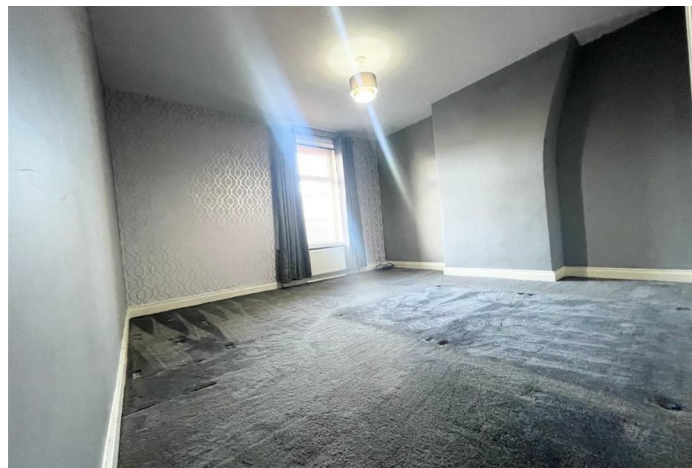
In summary, this mid-terrace house on Townley Street offers a wonderful blend of comfort, convenience, and potential. Whether you are looking to make your first step onto the property ladder or seeking a sound investment, this home is certainly worth considering.



## Description



## Situation



null  
Council Tax Band: A  
Available:

Floor Plans

Area Map



Energy Performance Graph

