

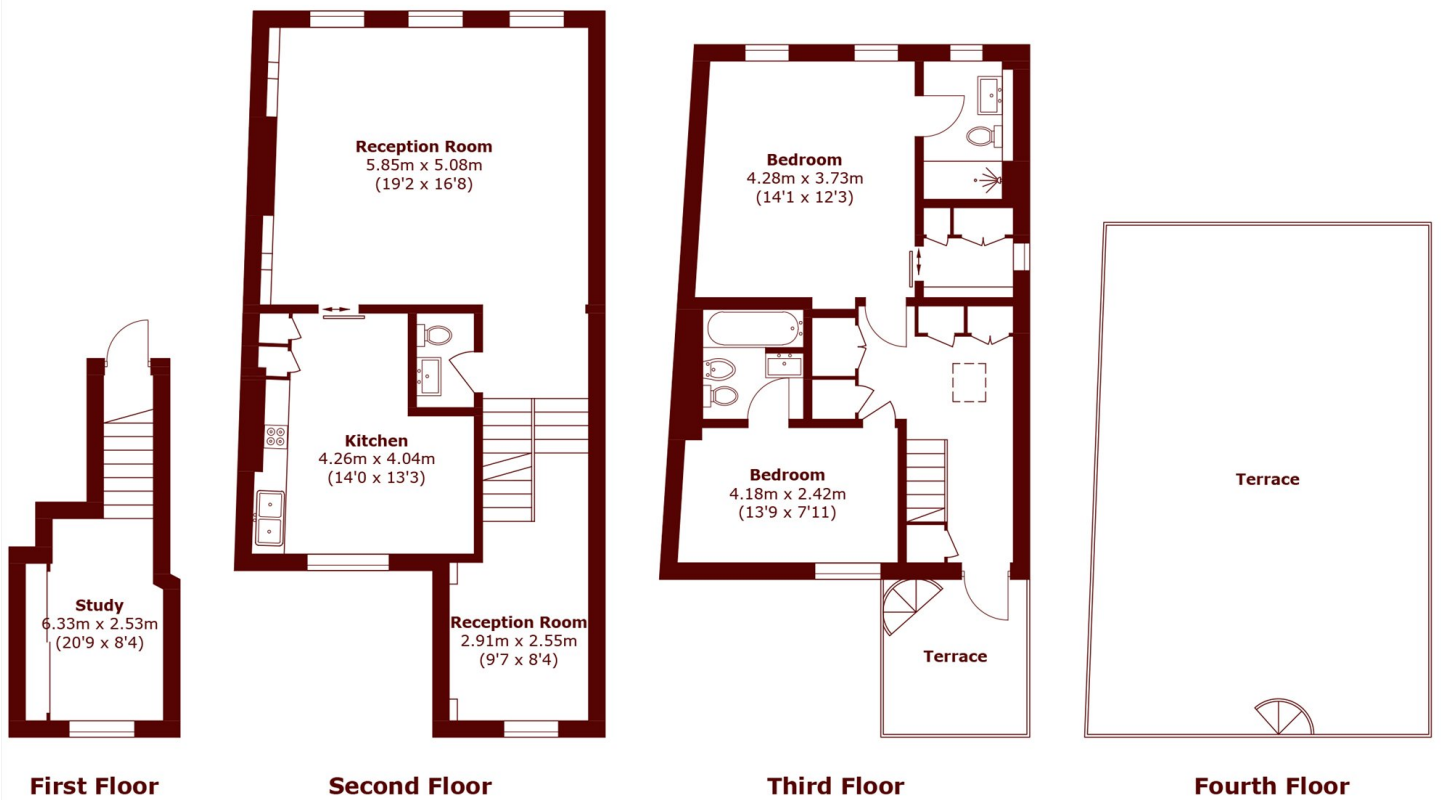


Powis Gardens, W11

£1,400 per week (£6,066 pcm)



- Maisonette
- High Ceilings
- Wooden Flooring
- Two Bedroom
- Roof Terrace
- Close to Hyde Park



Total area (approx.): 130.9 sq. m (1,409.0 sq. ft)
Terrace: 64.1 sq. m (690.0 sq. ft)

Marsh & Parsons Notting Hill

2-6 Kensington Park Road,
London, W11 3BU
020 7313 2890

We aim to make our particulars both accurate and reliable. However, they are not guaranteed; nor do they form part of an offer or contract. If you require clarification on any points then please contact us, especially if you're traveling some distance to view. Please note that appliances and heating systems have not been tested and therefore no warranties can be given as to their good working order.