



19 Stratford Road, Honeybourne

Guide Price **£600,000**





19 Stratford Road

Honeybourne, Evesham

Council Tax band: F

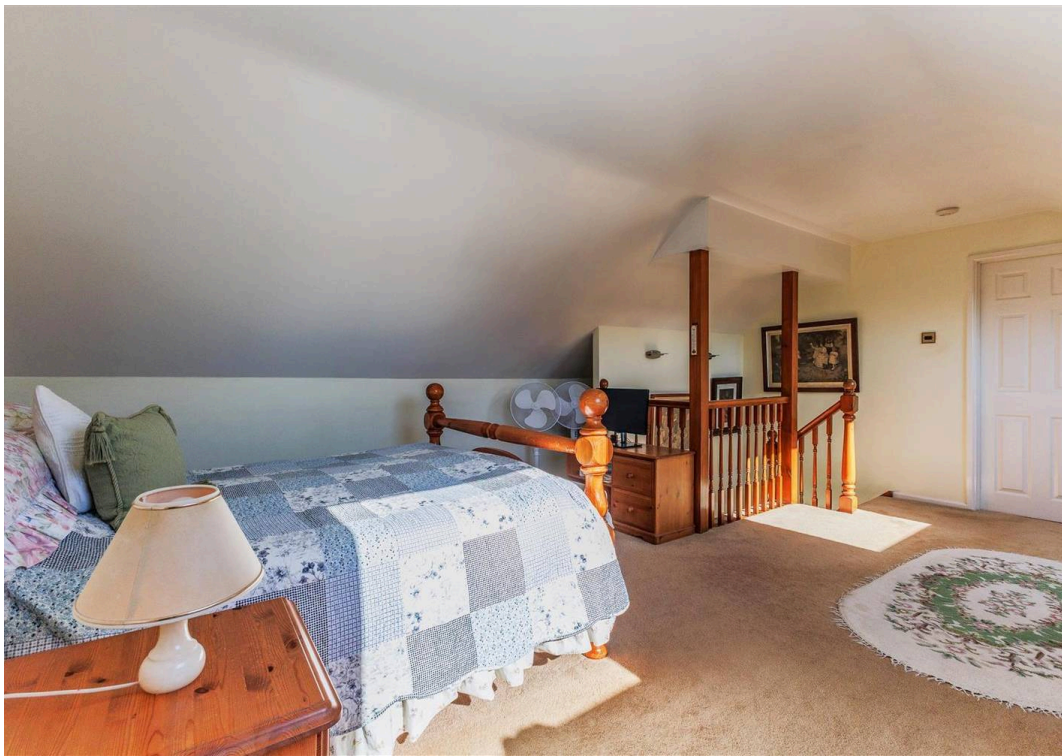
Tenure: Freehold

EPC Energy Efficiency Rating: D

EPC Environmental Impact Rating: D

- DETACHED THREE-BEDROOM HOME
- STUNNING VIEWS TOWARDS BROADWAY TOWER & COTSWOLDS
- BLOCK-PAVED DRIVEWAY WITH ELECTRIC GATES & AMPLE PARKING
- SPACIOUS LOUNGE WITH WOOD BURNER & SEPARATE SNUG
- CONSERVATORY OVERLOOKING LOW-MAINTENANCE GARDEN
- FITTED KITCHEN, DINING ROOM & UTILITY ROOM
- GENEROUS FIRST-FLOOR BEDROOM WITH EN-SUITE & DRESSING AREA
- POTENTIAL TO CREATE FOURTH BEDROOM (STPP)
- SWIMMING POOL, OUTBUILDINGS & DOUBLE GARAGE WITH POWER
- EPC RATING = D



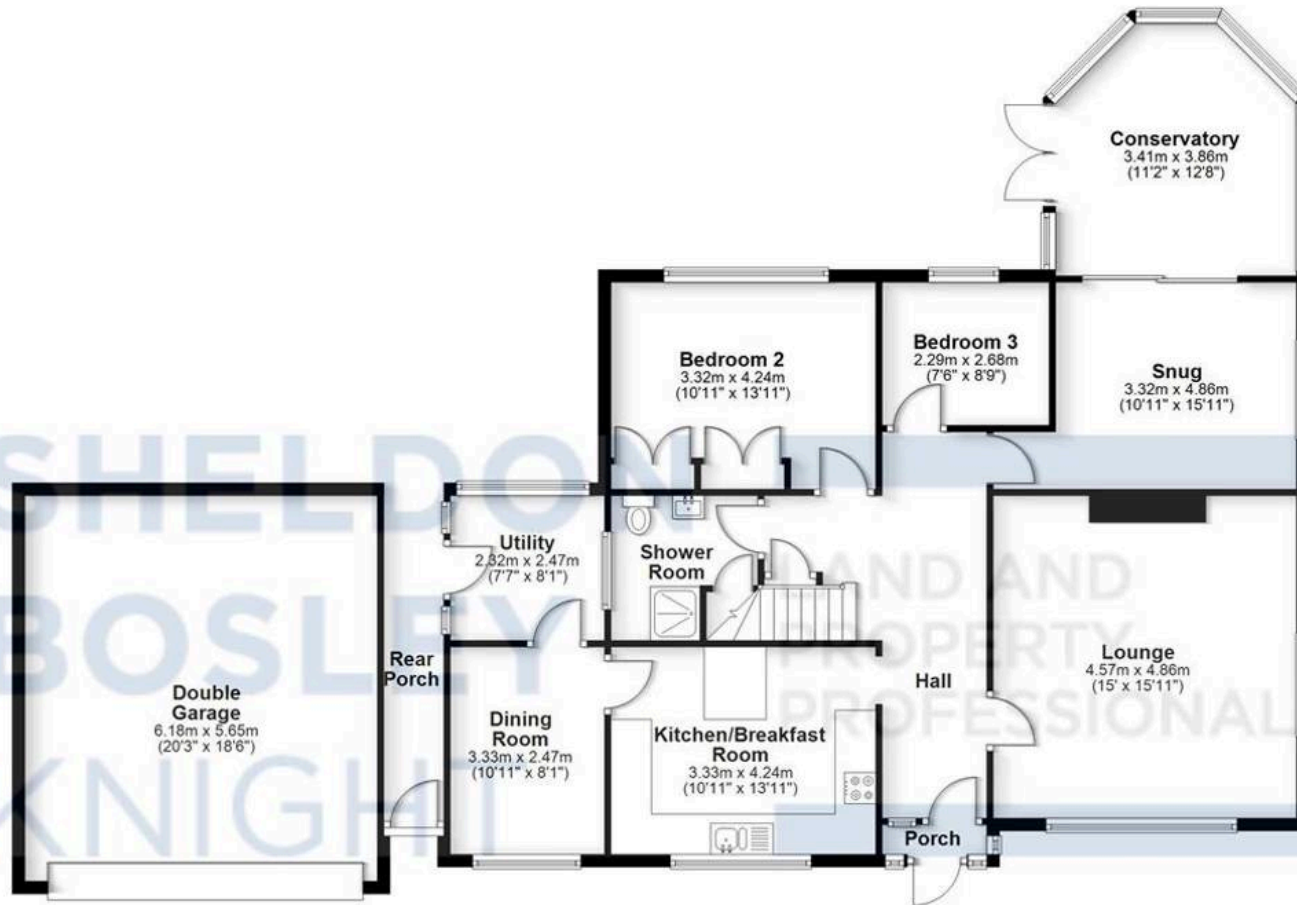






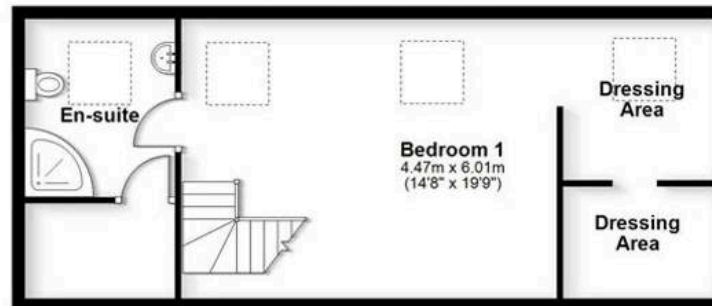
Ground Floor

Approx. 165.8 sq. metres (1785.1 sq. feet)



First Floor

Approx. 49.5 sq. metres (533.1 sq. feet)



Total area: approx. 215.4 sq. metres (2318.2 sq. feet)

All efforts have been made to ensure the measurements are accurate on this floor plan, however these are for guidance purposes only.
Plan produced using PlanUp.



Sheldon Bosley Knight Evesham & Pershore

Sheldon Bosley Knight, 1 Bridge Street, Evesham - WR11 4SQ

01386444900 · eveshamsales@sheldonbosleyknight.co.uk · www.sheldonbosleyknight.co.uk/

DISCLAIMER

All fixtures and fittings mentioned in these particulars are included in the sale, all others in the property are specifically excluded.

Photographs are reproduced for general information and it must not be inferred that any item is included for sale with the property.

These particulars are thought to be materially correct. Their accuracy is not guaranteed and they do not form part of any contract.