



GASKARTH ROAD, SW12

£4,250 per month

This stunning three bedroom Victorian family home boasts a wealth of living space arranged over three floors.

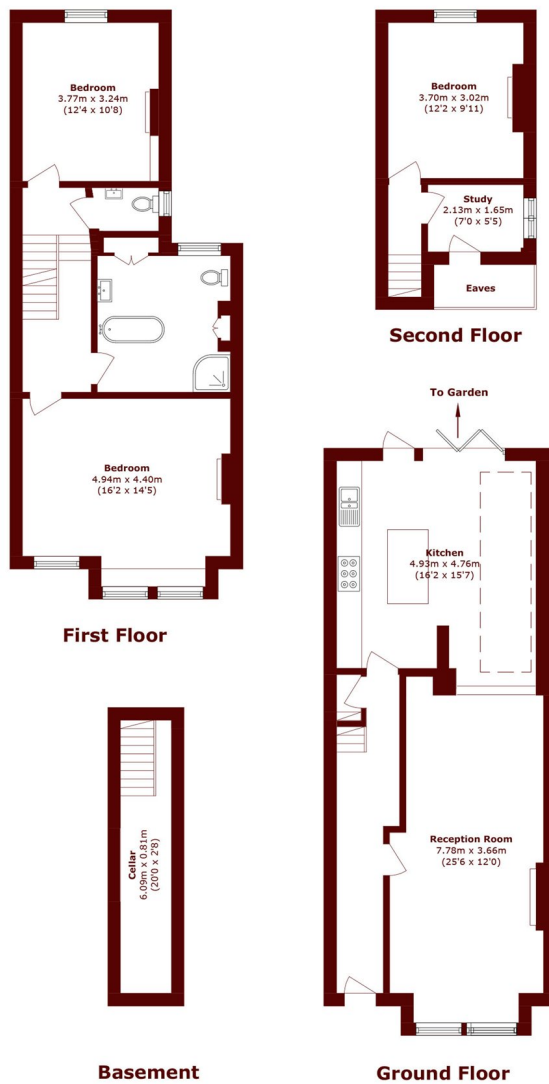
Three bedrooms
Double reception
Bi-fold doors

Three storey
Extended kitchen
Energy rating: d.

@marshandparsons
marshandparsons.co.uk

MARSH &
PARSONS

STEP INSIDE GASKARTH ROAD



Total area (approx.): 145.2 sq. m (1562.9 sq. ft)
(Excluding Eaves)

Balham & Clapham South
020 8772 9200

Energy Rating: D We aim to make our particulars both accurate and reliable. However, they are not guaranteed; nor do they form part of an offer or contract. If you require clarification on any points then please contact us, especially if you're traveling some distance to view. Please note that appliances and heating systems have not been tested and therefore no warranties can be given as to their good working order

MARSH &
PARSONS