

JAMES EDWARD

Comprehensively Cared For



Seven Sisters Road

, London, N4 2ER

£525,000



Seven Sisters Road



Description

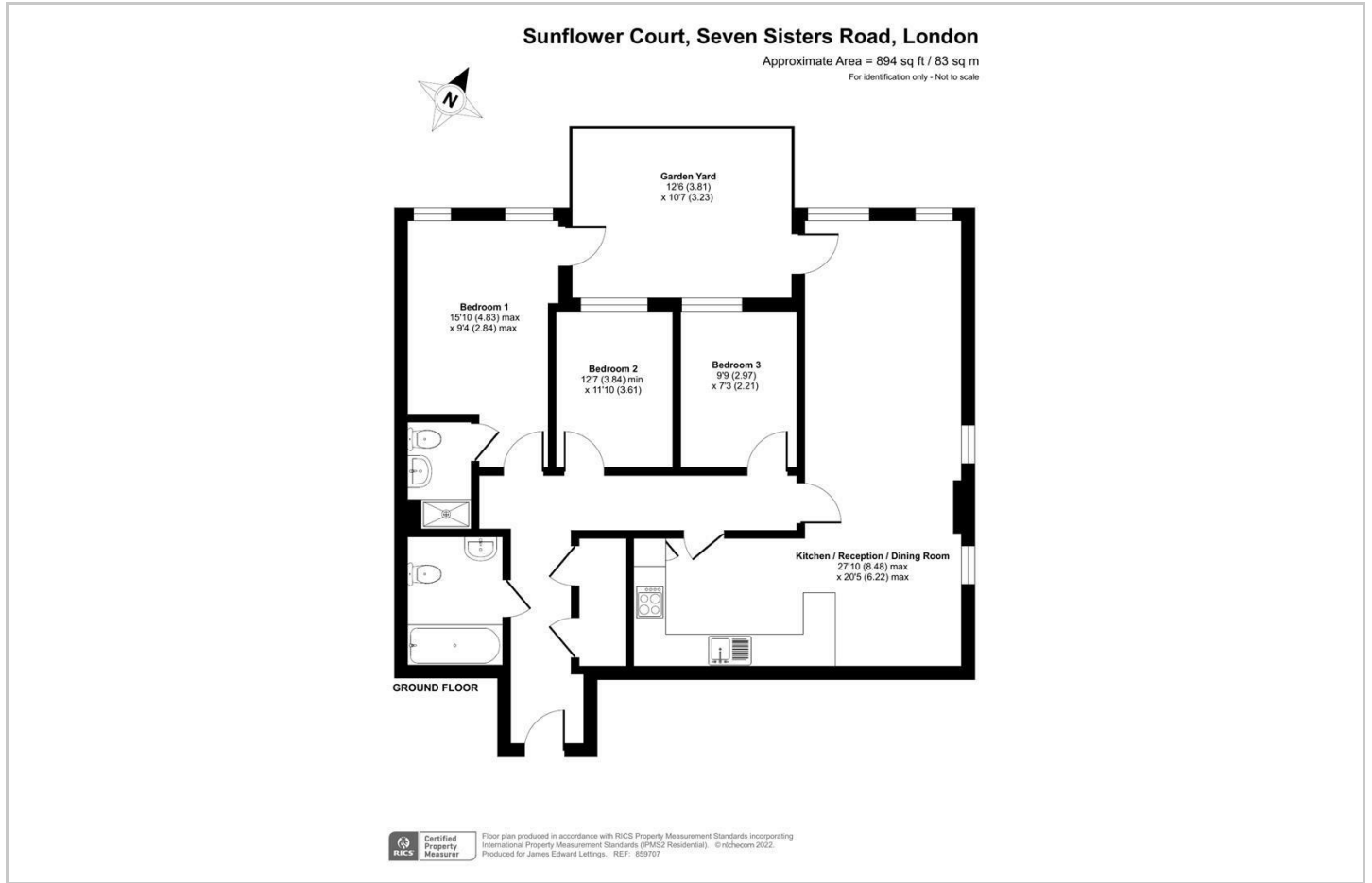
Modern spacious three bedroom, two bathroom apartment with private terrace, offering 894 sq ft of living accommodation, directly located opposite Finsbury Park itself.

- 894 sq ft
- Opposite Finsbury Park
- Two Bathrooms
- Excellent Condition
- Modern Purpose Built Development
- Three Double Bedrooms
- Private Patio
- Chain Free

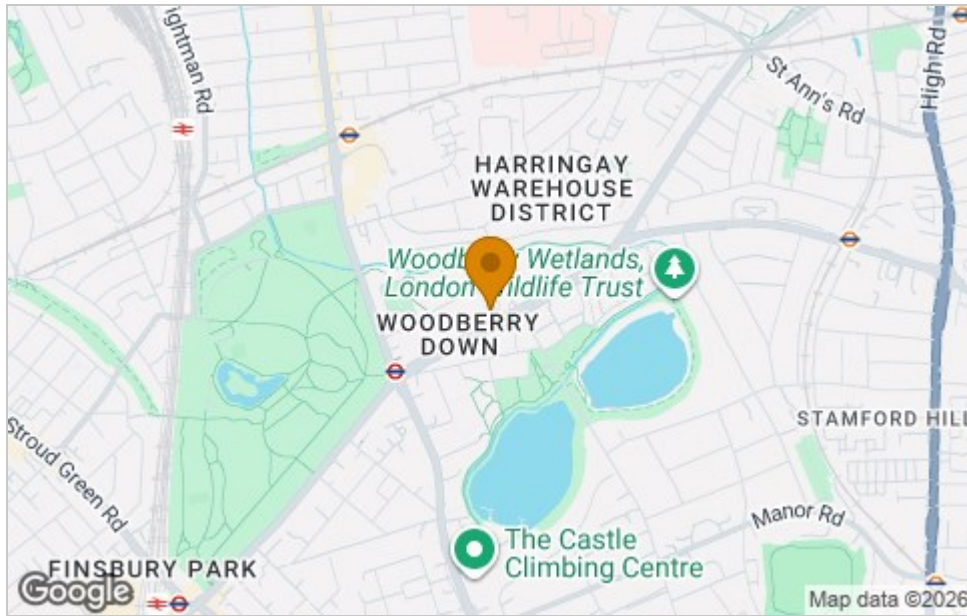




Floor Plan



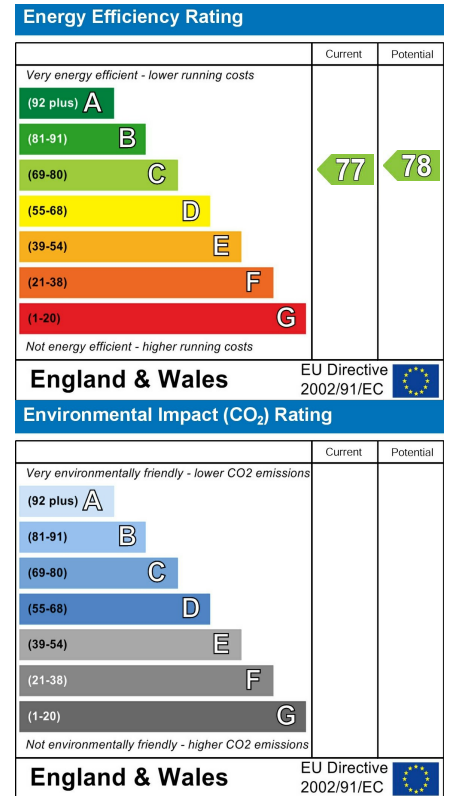
Area Map



Viewing

Please contact our James Edward Office on 020 7952 5197 if you wish to arrange a viewing appointment for this property or require further information.

Energy Efficiency Graph



These particulars, whilst believed to be accurate are set out as a general outline only for guidance and do not constitute any part of an offer or contract. Intending purchasers should not rely on them as statements of representation of fact, but must satisfy themselves by inspection or otherwise as to their accuracy. No person in this firm's employment has the authority to make or give any representation or warranty in respect of the property.