



Hawthorn Avenue, Deers Court, Three Legged Cross, Wimborne, Dorset, BH21 6FP

£175,500

🛏️ 2 🚿 2 🚗 1



- Detached Park Home Bungalow
- Two Double Bedrooms
- Ensuite To Master Bedroom
- Gated, Residential Park
- Spacious, Dual Aspect Lounge
- Edge Of Park Location
- Driveway To The Side
- End Of Chain Sale
- Kitchen With Integrated Appliances
- No Stamp Duty To Pay!

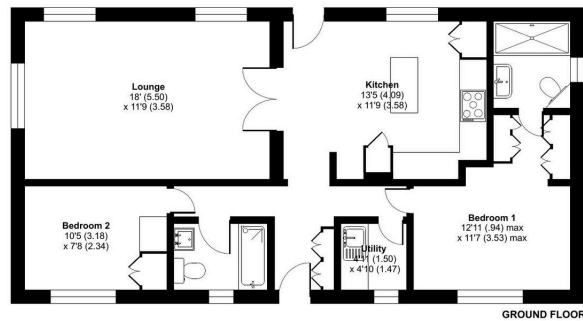


A well presented two double bedroom park home bungalow (40'x20') located on the edge of this sought after gated residential park for the over 45's near the South Coast in Dorset. This 'Lyndale' design is popular with buyers as it combines modern living with a luxury finish. There is a dual aspect lounge, a spacious kitchen/dining room with integrated appliances, a useful utility room, a master bedroom with a walk-through wardrobe area and ensuite shower room, a second double bedroom with built in wardrobes, a further guest bathroom as well as garden areas to all sides of the home and a block paved driveway to the side. This superb home is priced competitively and is offered with no onward chain.



Hawthorn Avenue, Deers Court, Three Legged Cross, Wimborne, BH21

Approximate Area = 796 sq ft / 74 sq m
For identification only - Not to scale



Floor plan produced in accordance with RICS Property Measurement 2nd Edition, incorporating International Property Measurement Standards (IPMS2 Residential). © richrecom 2025. Produced for The Park Home Agency Ltd. REF: 1340381



01793 230185

sales@theparkhomeagency.co.uk

Agents Notes: All measurements are approximate and quoted in metric with imperial equivalents and for general guidance only and whilst every attempt has been made to ensure accuracy, they must not be relied on. The fixtures, fittings and appliances referred to have not been tested and therefore no guarantee can be given that they are in working order. Internal photographs are reproduced for general information and it must not be inferred that any item shown is included with the property. For a free valuation, contact the numbers listed on the brochure