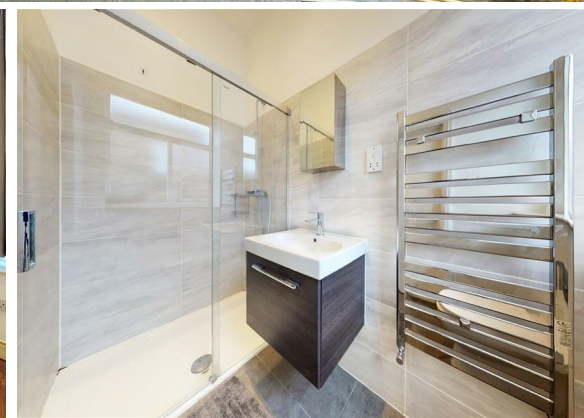




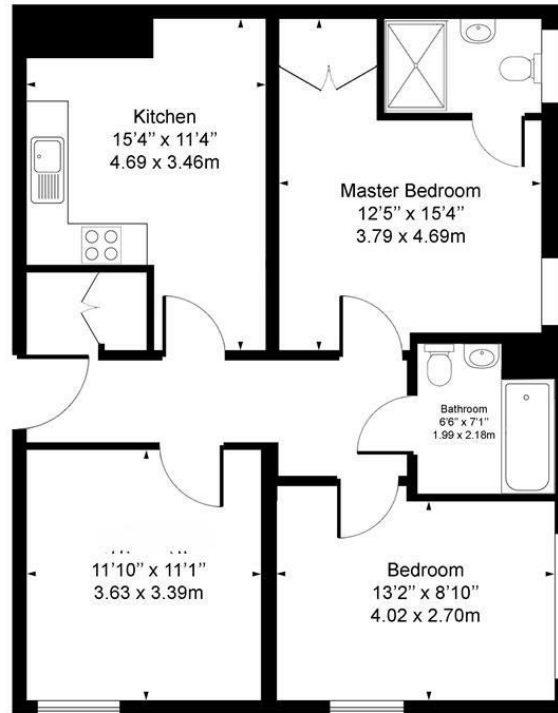
**2 Bed  
Apartment  
located in Nine  
Elms**

£2,400 PCM



# Wadsworth Road, SW8

Approx. Gross Internal Area 783.72 sq ft / 72.81 sq m



Ground Floor

For Illustration Purposes Only - Not To Scale

This floor plan should be used as a general outline for guidance only and does not constitute in whole or in part an offer or contract. Any intending purchaser or lessee should satisfy themselves by inspection, search, enquiries and full survey as to the correctness of each statement. Any areas, measurements or distances quoted are approximate and should not be used to value a property or be the basis of any sale or let.

## DIRECTIONS

### CONTACT

1-3 Old Town  
Clapham  
London  
SW4 0JT

E: [lettings@orlandoreid.co.uk](mailto:lettings@orlandoreid.co.uk)  
T: 020 7627 3197  
[www.orlandoreid.co.uk](http://www.orlandoreid.co.uk)

Energy Efficiency Rating		
	Current	Potential
Very energy efficient - lower running costs		
(92 plus) <b>A</b>		
(81-91) <b>B</b>		
(69-80) <b>C</b>		
(55-68) <b>D</b>		
(39-54) <b>E</b>		
(21-38) <b>F</b>		
(1-20) <b>G</b>		
Not energy efficient - higher running costs		
<b>England &amp; Wales</b>	EU Directive 2002/91/EC	

