



WHITES

Flat 3, Osborne House Victoria Road, Salisbury, Wiltshire, SP1 3NQ

£850 PCM

About The Property

Whites are proud to present this charming first-floor flat, ideally situated on Victoria Road, offering spacious living accommodation and convenient access to the city centre.

Accommodation comprises:

A generously sized living room with large windows allowing plenty of natural light and ventilation, leading through to the kitchen.

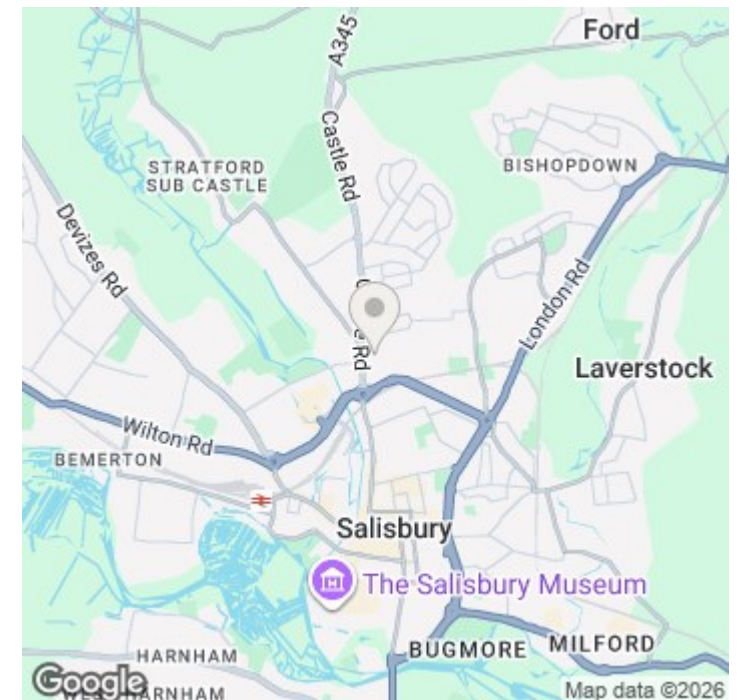
The kitchen is fitted with an electric oven and solid plate hob, with space and plumbing for a washing machine and fridge. A built-in pantry provides excellent additional storage.

Along the hallway, you will find a well-proportioned bedroom complete with a walk in wardrobe. Modern bathroom with shower over the bath.

Available unfurnished, the property benefits from an EPC rating of C.



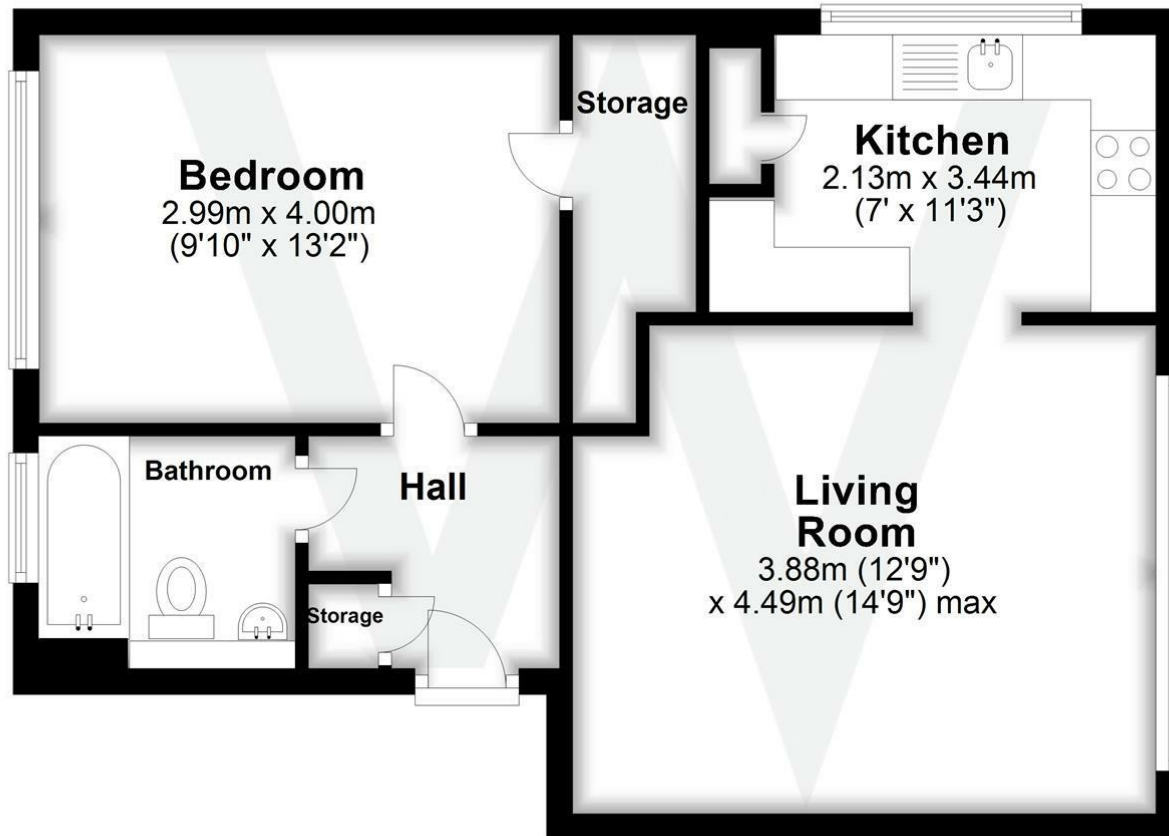
- First floor flat
- Walking distance to the city centre
- Light and spacious living room
- Kitchen with cooker and pantry cupboard
- Double bedroom with walk in wardrobe
- Modern bathroom with shower over bath
- Gas central heating
- UPVC double glazing
- EPC rating band C
- Good transport links





First Floor

Approx. 48.0 sq. metres (517.0 sq. feet)



Total area: approx. 48.0 sq. metres (517.0 sq. feet)

Further Information

Let available date: 1st March 2026
 NB: This date is provisional and will only be confirmed once referencing has been successfully completed.

Property type: Flat

Furnish type: Unfurnished

Deposit: £980

Local authority: Wiltshire

Council Tax: Band A

EPC: C(76)

Energy Efficiency Rating

	Current	Potential
Very energy efficient - lower running costs		
(92 plus) A		
(81-91) B		
(69-80) C	76	76
(55-68) D		
(39-54) E		
(21-38) F		
(1-20) G		
Not energy efficient - higher running costs		
England & Wales	EU Directive 2002/91/EC 