



**17 Weavers Road**  
Darley Dale, Matlock, DE4 2FU  
£440,000

 4  3  2  B

## 17 Weavers Road

Darley Dale, Matlock, DE4 2FU

Situated in the convenient location of Darley Dale, is this generously proportioned 4 bedroom detached property. Boasting 1162 sqft of bright and spacious living accommodation, the property features a beautifully presented rear garden, off street parking and a single garage.

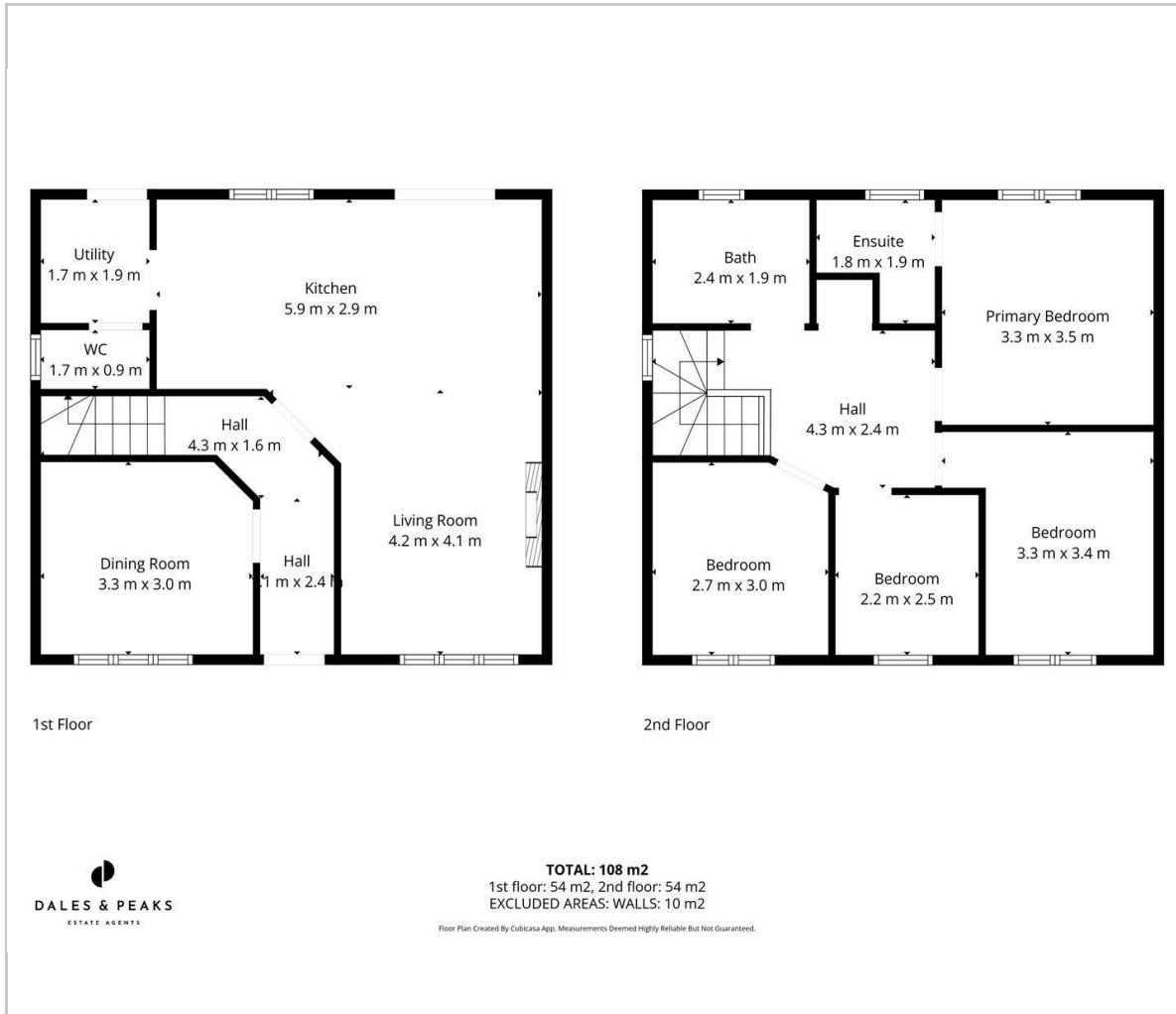
The ground floor comprises; Entrance hallway, formal dining room/snug, open plan living space featuring a living area with media wall and electric fire, dining island kitchen with granite worktops, integrated appliances and access onto the rear garden. Separate utility room and downstairs WC.

The first floor comprises; Spacious landing space, Master bedroom with ensuite shower room, 2 further double bedrooms, main family bathroom and a single bedroom.

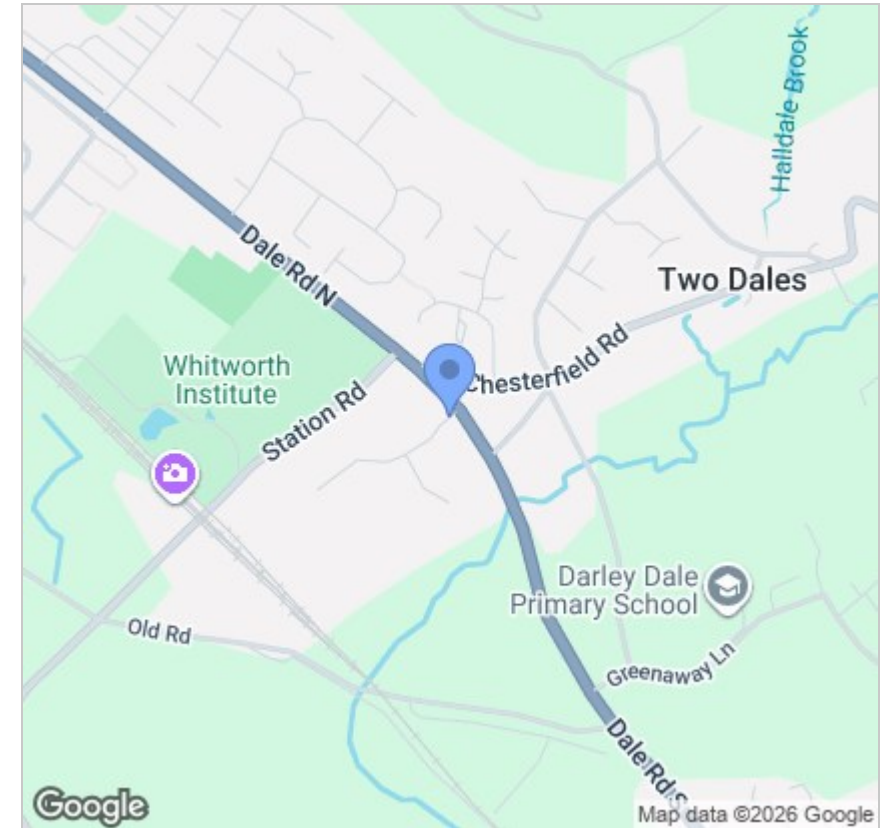




## Floor Plan



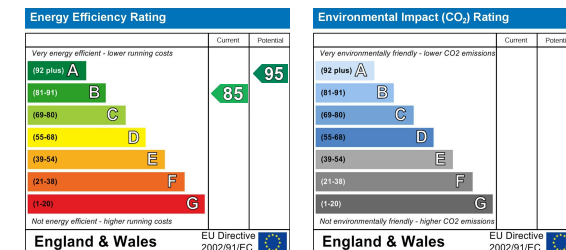
## Area Map



## Viewing

Please contact our Chesterfield Office on 01246 567540 if you wish to arrange a viewing appointment for this property or require further information.

## Energy Efficiency Graph



These particulars, whilst believed to be accurate are set out as a general outline only for guidance and do not constitute any part of an offer or contract. Intending purchasers should not rely on them as statements of representation of fact, but must satisfy themselves by inspection or otherwise as to their accuracy. No person in this firm's employment has the authority to make or give any representation or warranty in respect of the property.



131 Chatsworth Road, Chesterfield, Derbyshire, S40 2AP  
 T: 01246 567540

E: info@dalesandpeaks.co.uk  
 www.dalesandpeaks.co.uk