

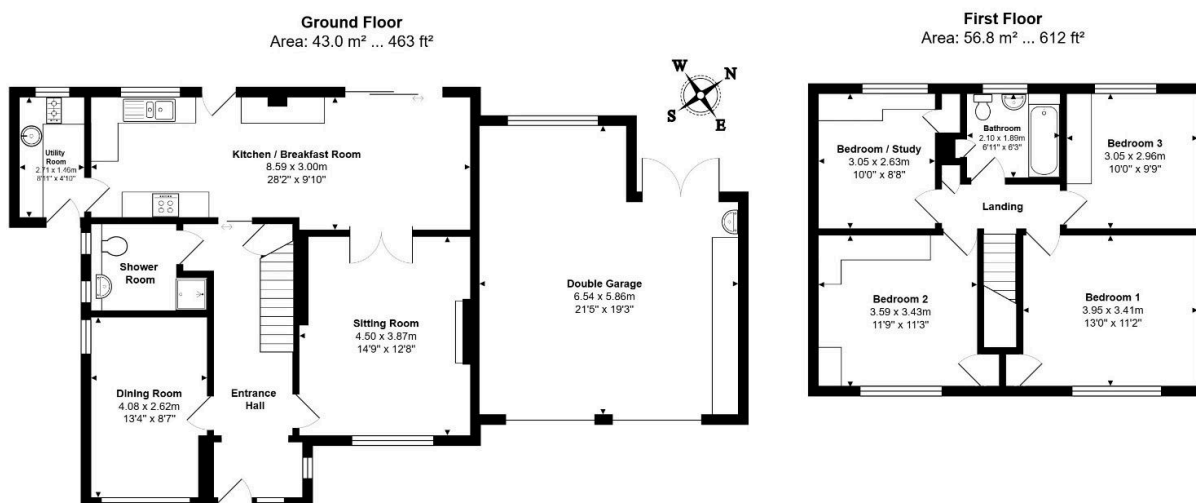
Priory Road, Needingworth, St. Ives, PE27 4SD

Offers Over £450,000

4 2 3



- Four-bedroom detached home on a corner plot.
- Generous kitchen and breakfast room with utility room.
- Flexible bedroom/study for working from home.
- Double garage for cars, storage, or both.
- Virtual tour available upon request
- Beautifully landscaped garden overlooking open fields.
- Spacious master bedroom with room to breathe.
- Ground floor shower room for added convenience.
- Lovely village setting with easy access to St Ives.
- EPC Rating C/72



Total Area: 133.7 m² ... 1439 ft² (excluding double garage)

All measurements are approximate and for display purposes only

A gorgeous corner-plot four-bed in Needingworth with a garden that'll make your neighbours green with envy.