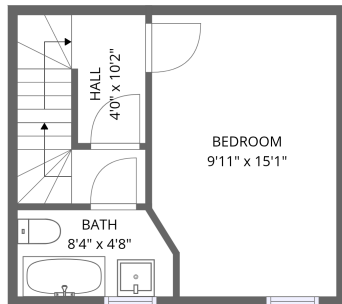
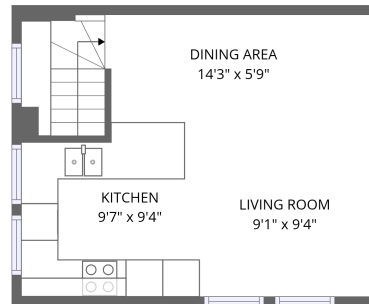


Home report

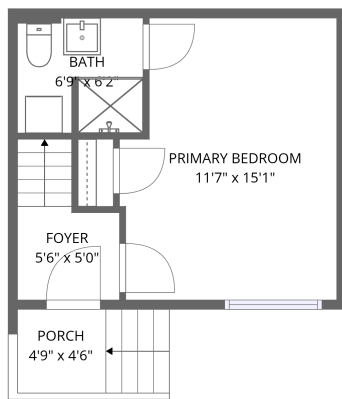
# Forstal Road, Aylesford, England, United Kingdom



1st floor



2nd floor



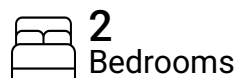
Ground floor

**Total Area: 801 sq. ft**

Ground Floor: 259 sq. ft, 1st Floor: 259 sq. ft, 2nd Floor: 283 sq. ft

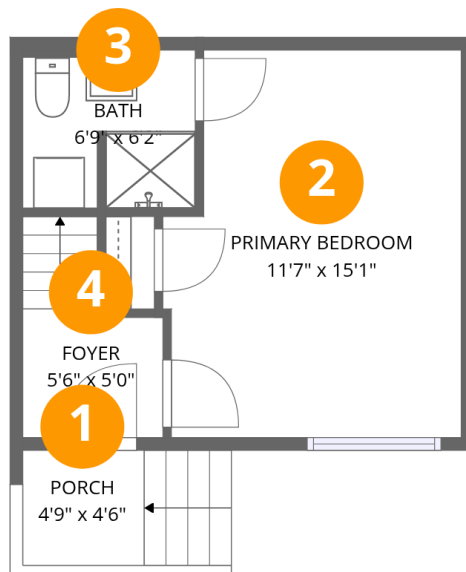
Excluded: Porch 37 sq. ft, Walls: 88 sq. ft

## Property summary



Home report

# Forstal Road,Aylesford,England,United Kingdom



## Room dimensions

Floor 1

Total:259sqft Excluded: 37sqft

#		Dimensions	sqft	Counted as living area
1	Porch	4'9" x 4'6"	21 sq. ft	No
2	Primary Bedroom	11'7" x 15'1"	175 sq. ft	Yes
3	Bath	6'9" x 6'2"	41 sq. ft	Yes
4	Foyer	5'6" x 5'0"	27 sq. ft	Yes

Home report

Forstal Road,Aylesford,England,United Kingdom

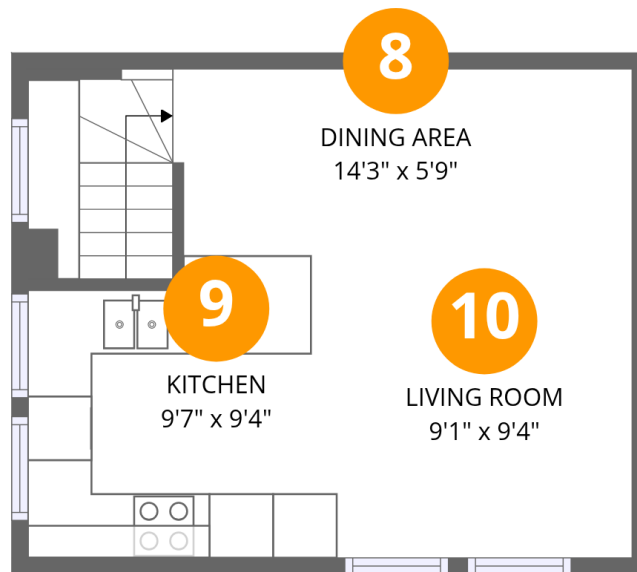


## Room dimensions

Floor 2

Total:259sqft Excluded: 0sqft

#		Dimensions	sqft	Counted as living area
5	Hall	4'0" x 10'2"	40 sq. ft	Yes
6	Bath	8'4" x 4'8"	39 sq. ft	Yes
7	Bedroom	9'11" x 15'1"	149 sq. ft	Yes



## Room dimensions

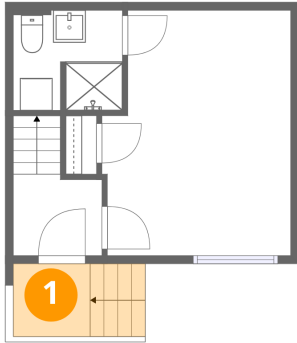
Floor 3

Total:283sqft

Excluded: 0sqft

#		Dimensions	sqft	Counted as living area
8	Dining Area	14'3" x 5'9"	82 sq. ft	Yes
9	Kitchen	9'7" x 9'4"	89 sq. ft	Yes
10	Living Room	9'1" x 9'4"	85 sq. ft	Yes

## 1 Floor 1 - Porch



Dimensions: 4'9" x 4'6"  
Area: 21 sq. ft  
Counted as living area: No

Heated: No  
Finished: No  
Enclosed: No  
Contiguous: Yes  
Permitted: Yes  
Wet space: No  
Addition: No  
Conversion: No

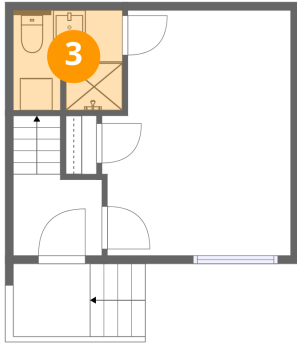
## 2 Floor 1 - Primary Bedroom



Dimensions: 11'7" x 15'1"  
Area: 175 sq. ft  
Counted as living area: Yes

Heated: Yes  
Finished: Yes  
Enclosed: Yes  
Contiguous: Yes  
Permitted: Yes  
Wet space: No  
Addition: No  
Conversion: No

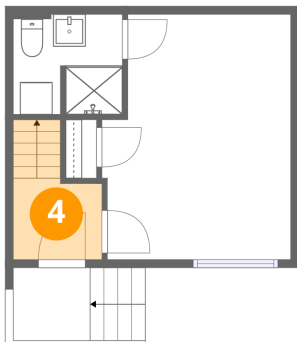
### 3 Floor 1 - Bath



Dimensions: 6'9" x 6'2"  
Area: 41 sq. ft  
Counted as living area: Yes

Heated: Yes  
Finished: Yes  
Enclosed: Yes  
Contiguous: Yes  
Permitted: Yes  
Wet space: Yes  
Addition: No  
Conversion: No

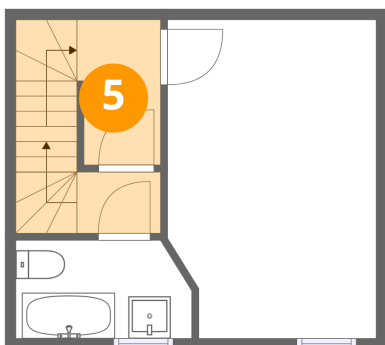
### 4 Floor 1 - Foyer



Dimensions: 5'6" x 5'0"  
Area: 27 sq. ft  
Counted as living area: Yes

Heated: Yes  
Finished: Yes  
Enclosed: Yes  
Contiguous: Yes  
Permitted: Yes  
Wet space: No  
Addition: No  
Conversion: No

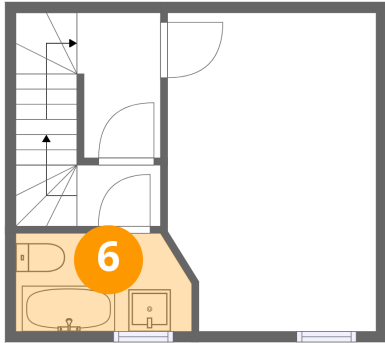
### 5 Floor 2 - Hall



Dimensions: 4'0" x 10'2"  
Area: 40 sq. ft  
Counted as living area: Yes

Heated: Yes  
Finished: Yes  
Enclosed: Yes  
Contiguous: Yes  
Permitted: Yes  
Wet space: No  
Addition: No  
Conversion: No

## 6 Floor 2 - Bath



Dimensions: 8'4" x 4'8"  
Area: 39 sq. ft  
Counted as living area: Yes

Heated: Yes  
Finished: Yes  
Enclosed: Yes  
Contiguous: Yes  
Permitted: Yes  
Wet space: Yes  
Addition: No  
Conversion: No

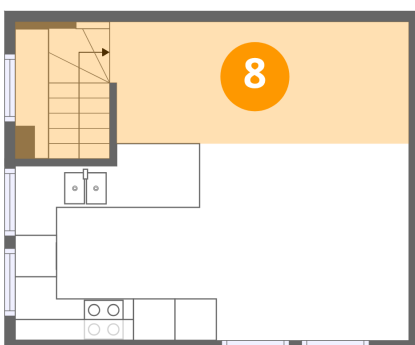
## 7 Floor 2 - Bedroom



Dimensions: 9'11" x 15'1"  
Area: 149 sq. ft  
Counted as living area: Yes

Heated: Yes  
Finished: Yes  
Enclosed: Yes  
Contiguous: Yes  
Permitted: Yes  
Wet space: No  
Addition: No  
Conversion: No

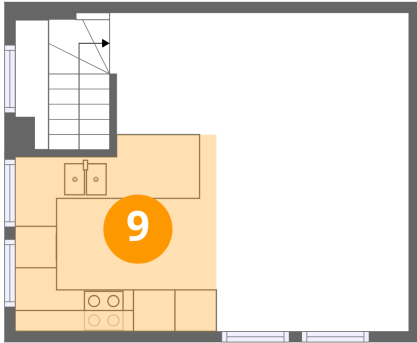
## 8 Floor 3 - Dining Area



Dimensions: 14'3" x 5'9"  
Area: 82 sq. ft  
Counted as living area: Yes

Heated: Yes  
Finished: Yes  
Enclosed: Yes  
Contiguous: Yes  
Permitted: Yes  
Wet space: No  
Addition: No  
Conversion: No

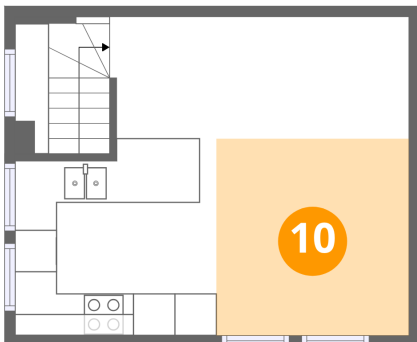
**9** Floor 3 - Kitchen



Dimensions: 9'7" x 9'4"  
Area: 89 sq. ft  
Counted as living area: Yes

Heated: Yes  
Finished: Yes  
Enclosed: Yes  
Contiguous: Yes  
Permitted: Yes  
Wet space: No  
Addition: No  
Conversion: No

**10** Floor 3 - Living Room



Dimensions: 9'1" x 9'4"  
Area: 85 sq. ft  
Counted as living area: Yes

Heated: Yes  
Finished: Yes  
Enclosed: Yes  
Contiguous: Yes  
Permitted: Yes  
Wet space: No  
Addition: No  
Conversion: No