

for sale

£290,000



## The Green Brafield On The Green Northampton NN7 1BB

A charming stone-built detached cottage, beautifully situated in the rural village of Brafield-on-the-Green.

# The Green Brafield On The Green Northampton NN7 1BB

## Lounge

Door to front elevation. Two windows to the front and one to the rear aspect. Stairs rising to bedroom. Understairs storage. Beamed ceiling. Log burn fireplace. Radiator. Stone floor.

## Dining Room

Window to the side elevation. Door to conservatory. Radiator. Stone floor.

## Cloakroom

Suite comprising wc and wash hand basin with tiling to splashback area. Window to the side elevation. Spotlights. Radiator.

## Kitchen

Fitted with a range of wall and base level units. Ceramic sink and drainer set beneath the work surface. Integrated appliances comprising dishwasher, oven, grill and gas hob with a cooker hood over. Plumbing for washing machine. Space for upright fridge freezer. Spotlights. Central heating boiler. Two windows to the side elevation. Patio doors opening to the rear garden. Stone floor.

## Conservatory

UPVC construction. Door to dining room.

## Bedroom

Stairs rising from lounge. Two windows to the front elevation. Radiator. Exposed beams. Stairs connecting to bathroom.

## Bathroom

Suite comprising free standing bath with shower attachment and mixer taps, double shower cubicle, w.c and wash hand basin. Extractor fan. Radiator. Spotlights.

## Rear Garden

Pebbled garden. Side gate with access to the front of the property. Paved path leading to conservatory. Shrubs and tree.

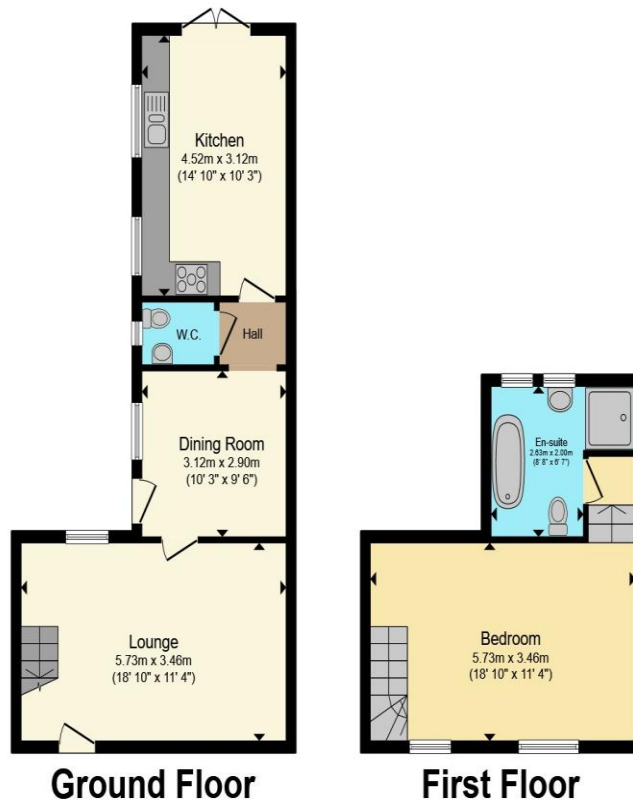
## Agent Notes

Please be aware that the information we have about this property is limited. If there is any point which is of particular importance to you, please contact the branch and we

will endeavour to check for you, especially if you are contemplating travelling some distance to view the property.







Total floor area 75.8 m<sup>2</sup> (816 sq.ft.) approx

This floor plan is for illustrative purposes only. It is not drawn to scale. Any measurements, floor areas (including any total floor area), openings and orientation are approximate. No details are guaranteed, they cannot be relied upon for any purpose and they do not form part of any agreement. No liability is taken for any error, omission or misstatement. A party must rely upon its own inspection(s). Powered by www.propertybox.io



To view this property please contact Connells on

**T 01604 706644**  
**E woottonfields@connells.co.uk**

11 Tudor Court Wootton Hope Drive Wootton  
 NORTHAMPTON NN4 6FF

Property Ref: WFL408688 - 0002

Tenure:Freehold EPC Rating: E

Council Tax Band: D

**view this property online [connells.co.uk/Property/WFL408688](https://www.connells.co.uk/Property/WFL408688)**



1. MONEY LAUNDERING REGULATIONS Intending purchasers will be asked to produce identification documentation at a later stage and we would ask for your co-operation in order that there will be no delay in agreeing the sale. 2. These particulars do not constitute part or all of an offer or contract. 3. The measurements indicated are supplied for guidance only and as such must be considered incorrect. Potential buyers are advised to recheck measurements before committing to any expense. 4. We have not tested any apparatus, equipment, fixtures, fittings or services and it is in the buyers interest to check the working condition of any appliances.

Connells Residential is registered in England and Wales under company number 1489613, Registered Office is Cumbria House, 16-20 Hockliffe Street, Leighton Buzzard, Bedfordshire, LU7 1GN. VAT Registration Number is 500 2481 05.

see all our properties at [www.connells.co.uk](https://www.connells.co.uk) | [www.rightmove.co.uk](https://www.rightmove.co.uk) | [www.zoopla.co.uk](https://www.zoopla.co.uk)