

Abacot Grove, Houghton Regis, Dunstable, LU5 6GE

Offers Over £495,000

4 2 2



- Four Double Bedroom Detached
- Landscaped Front & Rear Gardens
- Ground Floor Cloakroom
- Cul-de-Sac Location
- Bespoke Putting Green
- En-Suite To Master Bedroom
- Study
- Double Garage With Storage & Driveway
- uPVC double glazing & gas central heating.
- Please Quote Reference No. MS0216

Approximate Gross Internal Area
 Ground Floor = 63.5 sq m / 683 sq ft
 First Floor = 63.2 sq m / 680 sq ft
 Garage = 22.7 sq m / 244 sq ft
 Total = 149.4 sq m / 1,607 sq ft

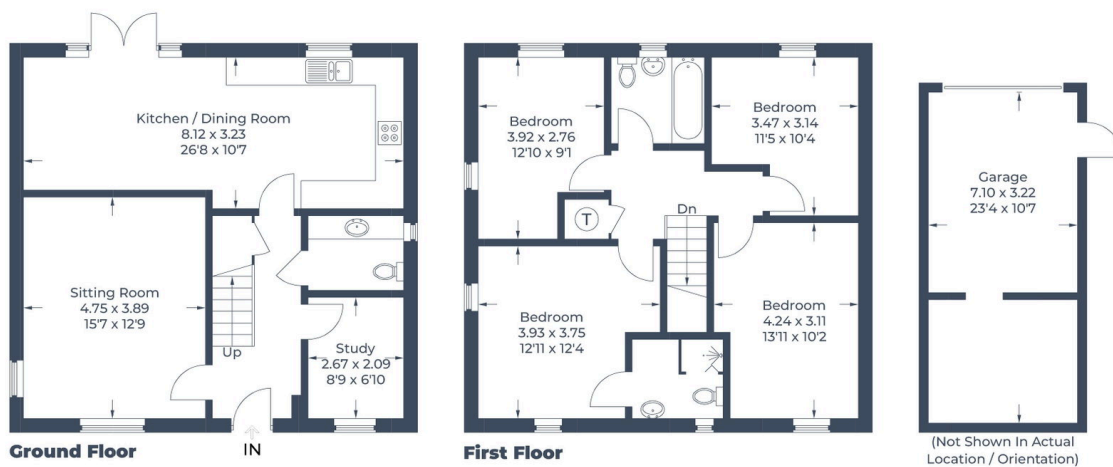


Illustration for identification purposes only,
 measurements are approximate, not to scale.
 © CJ Property Marketing Produced for Mark Summers

An immaculately presented and imposing four bedroom detached family home in Abacot Grove; a quiet modern Cul-de-Sac in the modern area of Regents Place in Bidwell, just a short drive to local countryside and villages and junction 11a of the M1.

Entrance hall, sitting room, 280 plus Sq ft kitchen/diner, study, ground floor cloakroom, four double bedrooms with en-suite to master, family bathroom. Landscaped front and rear gardens,

putting green, double garage, driveway parking for 2 cars, uPVC double glazing & gas central heating.

Please Quote Reference No. MS0216