



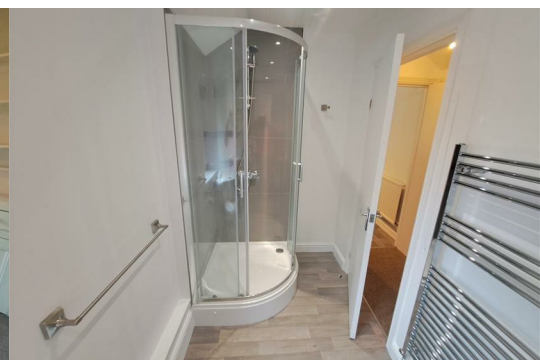
## 22 South Road

, Kingswood, BS15 8JW

**£1,025 Per Calendar Month**



PLEASE READ DO NOT PHONE If you are interested in viewing this property please send us an alert through Rightmove / Zoopla using the Email Agent/request details option on their site. We will then respond with a brief questionnaire. On receipt, we will then contact you \*\*\* Converted Ground Floor Flat With Garden\*\*\* Comprises Double Bedroom, Lounge With Feature Recess Cupboard, Refitted Kitchen With A Selection Of Wall and Base Units, Refitted Shower Room, Comes With Gardens For Your Own Use, Benefits From A Gas Central Heating System and Double Glazing. Available Straight Away. EPC RATING D.



Communal Hallway  
With further door to:

**Lounge 13'2" x 11'4" (4.02 x 3.47)**  
Double glazed window overlooking the rear gardens, built in feature recess cupboards, feature fire surround.

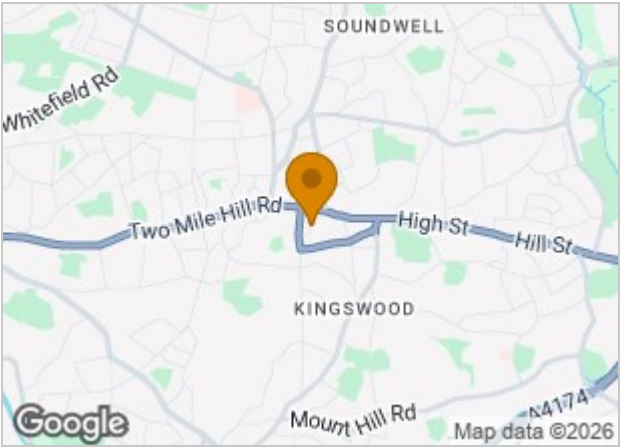
**Kitchen 8'2" x 10'11" (2.51 x 3.33)**  
Double glazed window to the side and double glazed door giving access to the garden, single drainer stainless steel sink unit with tiled splash backs, selection of wall and base units. Useful under stairs storage cupboard.

**Bedroom 12'8" max x 11'8" (3.87 max x 3.58)**  
Double glazed bay window overlooking the front, radiator.

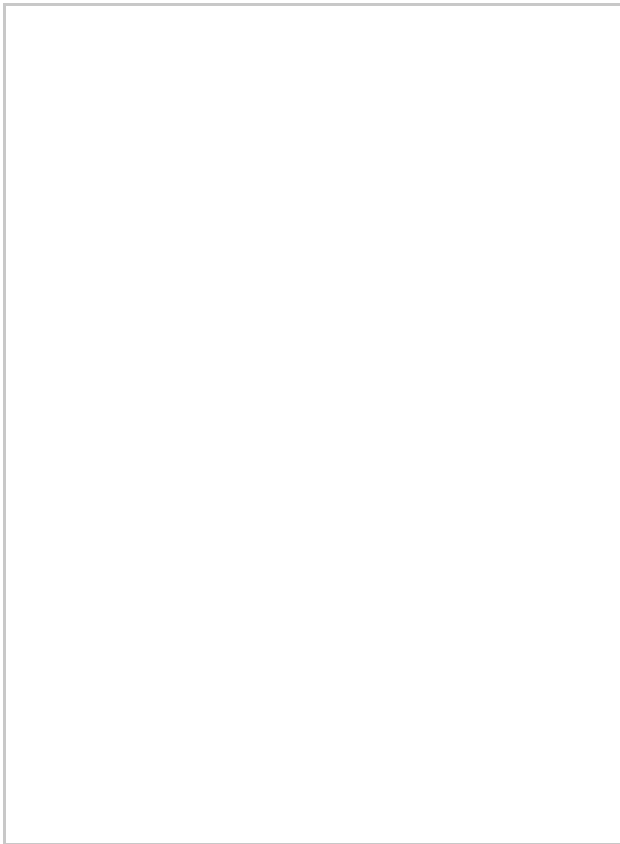
**Shower Room 5'2" x 9'4" (1.59 x 2.86)**  
Double glazed obscure window, WC, wash hand basin, Shower with mixer tap shower attachment, radiator.

**Garden**  
Rear garden

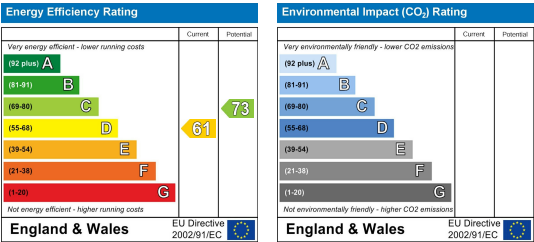
Area Map



Floor Plans



Energy Efficiency Graph



These particulars, whilst believed to be accurate are set out as a general outline only for guidance and do not constitute any part of an offer or contract. Intending purchasers should not rely on them as statements of representation of fact, but must satisfy themselves by inspection or otherwise as to their accuracy. No person in this firms employment has the authority to make or give any representation or warranty in respect of the property.