

## Chippenham Road, W9

£450,000

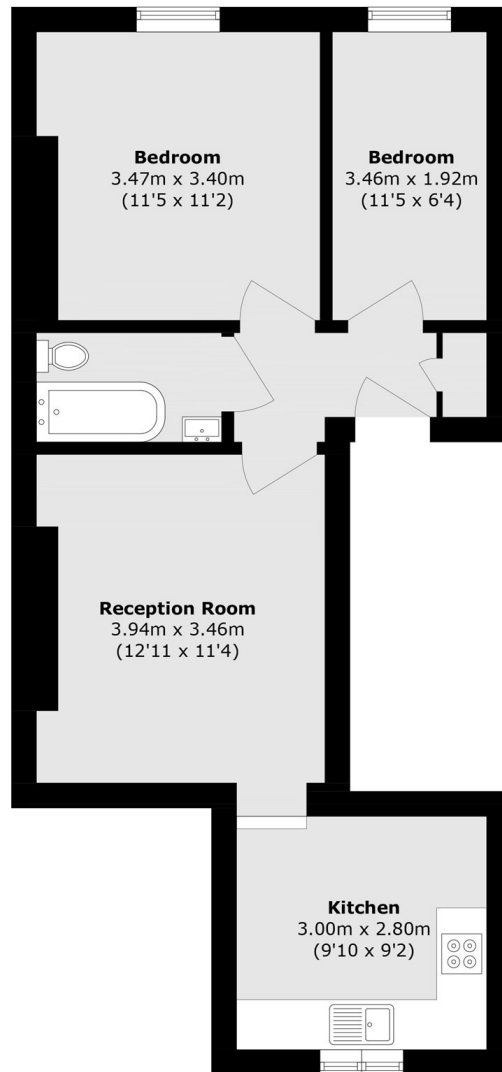
Set in a Victorian conversion, this first floor flat comes complete with two bedrooms, a reception room leading into the separate kitchen and large sash windows throughout. This property is being offered chain free.

Chippenham Road is less than half a mile from multiple transport links to central London and close to Portobello, Little Venice and Paddington Recreation Ground. A short walk takes you to the shops and local amenities along Harrow Road and Elgin Avenue.

### Features

- First Floor Flat
- Two Bedrooms
- Separate Kitchen
- Sash Windows
- Great Location
- Chain Free

# Chippenham Road, Maida Vale, W9



## First Floor

Total area (approx.): 53.3 sq. m (573.7 sq. ft)